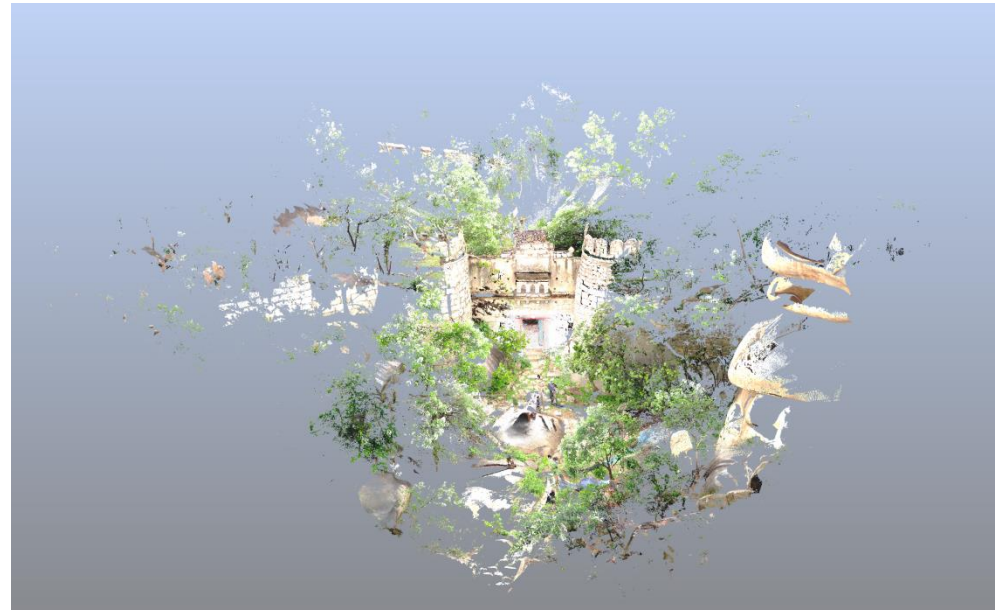


# 01. ANEGONDI FORT

## Place – Anegondi

**District** : Koppal  
**Taluk** : Gangavati  
**Locality** : Anegondi

**Geo – Coordinates:**  
**Lat** : 15.351248°N  
**Long** : 76.485278°E



## History

Anegondi was the earlier capital of Vijayanagara rulers and as a result a number of structures came during the period. Anegondi fort owes its origin to Kakatiya ruler (13<sup>th</sup> c) and the work lasted till 18<sup>th</sup> century. During these five centuries various dynasties and local chieftains have contributed to the fort and different style of construction can be seen; these can be broadly divided into three styles.

## 3D Point Cloud



## 02. HINDU TEMPLE

### Place – Anegondi

**District** : Koppal  
**Taluk** : Gangavati  
**Locality** : Anegondi

**Geo – Coordinates:**  
**Lat** : 15.352070°N  
**Long** : 76.486855°E

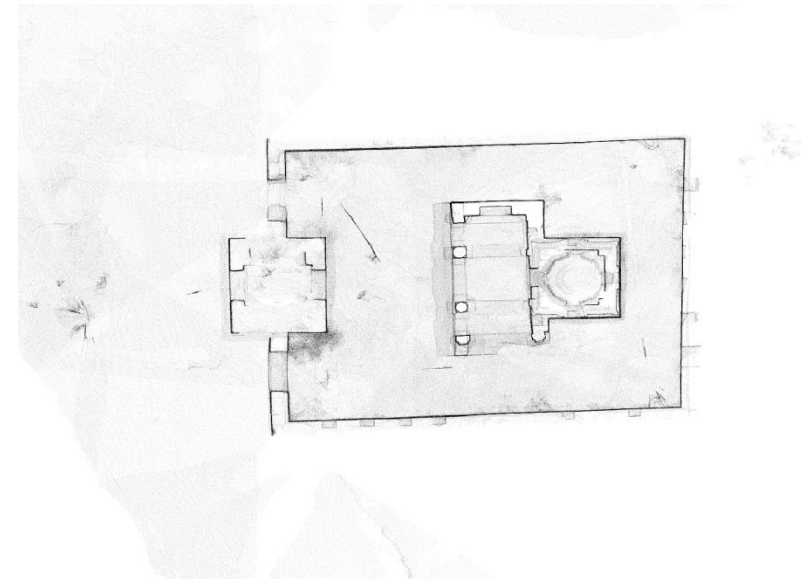


## History

This ancient and historical town of Anegondi on the left bank of river Tungabhadra was the earlier capital of Vijayanagara empire until it was shifted to Hampi, here are magnificent buildings of Vijayanagara period, which possess five specimens of art, but now is in a state of complete ruins.

**Ranganath temple:** This east-facing temple situated in the centre of the village. The ground plan consists of a *garbhagriha*, an *antarala*, a *sabhamantapa* and a *mahamantapa*. In the *garbhagriha* on a high *pitha* is the sculpture of Ranganatha, sleeping on Sesha (serpent), *antarala* is plain and simple, and the *antarala* doorways contain images of Anjaneya and Garuda.

**3D Point Cloud**



## 03. BALAJI TEMPLE

Place – Hanumasagar

District : Koppal

Taluk : Gangavati

Locality : Anegondi

Geo – Coordinates:

Lat : 15.877002°N

Long : 76.046662°E



### History

### 3D Point Cloud

This ancient temple is located on top of the hill near the fort. Its ground plan consists of a *garbhagriha*, *antarala* and a *sabhamantapa*. In the *garbhagriha* is a freestanding sculpture of Venkateshwara / Balaji, its doorframe has *latha sakha* and Ganesha in *lalatabimba*. The open *antarala* has pillars.

*Sabhamantapa* has four pillars; the ceiling has a beautifully excavated star. It has two small entrances, their doorframes have *lathasakhas*, and Gajalakshmi in the *lalatabimba*.

In front of the temple is a sculpture of Garuda and a Garuda pillar.

An annual fair is held during navaratri festivals.



## 04. KANAKACHALA TEMPLE

Place – Kanakagiri

District : Koppal

Taluk : Gangavati

Locality : Kanakageri

Geo – Coordinates:

Lat : 15.571698°N

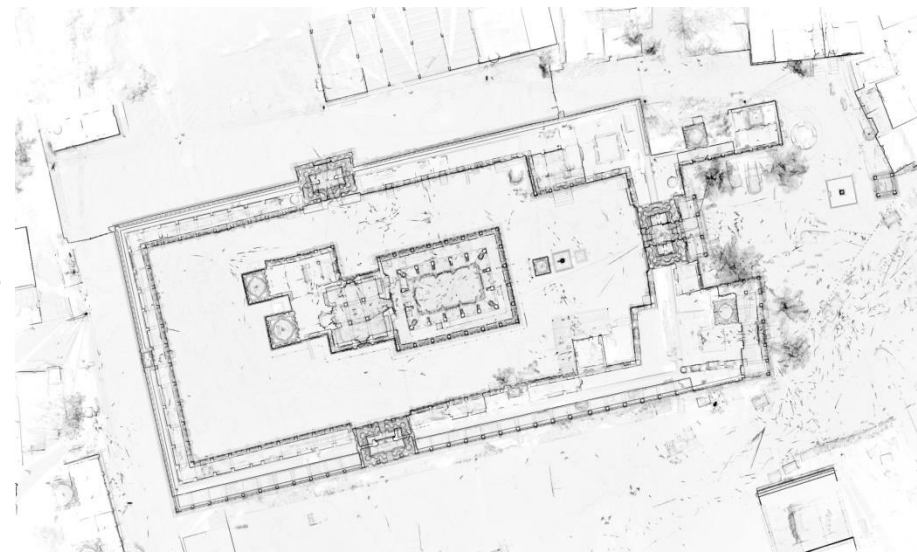
Long : 76.420076°E



### History

This temple is a large one and considered to be an architectural charm; it is a fine specimen of South Indian architecture of the Vijayanagara times and has spacious halls and massive pillars. The *Gopuras* and walls have well executed sculptures. This temple has elegantly carved statues of Rajas and Ranis in black polished stone and several large wooden statues and plaster models of mythological figures

### 3D Point Cloud



## 05. MOSQUE

Place – Kanakagiri

District : Koppal

Taluk : Gangavati

Locality : Kanakageri

Geo – Coordinates:

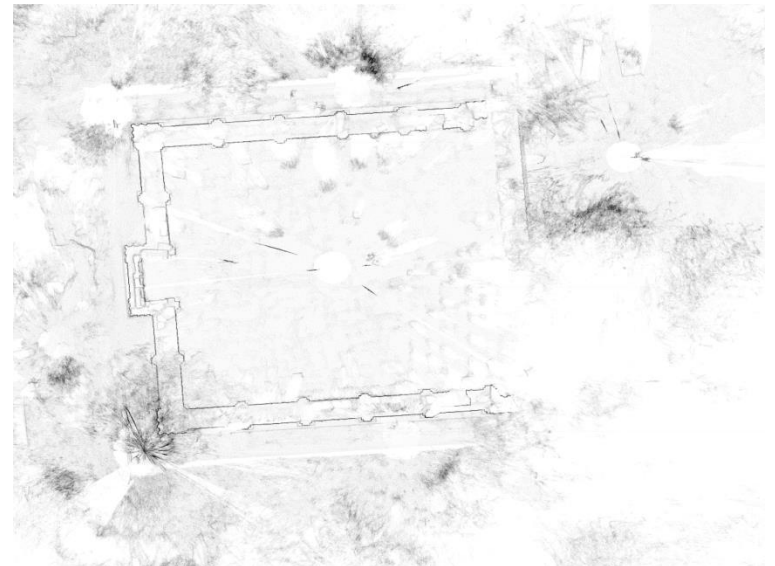
Lat : 15.568969°N

Long : 76.411341°E



## History

## 3D Point Cloud

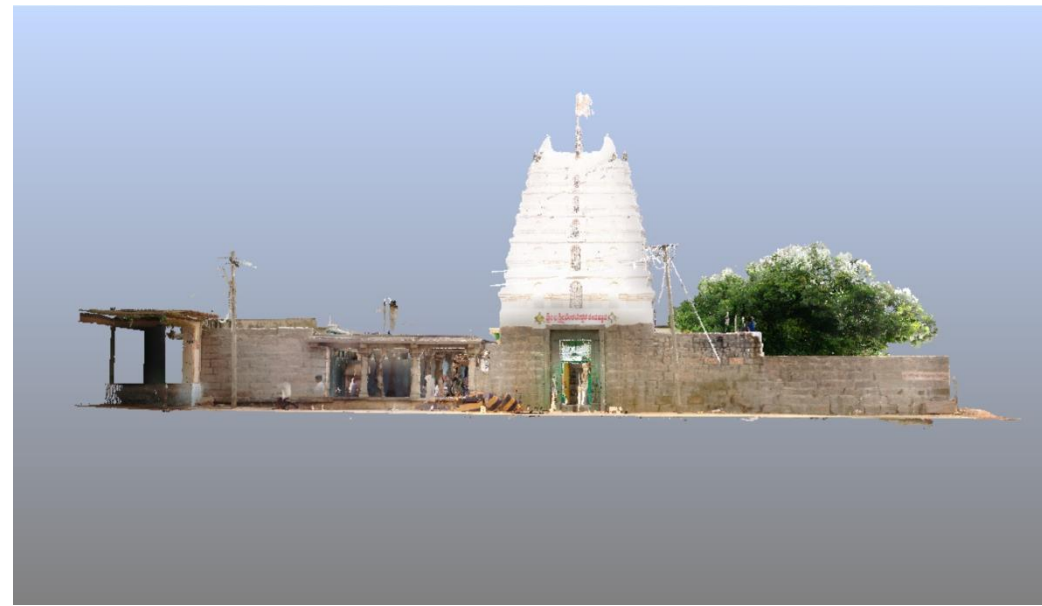


## 06. VENKATESHWARA TEMPLE

### Place – Venkatagiri

**District** : Koppal  
**Taluk** : Gangavati  
**Locality** : Venkatagiri

**Geo – Coordinates:**  
**Lat** : 15.462317°N  
**Long** : 76.445722°E

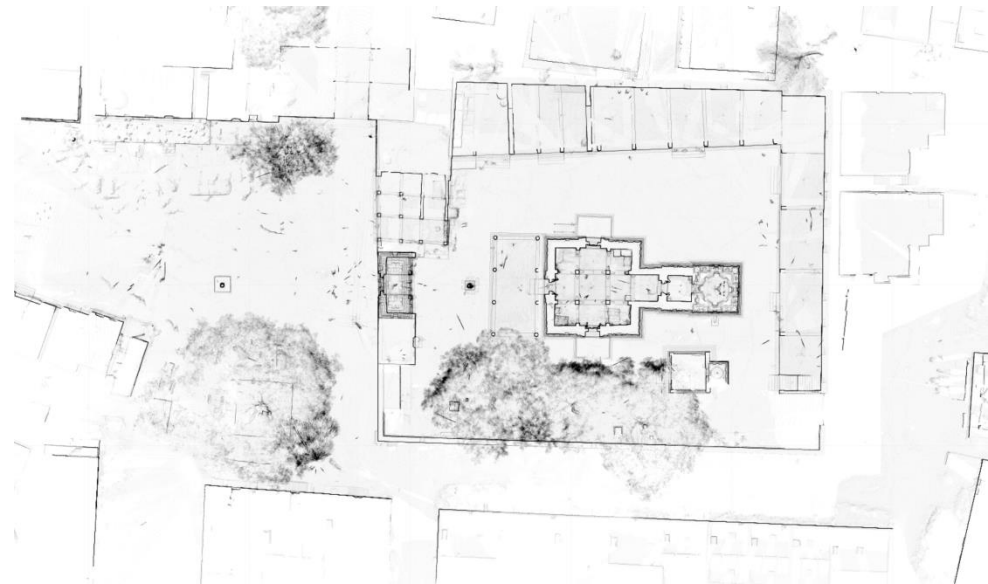


## History

The temple consists of a *garbhagriha*, an *antarala*, a *sabhamantapa* and a *dvaramantapa*. The walls of the *garbhagriha* are of granite at the corners are four pillars, the ceiling is plain, in the center on a *pitha* is the standing sculpture of Venkataramana, the doorframe of the *garbhagriha* consist of *rathnasakha*, *lathasakha* and *stambhasakha*. This is a *nirandhara* temple. In the *antarala* there are four pilasters at the corners, the ceiling (bhuvaneshwari) is of lotus pattern. The doorframe of the *antarala* has *rathnasakha*, *lathasakha* and *stambhasakha*.

In the *sabhamantapa* there are four pillars in the centre, these pillars are square from top to bottom. The walls of the *sabhamantapa* have pilasters with carved figures of Vishnu, Vamana, Balichakravarti, Rama, etc. The *dvaramantapa* is enclosed by walls and have no pillars. Opposite to the *dvaramantapa* is a *deepastambha*, this has a square platform in stone at the bottom.

## 3D Point Cloud



## 07. BHAOGAPURESHA TEMPLE

Place – Nouli

District : Koppal  
Taluk : Gangavati  
Locality : Nouli

Geo – Coordinates:  
Lat : 15.659362°N  
Long : 76.524722°E



## History

The temple consists of a *garbhagriha*, an *antarala*, a *sabhamantapa* and a *dvaramantapa*. The walls of the *garbhagriha* are of granite at the corners are four pillars, the ceiling is plain, in the center on a *pitha* is the standing sculpture of Venkataramana, the doorframe of the *garbhagriha* consist of *rathnasakha*, *lathasakha* and *stambhasakha*. This is a *nirandhara* temple. In the *antarala* there are four pilasters at the corners, the ceiling (*bhuvaneshwari*) is of lotus pattern. The doorframe of the *antarala* has *rathnasakha*, *lathasakha* and *stambhasakha*.

In the *sabhamantapa* there are four pillars in the centre, these pillars are square from top to bottom. The walls of the *sabhamantapa* have pilasters with carved figures of Vishnu, Vamana, Balichakravarti, Rama, etc. The *dvaramantapa* is enclosed by walls and have no pillars. Opposite to the *dvaramantapa* is a *deepastambha*, this has a square platform in stone at the bottom.

## 3D Point Cloud



## 08. SHIVA TEMPLE

Place – Muneerabad

District : Koppal  
Taluk : Koppal  
Locality : Muneerabad

Geo – Coordinates:  
Lat : 15.304627 °N  
Long : 76.345913°E



## History

Somesvara temple facing east consists of a garbhagriha, a sukanasi and a navaranga. Garbhagriha is square in it on a plain square pitha is a sivalinga. The doorway of the garbhagriha has three plain sakhas which continues on the lintel. The sukanasi doorway consist of five sakhas with two vertical rows of square flowers and two vertical rows of grilled windows (jala-vatayana) having perforation filled with square flowers. At the base are Saiva dvarapalas standing in tribhanga holding trisula, damaru, gada in three hands and the fourth hand in abhayamudra.

The navaranga is open on three sides, has four central pillars and ten pillars over the kakshasana. The central pillars consists of moulded base, shaft with lower square block, 16-18-16 sided middle portions, upper square block, pot top and disc capital with flat edge. The remaining pillars consist of a shaft having lower square block, pot top and corbels with sloping sides having raised band at the center. A nandi is kept in the navaranga.

## 3D Point Cloud





**09. KUMARA RAMARANA  
KUMMATAGIRI  
Place – Kummatadurga**

**District : Koppal  
Taluk : Koppal  
Locality : Kummatadurga**

**Geo – Coordinates:  
Lat : 15.410868 °N  
Long : 76.375705 °E**



## History

The Kammata Durga, also spelled as Kammatadurga, (near Hemagudda is a village in the Koppal taluk of Koppal district in the Indian state of Karnataka. Kammatadurga is located Northeast to District Headquarters Koppal.

## 3D Point Cloud



# 10. SOMESHWARA TEMPLE

## Place – Pura

**District :** Koppal  
**Taluk :** Kushtagi  
**Locality :** Pura

**Geo – Coordinates:**  
**Lat :** 15.712593 °N  
**Long :** 76.463477°E

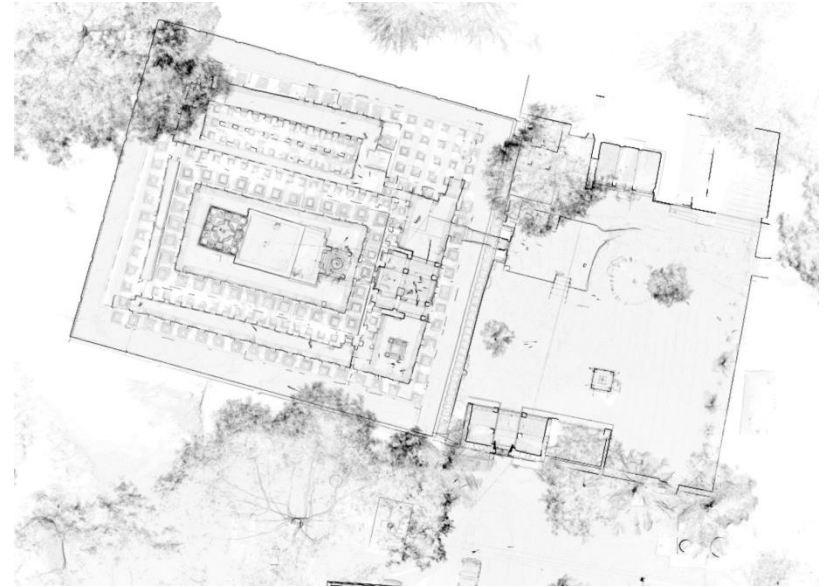


## History

The temple is known as Kotilingeswara temple. This is a fine specimen of Vijayanagara period. In the spacious prakara are number of mantapas containing rows of lingas. The temple consists of a garbhagriha, an antarala, a sabhamantapa, an ardhmantapa and a mukhamantapa and a large prakara. A sivalinga of about 54 cm is installed on a square pitha in the garbhagriha. These are pilasters on the four corners of the garbhagriha, its ceiling has a padma, and the entrance is very small. The antarala has four corner pilasters and the doorframe has four sakhas with a gajalakshmi image on the lalata. Sabhamantapa contains four pillars in the middle, four corner pilasters and eight ardhakambas, in the center, facing the garbhagriha is a Nandi sculpture.

In between sabhamantapa and mukhamantapa is ardhmantapa, with small entrance on either side, here in the uttaranga are five kostas, which are modeled as replicas of small sikharas, Mukhamantapa contains four corner pilasters, their doorframe has five sakhas and its gajalakshmi in the lalata.

## 3D Point Cloud



# 11. SOMANATHA TEMPLE

## Place – Hulgeri

**District :** Koppal  
**Taluk :** Kushtagi  
**Locality :** Hulgeri

**Geo – Coordinates:**  
**Lat :** 15.95384 °N  
**Long :** 76.054752°E



## History

The ground plan of the temple consists of a garbhagriha, an antarala and an open sabhamantapa. In the garbhagriha is black stone Siva linga of about 1 m. The entrance doorway of the garbhagriha has three sakhas of padma and creeper pilasters, scrolls patterns. In the lalatabimba is the image of Gajalakshmi and on top of it a projected pattika. The antarala has simple decoration like padma, pilasters and three rows of Jalandras, the doorframe has padma pattikas.

The sabhamantapa has four in the centre pillars having square bottoms, circular tops and bell shaped in the middle, the remaining pillars set on the kakshasana, have square, octagonal, circular, octagonal and square from bottom to top respectively. The uttranga of the sabhamantapa contains four niches, these niches are modeled after dravida and vesara sikhars.

Temple stands on a adhistana of about 1m high, having upana, jagati, tripattakamuda and padma. The roof sabhamantapa's is surrounded by kapota. The sikhara on top of garbhagriha is in kadamba nagara style

## 3D Point Cloud

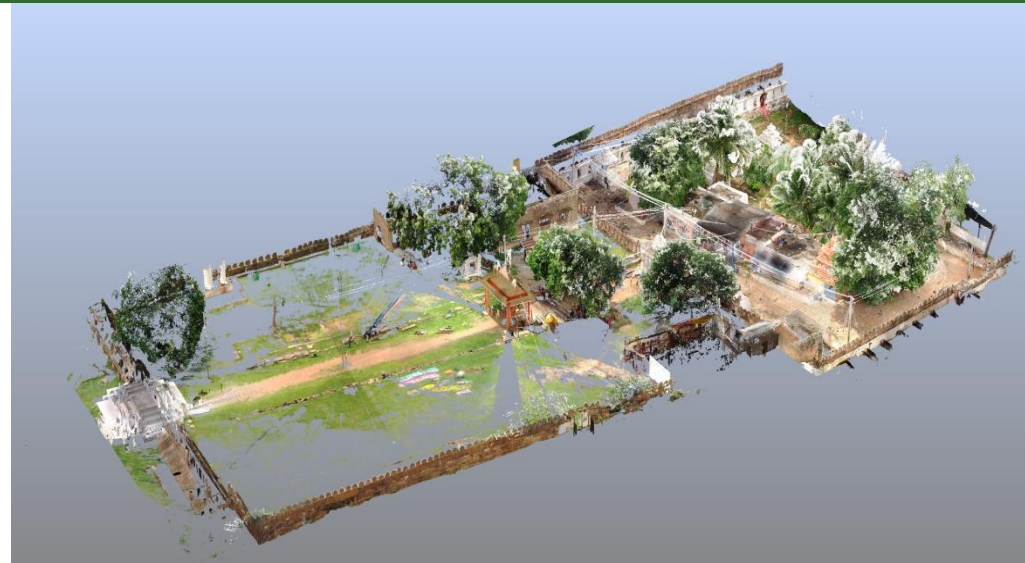


## 12. CHANDRALINGA TEMPLE

Place – Bilagi

District : Koppal  
Taluk : Kushtagi  
Locality : Bilagi

Geo – Coordinates:  
Lat : 15.891948 °N  
Long : 76.011765°E



### History

The Chandaalingeswara Temple, also spelled as Chandaalingeswara Kshetra, (near Bilagi is a village in the Kushtagi taluk of Koppal district in the Indian state of Karnataka. To the left of the Mahadwara are columns and beams... seems like an incomplete shelter for pilgrims. And to the right is a shelter and the unique walls which create a fort like look. The gateway as seen from inside. A short walk thorough a sandy path to the next gateway. This temple seems to be built in the path of a major stream- I say that because of the presence of sand here. Rain water might have washed down sand from the hill next to this temple. In fact the temple is situated in a bowl at the base of a hill.

### 3D Point Cloud



## 13. ESHWARA TEMPLE Place – Antarthana

**District :** Koppal  
**Taluk :** Kushtagi  
**Locality :** Antarthana

**Geo – Coordinates:**  
**Lat :** 15.98926 ° N  
**Long :** 76.016672 ° E

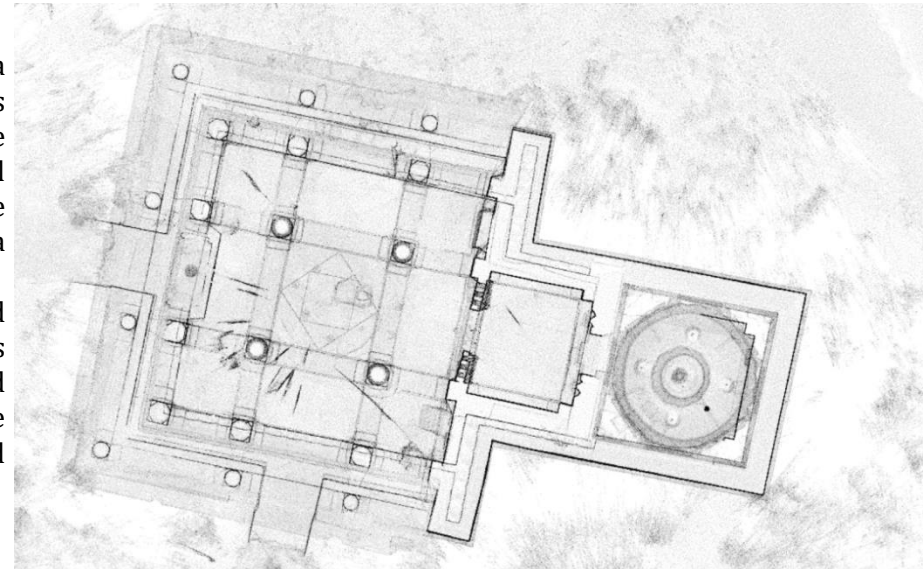


### History

### 3D Point Cloud

The ground plan of the temple consists of a garbhagriha, an antarala and a sabhamantapa, to the left there is separate garbhagriha, it is ruined only its bitti is remaining. In the main garbhagriha is a Shivalinga of black stone, the garbhagriha doorframe has circular ardhakamba, and creeper scroll decorating, in the centre of the lalata is the figure of Gajalakshmi. In the antarala there are jalandras containing padmaja, on top of the lalata is a projected pattika.

The open sabhamantapa contains 22 pillars four pillars in the middle and the remaining are spread over, some are set on the kakshasana. The pillars in the middle have square at the base, followed by set of bangles, bell and set of bangles. The remaining pillars have square base, octagonal in the middle and kumbha at the top. In the exterior the sabhamantapa is provided with kapota.



# 14. MOSQUE

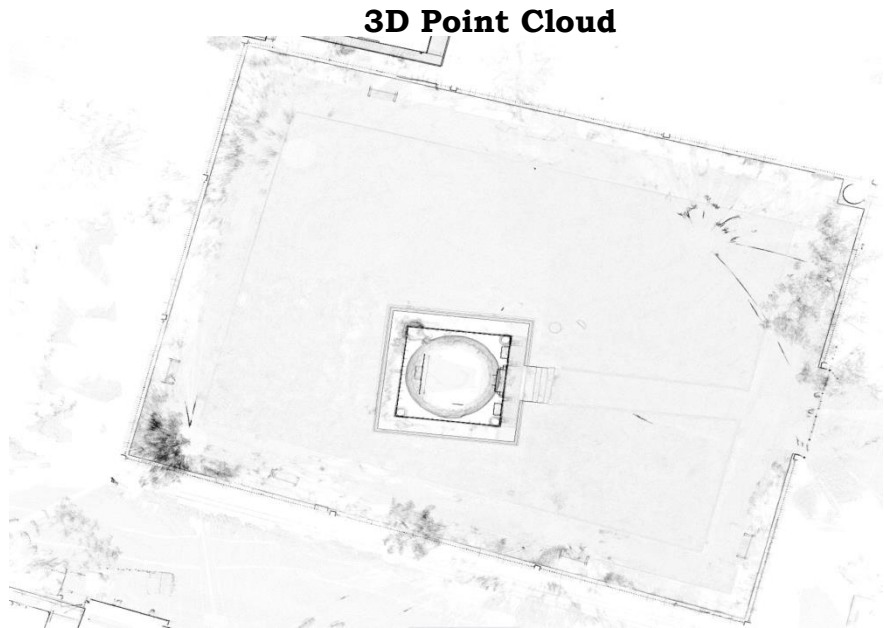
Place – Kushtagi

District : Koppal  
Taluk : Kushtagi  
Locality : Kushtagi

Geo – Coordinates:  
Lat : 15.749008 °N  
Long : 76.187572 °E



## History



## 15. SOMESHWARA TEMPLE

Place – Purthgeri

District : Koppal  
Taluk : Kushtagi  
Locality : Purthgeri

Geo – Coordinates:  
Lat : 15.985437 °N  
Long : 76.015205°E



### History

The ground plan of this temple consists of a garbhagriha, an antarala and a sabhamantapa. In the garbhagriha is a linga, of black stone, about 1 m high. The garbhagriha doorframe has ardhakambha and projected pattika. In the lalatabimba is the figure of Gajalakshmi.

A Nandi sculpture, facing the linga is placed in the antarala. The sabhamantapa portion is ruined and only its foundation can be seen. The antarala doorframe has jalandras with carvings and has pilasters on the walls.

### 3D Point Cloud



# 16. MAHADEVA TEMPLE

## Place – Vajarabanda

**District :** Koppal  
**Taluk :** Yelburga  
**Locality :** Vajarabanda

**Geo – Coordinates:**  
**Lat :** 15.667925 °N  
**Long :** 76.10799°E



## History

## 3D Point Cloud

The ground plan of the temple consists of a garbhagriha, an open antarala and a sabhamantapa. The entrance of the garbhagriha doorway contains ardhakamba, in the Lalatabimba is the figure of Gajalakshmi, and in side is Kalmeshvara Mahadeva linga. In the open antarala is a Nandi sculptor, which is facing the garbhagriha.

Sabhamantapa also has a Nandi sculpture and consists of four pillars in the center, having square base and top, 8-16 sided pattika in the center and circular capital and the ceiling resting on horizontal crossbeam. Two pillars each are set on the kakshasana in the sabhamantapa, to the east, south and north. Its walls are half enclosed, here the west, south and north walls have niches, these have ardhakamba and with purnakambha on either side of the niches and on top are modeled after vesara sikhara.

In the exterior, the temple is built on high jagati. Its adhistana contains upana, jagati, tripatta kumuda and padma.

To the north of the temple is an ancient well known as Kapila bavi in same vicinity are veeragals and remains of an ancient temple.

