

01. Nalaknadu Palace

Place - Yevakapadi

District : Kodagu
Taluk : Madikeri
Locality : Yevakapadi

Geo - Coordinates:
Lat : 12.2348° N
Long : 75.6406° E

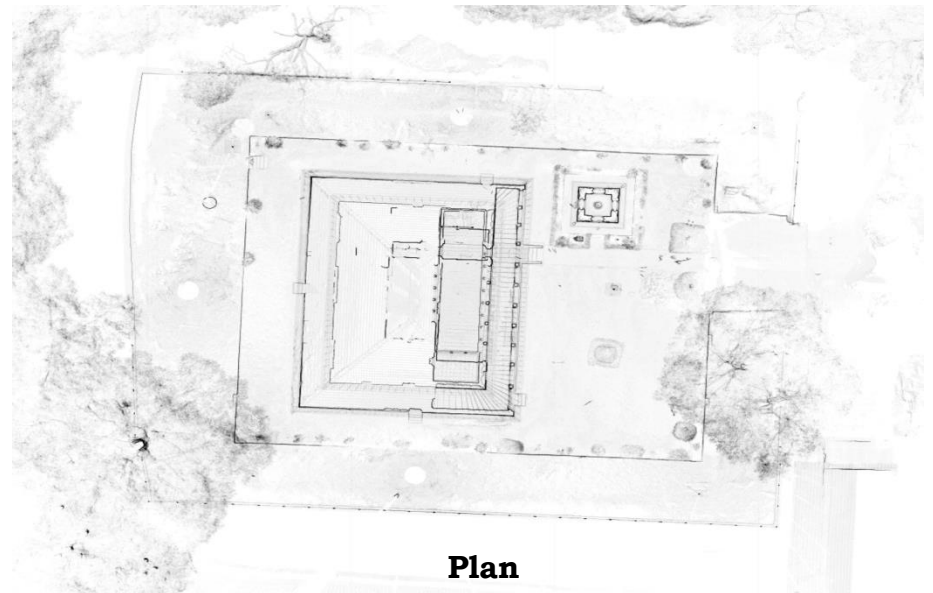


History

The Nalaknadu Palace is located at Yevakapadi village in Madikeri taluk, Kodagu District.

The Palace is a large structure, with open hall and several rooms. The structure is a tiled roofed one. Large pillars supported by beams and rafts support the high ceiling. The open front hall, meant for conducting public meeting, had painting on the wall. The wood and stuccowork is quite artistically done. Palace has a large compound wall and an entrance. In front of the main open hall, a beautiful small Kalyana mantapa is also built.

3D Point Cloud



Plan

02. Raja s Tomb

Place - Madikeri

District : Kodagu
Taluk : Madikeri
Locality : Madikeri

Geo - Coordinates:
Lat : 12.4335° N
Long : 75.7399° E

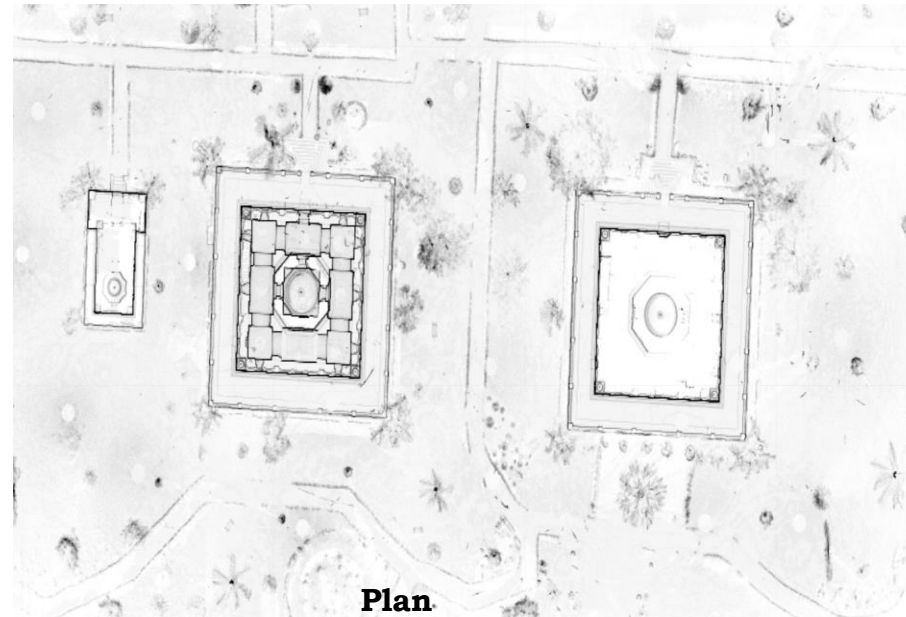


History

The Raja' Tomb is located at Madikeri town in Madikeri Taluk, Kodagu District.

Raja's tombs are in fact the tombs of the Kodava Kings Veeraraja, Lingarajendra, Biddanda Bopu and his son Biddanda Somaiah. They are located in the northern extremity of Mahadeopet and are enclosed by a high embankment. Lingarajendra completed the tomb of his elder brother, Virarajendra. To the right of his tomb, is Lingarajendra's tomb built in 1820. Besides, there are several other tombs belonging to the Raja's priest, army chief and others.

3D Point Cloud

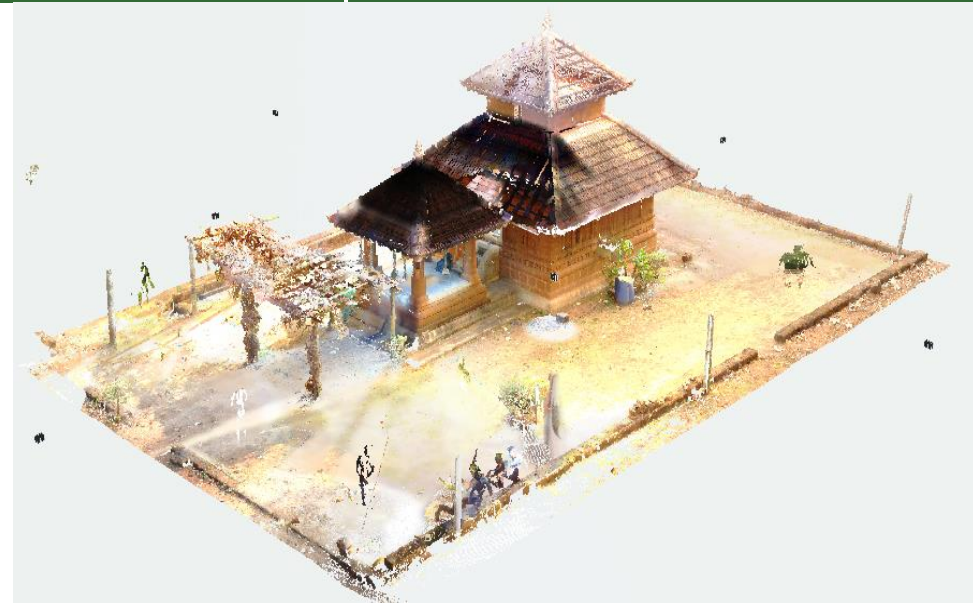


Plan

03. Eshwara Temple Place - Arapattu

District : Madikeri
Taluk : Madikeri
Locality : Arapattu

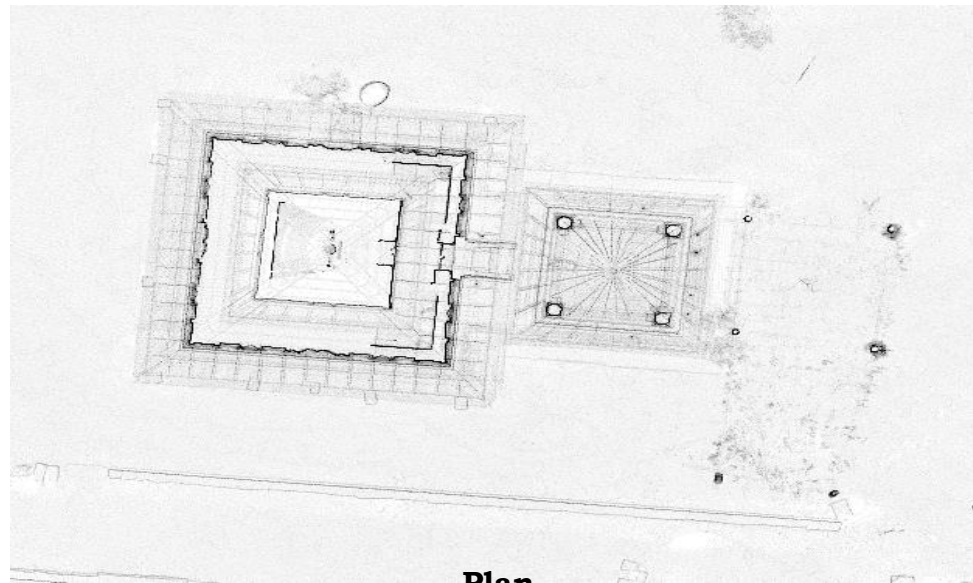
Geo - Coordinates:
Lat : 12.2359° N
Long : 75.7361° E



3D Point Cloud

History

Eshwara Temple is situated at Arapattu village in center of the forest in Madikeri taluk, Kodagu District.



Plan