

01. Bahamani Eidgah Maidan

Place - Kalaburagi

District : Kalaburagi
Taluk : Kalaburagi
Locality : Kalaburagi

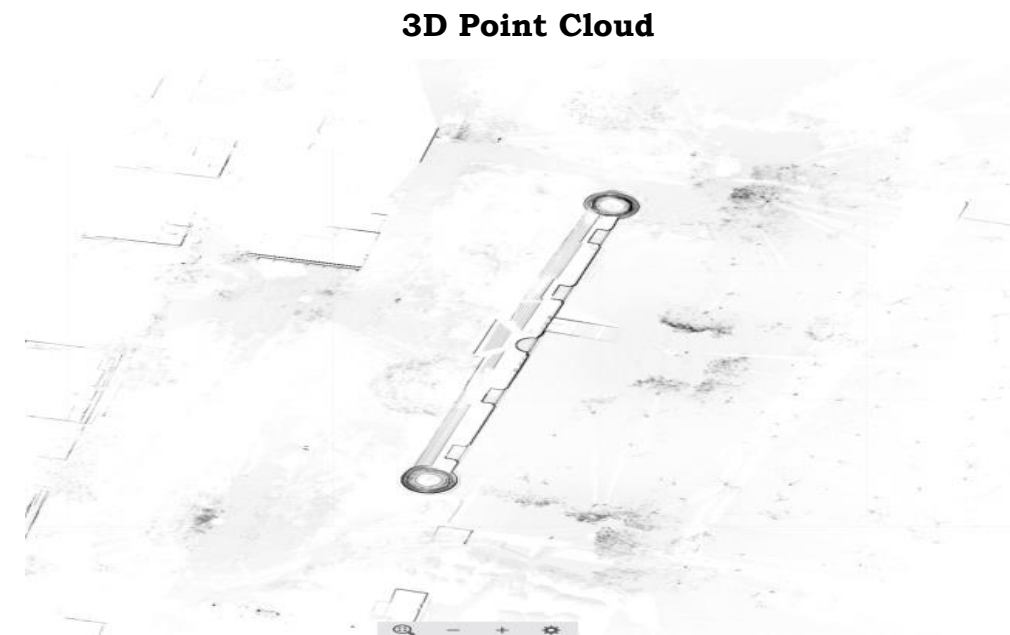
Geo - Coordinates:
Lat : 17.3444 °N
Long : 76.8120 °E



3D Point Cloud

History

Eidgah Maidan in KABALURAGI
District near Chor Gumbaz.



2. Bahamani Tombs

Place - Holkonda

District : Kalaburagi
Taluk : Kalaburagi
Locality : Holkonda

Geo - Coordinates:
Lat : 17.5303° N
Long : 76.9728° E



History

The tomb of the Shaik Muhammad Mashyaka, is the earliest structure in the *Dargah* of the Shaikh. The heavy sloping walls, the simple arch shape of the merlons, the fluted domed corner finials and *guldastas* are all found here. The receding plans of the entrance portal, not found in the earliest building in Gulbarga are seen here.

3D Point Cloud



3. Brahma, Vishnu, Maheshwara Temple Place - Nagai

District : Kalaburagi
Taluk : Chitapur
Locality : Nagai

Geo - Coordinates:
Lat : 17.1032° N
Long : 77.0899° E

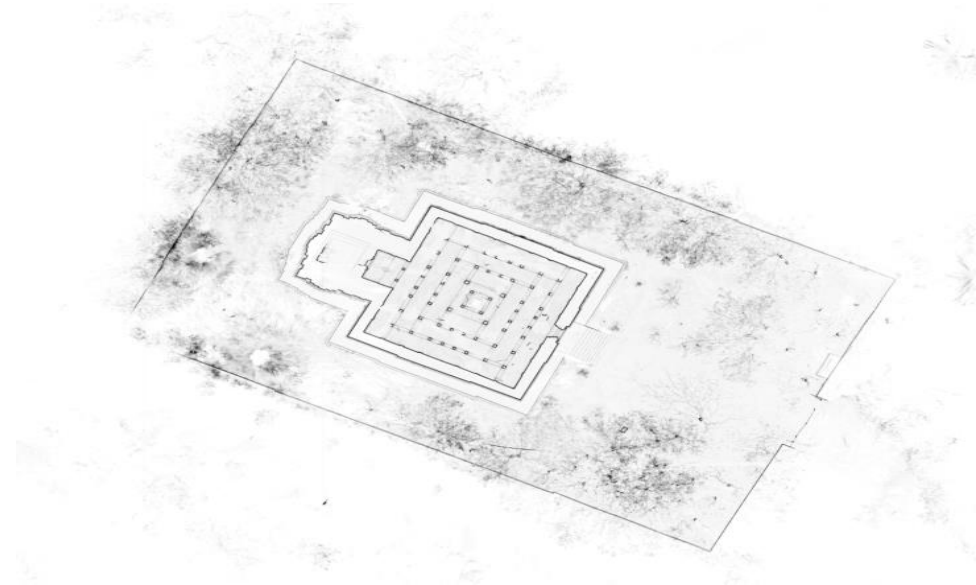


History

Temple is in Nagai village Chittapur taluk of Kalaburagi District.



3D Point Cloud

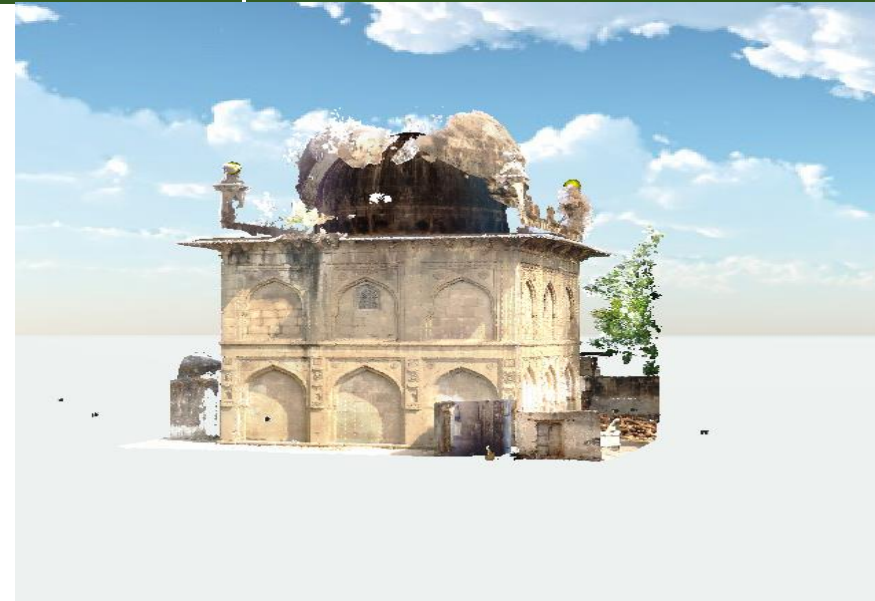


04. Chand Bibi's Tomb

Place - Kalaburagi

District : Kalaburagi
Taluk : Kalaburagi
Locality : Dargah Sheriff

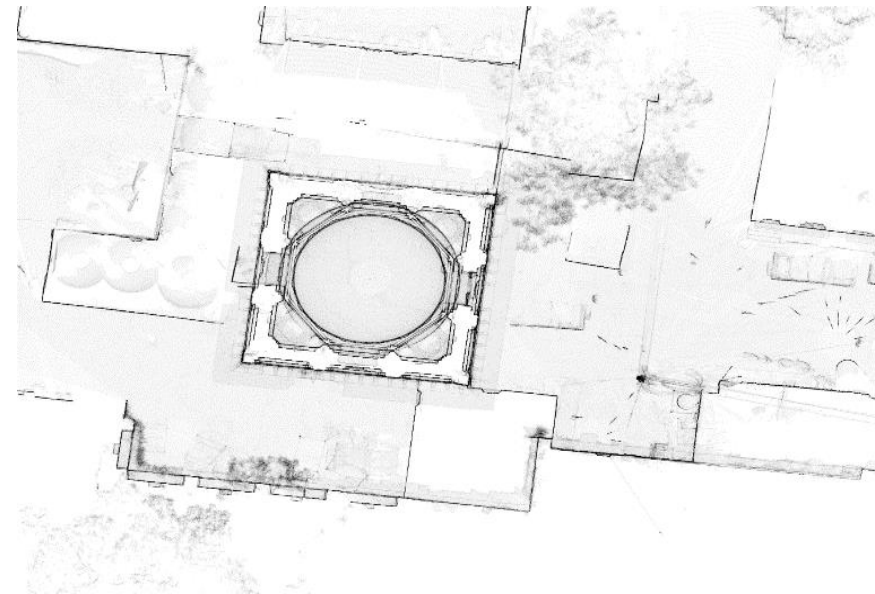
Geo - Coordinates:
Lat : 17.3436 ° N
Long : 76.8510 ° E



History

This tomb which was in a bad state of preservation, was later properly conserved. The deep crevices on the surface of the dome have been filled up with cement and concrete, toned to match with the original colour of the masonry. The turrets of the parapet have been restored. The floor under the dome was cleared of debris, leading to the discovery of old stone flooring in a well-preserved condition. No grave could be traced.

3D Point Cloud

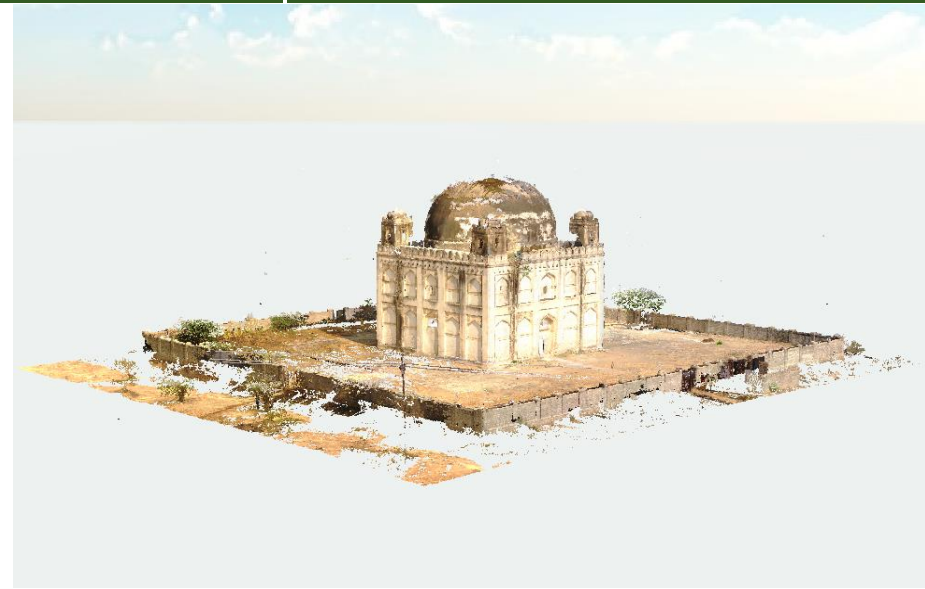


05.Chor Gumbaj

Place - Kalaburagi

District : Kalaburagi
Taluk : Kalaburagi
Locality : Kalaburagi

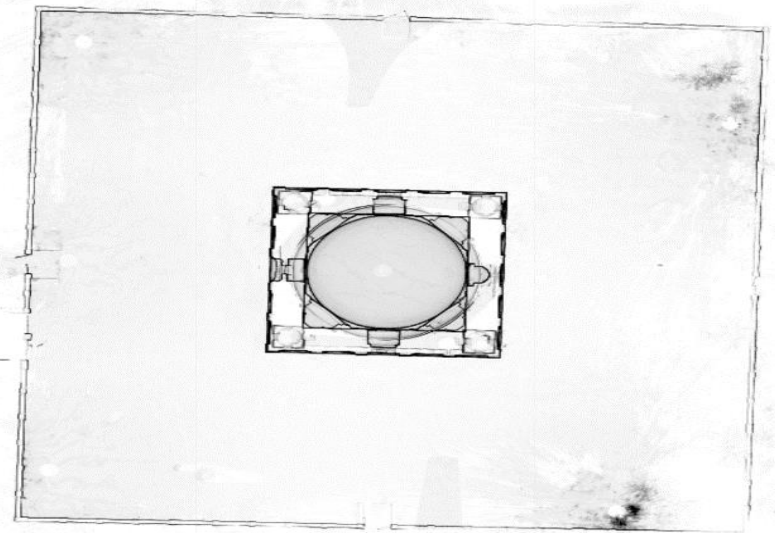
Geo - Coordinates:
Lat : 17.3478°N
Long : 77.8112 °E



History

The building has a set of rooms arranged in a labyrinth 'Bhul bhulayyan', so common in Indian Muslim architecture. The name Chor Gumbad perhaps refers to this arrangement, rather than to its association with thieves. The monument is of considerable dimensions. The interior, which consists of a hall, measures 22.4 m x 22 m ft. The dome, which is hemispherical, rises to a height of about 100 ft from the ground.

3D Point Cloud



06.Dargah of Khwaja Bandhe Nawaz Place – Dargah Sheriff

District : Kalaburagi
Taluk : Kalaburagi
Locality : Dargah Sheriff

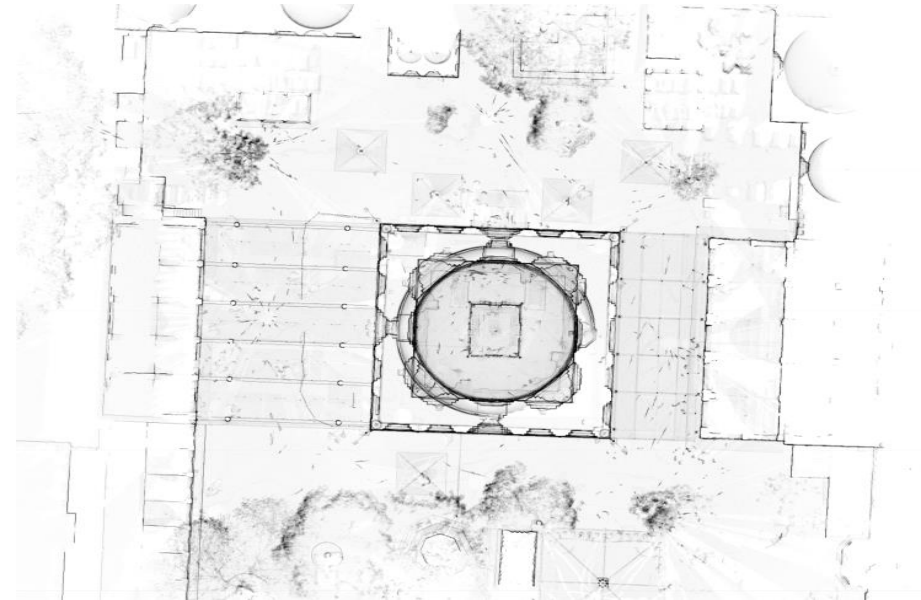
Geo – Coordinates:
Lat : 17.3439 ° N
Long : 76.8509 ° E



3D Point Cloud

History

The tomb of Khwaja Bande Nawaz is of great dimensions. It is venerated by both Muslims and Hindus. The arches of the *Dargah* are considered a speciality of the Bahamani architecture.. The excellent paintings on the walls and domes are in the Turkish and Iranian styles. In the premises of the *Dargah*, there is also a library, containing about 10,000 books in Urdu, Persian and Arabic, on history, philosophy, religion, etc



**07.Dargah of Hazrat
Shaik Sirajuddin Junaidi
Place - Kalaburagi**

District : Kalaburagi
Taluk : Kalaburagi
Locality : Kalaburagi

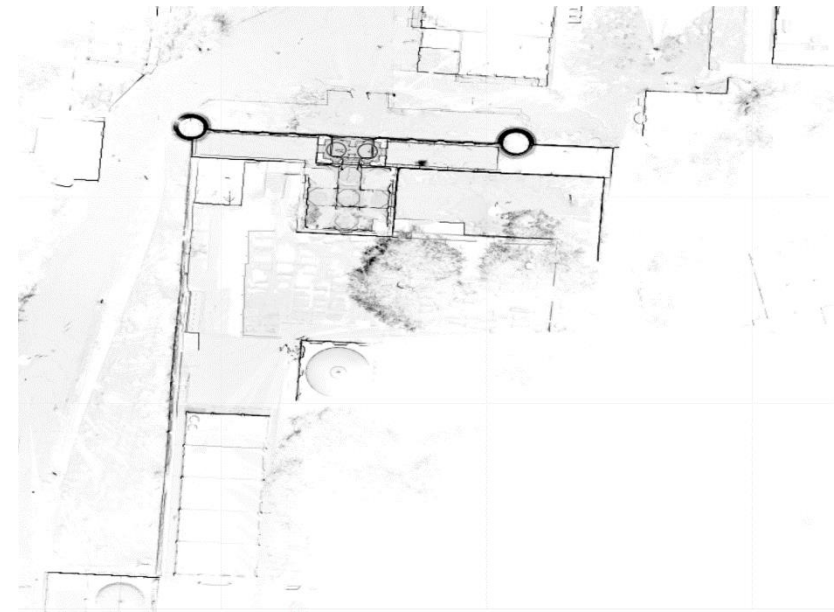
Geo - Coordinates:
Lat : 17.3515 ° N
Long : 76.8234 ° E



3D Point Cloud

History

The saint was the preceptor of Hasan Bahman Shah. He is said to have died and was buried in the Rawza-i-Shaik, south of the Gulbarga Fort. But, nothing remains of the buildings belonging to the 14th century A.D. Whatever is extant within the Dargah today has been dated to the 15th and 16th centuries A.D. The façade of the gateway has two round minarets at either end, which are said to resemble those of the *madrassa* at Bidar.



**08.Dargah, Mosque,
Sarai of H-Kamal Mujarrad
Place - Kalaburagi**

District : Kalburagi
Taluk : Kalaburagi
Locality : Kalaburagi

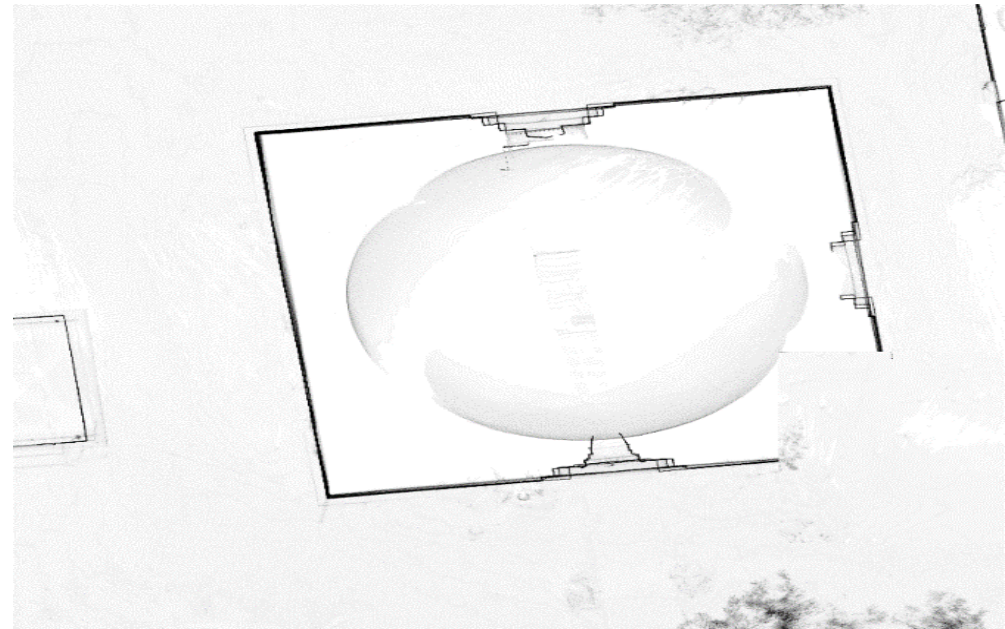
Geo - Coordinates:
Lat : 17.3408° N
Long : 76.8549° E



3D Point Cloud

History

This Dargah or Mosque is in Kalaburagi city of Kalaburagi district.



09. Gumta

Place - Andola

District : Kalaburagi
Taluk : Jewargi
Locality : Andola

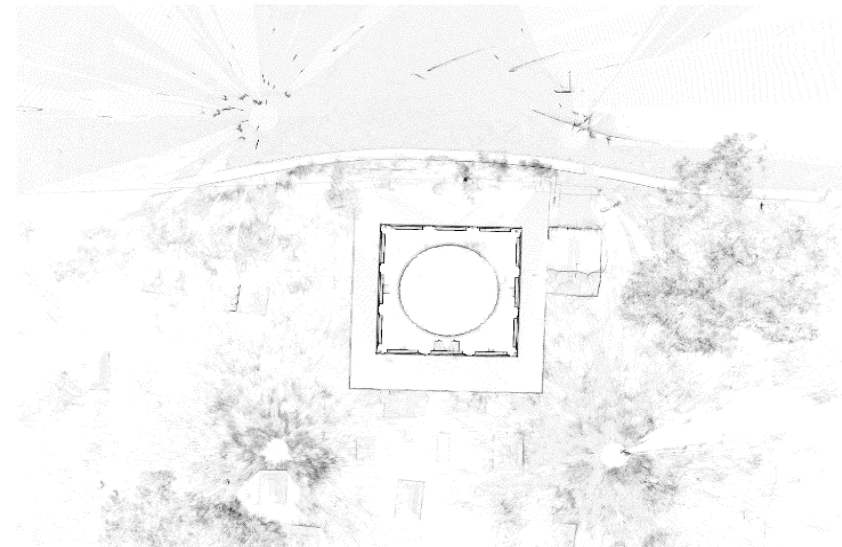
Geo - Coordinates:
Lat : 16.9502 ° N
Long : 76.8378 ° E



3D Point Cloud

History

Gumta is in Andola village of Jewargi Taluk in Kalaburagi Distrct.



10. Ismail Mokh's Mosque & Tomb

Place - Bahamanipur

District : Kalaburagi
Taluk : Kalaburagi
Locality : Bahamanipur

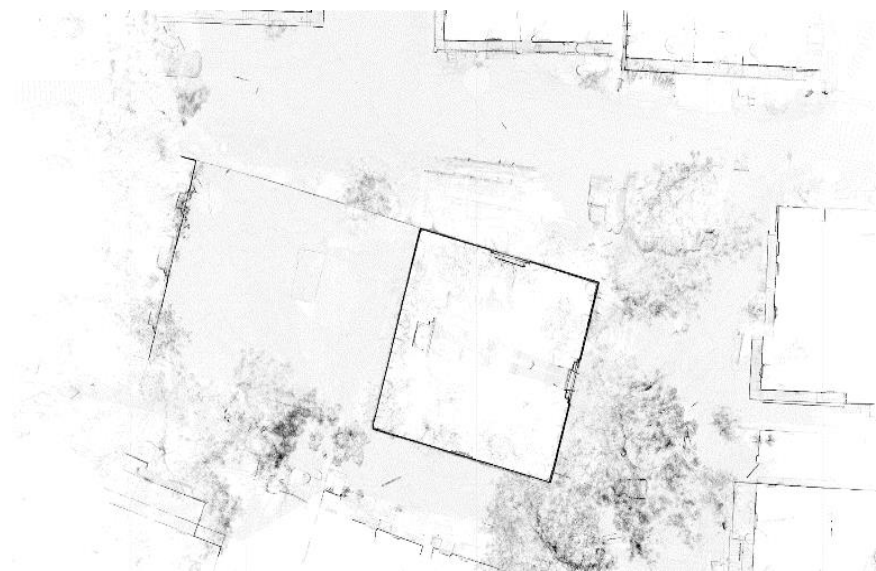
Geo - Coordinates:
Lat : 17.3446° N
Long : 76.8231° E



3D Point Cloud

History

It is a converted mosque in “pillar and lintel” style. Behind the mosque, on an open platform, are the graves of Ismail Mokh and his wife.



11. Langer- Ka- Masjid Place – Kalaburagi

District : Kalaburagi
Taluk : Kalaburagi
Locality : Kalaburagi

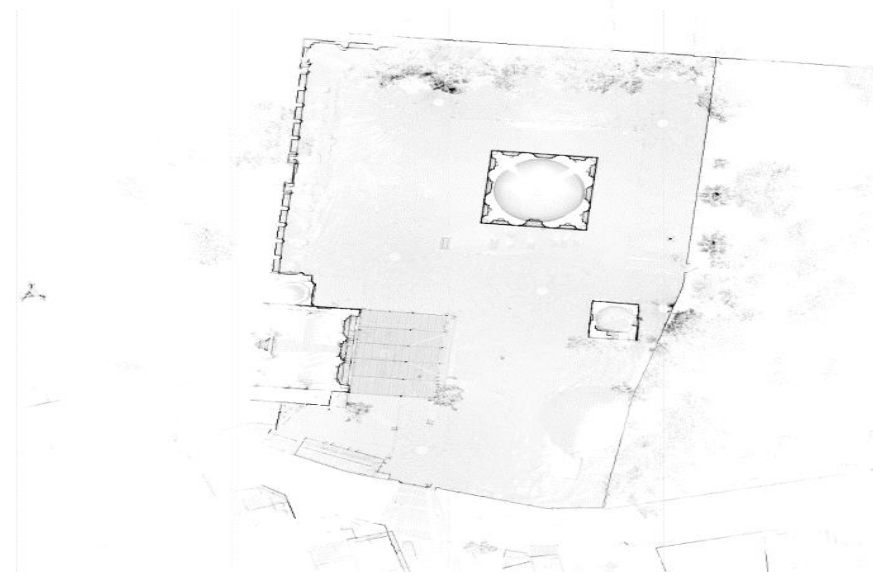
Geo – Coordinates:
Lat : 17.3645 ° N
Long : 76.8321 ° E



History

To the north of Kalaburagi lies Langer ka Masjid. It is a fine mosque and tomb dating back to the fifteenth century. The mosque displays excellent stucco ornament. It has an unusual pointed, ribbed vault over the prayer chamber. There are two groups of **Royal tombs** found in the city. One group lies to the West of the fort and the other lies to the East of the city.

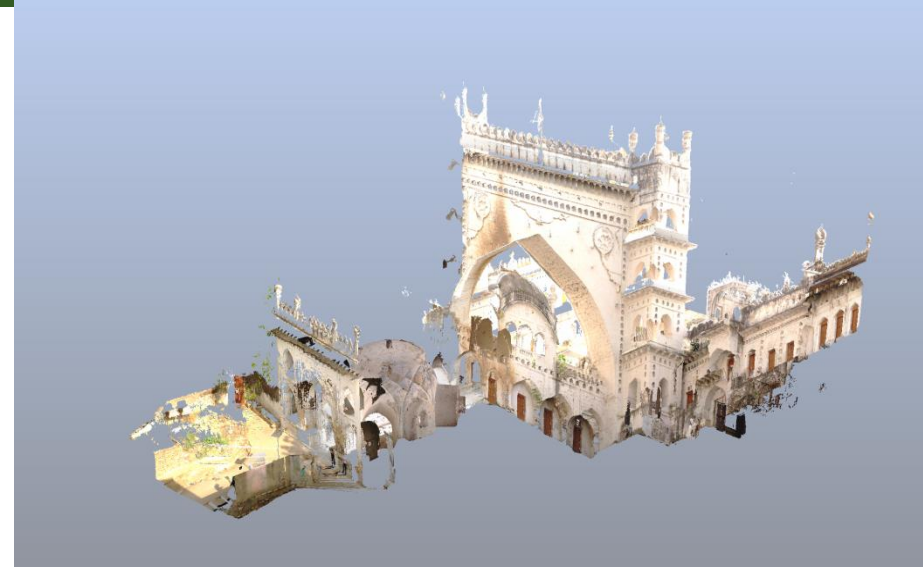
3D Point Cloud



12. Large Bijapuri Arch & Afzal Khan s Mosque Place – Dargah Sherrif

District : Kalaburagi
Taluk : Kalaburagi
Locality : Dargah Sherrif

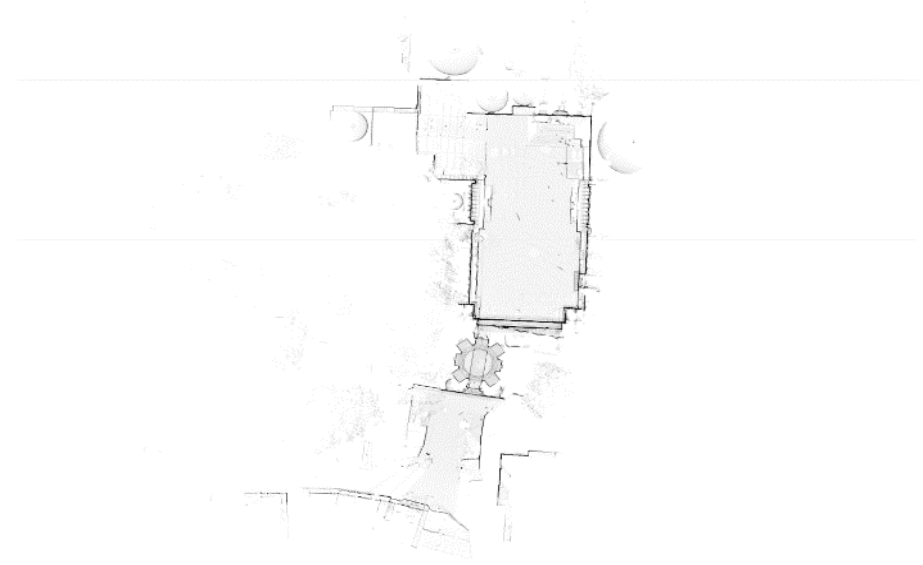
Geo – Coordinates:
Lat : 17.3206° N
Long : 76.8165° E



History

The mosque is a typical Bijapur example with the two thin side minarets. The stone chains hanging from the *chajja* resemble very much the magnificent stone chains hanging from the *chajja* and minarets of the Kali Masjid, at Lakshmesvar (Dharwar District), which are carved out of single block of stone. The mosque is noted for the carvings of the pedestals and its stucco decoration. It consist of a single hall measuring of about 7.3 m x 4.6 m.

3D Point Cloud



13. Mahishasura Temple Place - Kalaburagi

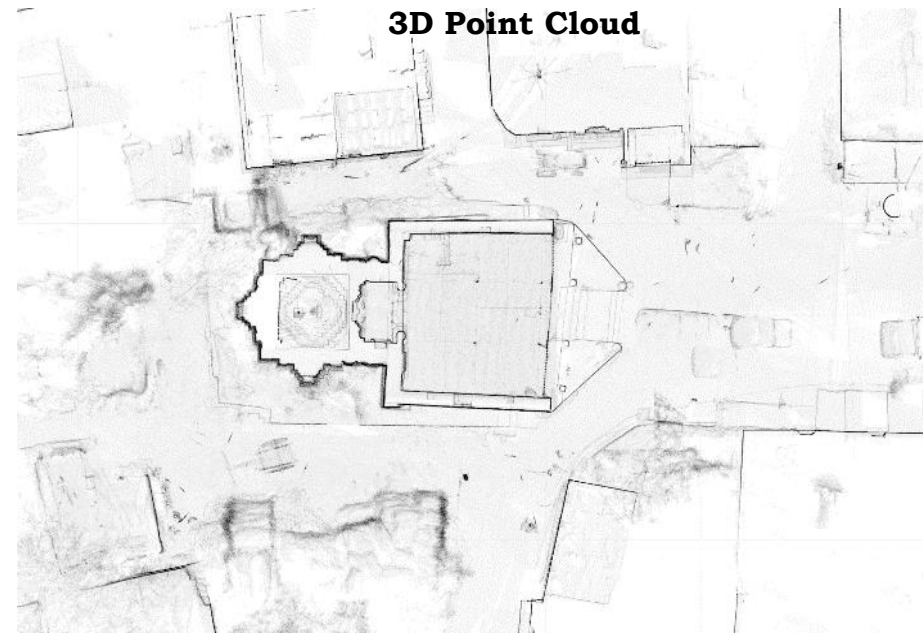
District : Kalaburagi
Taluk : Kalaburagi
Locality : Kalaburagi

Geo - Coordinates:
Lat : 17.5212° N
Long : 76.7855° E



History

This temple is in Kalaburagi city of Kalaburagi District.



14. Mosque & Tomb of Afzal Khan

Place – Afzalpur

District : Kalaburagi
Taluk : Kalaburagi
Locality : Afzalpur

Geo – Coordinates:
Lat : 17.1947° N
Long : 76.3556° E

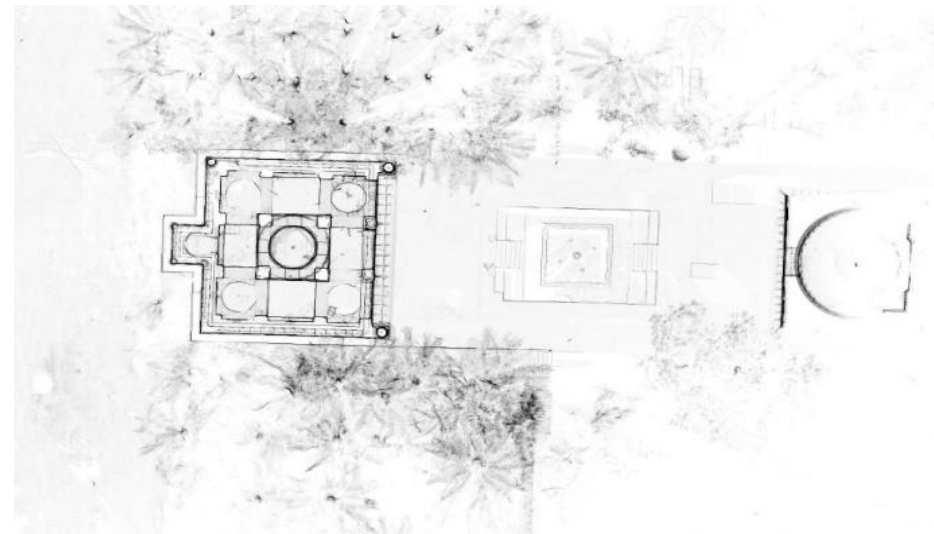


History

The plan of the monument is much like that of the Ibramin Roza at Bijapur. The tomb and mosque stand on a plinth facing each other, with a reservoir between them. These two buildings are said to have been built by the Bijapur minister Afzal Khan. The mosque is square on plan and has two thin minarets in the front. Stone chains hanging from the chajja are seen here.



3D Point Cloud



15. Mosque & Well Place – Hirapur

District : Kalaburagi
Taluk : Kalaburagi
Locality : Hirapur

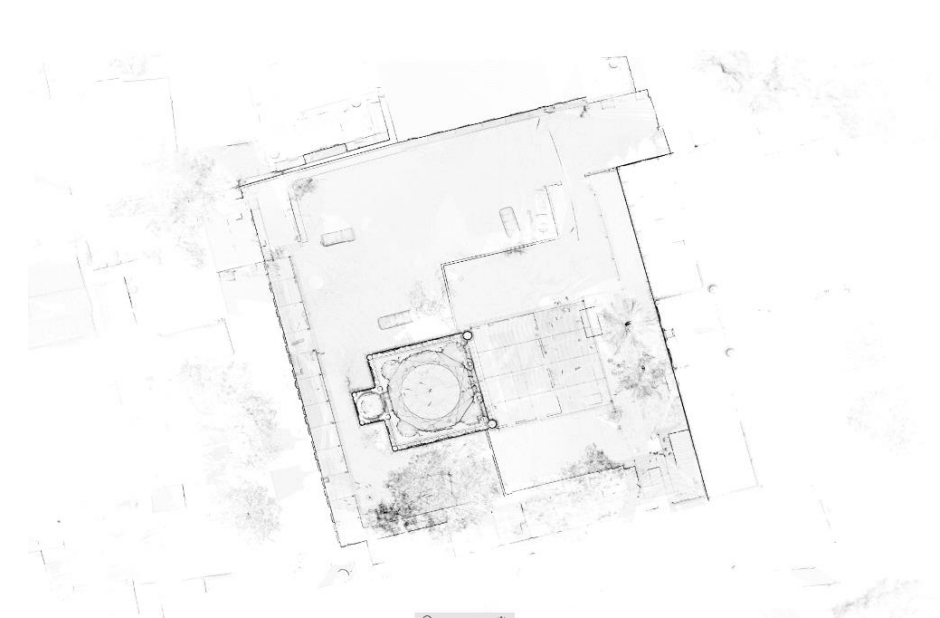
Geo – Coordinates:
Lat : 17.3291° N
Long : 76.8046° E



History

The Hrapur mosque and well were duly repaired. The minarets of the mosque had cracked in many places. Necessary repairs were done to the decaying parts. The Sarai attached to the mosque was also restored. Painting was done to the well; and the crevices that had appeared in its structure were filled in.

3D Point Cloud



16. Panchalingeshwara Temple

Place – Sedam

District : Kalaburagi
Taluk : Kalaburagi
Locality : Sedam

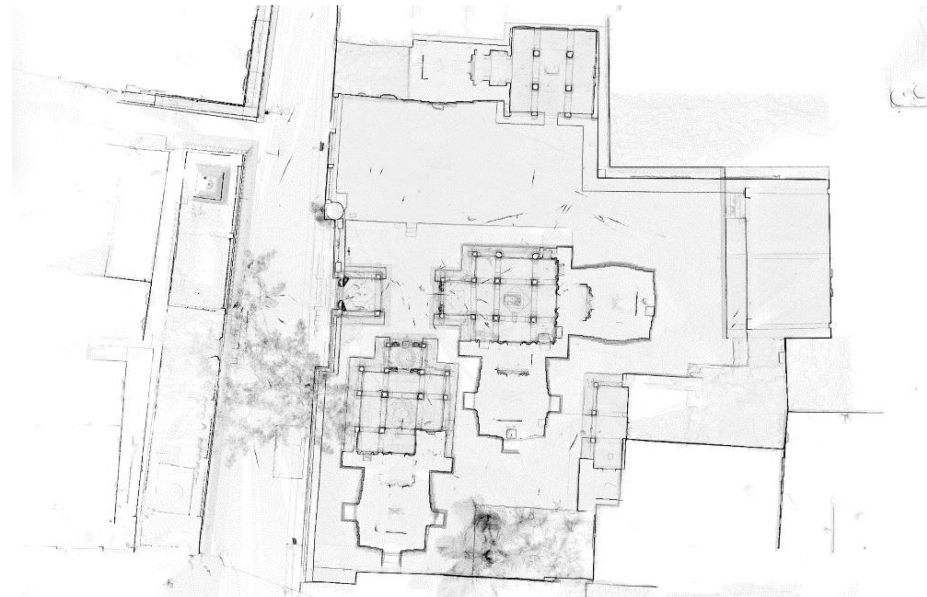
Geo – Coordinates:
Lat : 17.1779° N
Long : 77.2924° E



History

This small town today is known for the cement plant but it has its own history. Some of the ancient temples are Panchalingeshwara Gudi, Manvikeshwara Gudi and Bananti Kambha, Jain Basadi, Kottala Basaveshwara Gudi, Madhava Trilingeshwara Eshwara temple, Jwalamukhi statues, Ganapa Navakoti Narayana Temple, Karadagiri Hanuman Temple, Laxmi Narayan temple, Hingulambika temple and few mosques and Dargahs.

3D Point Cloud



17. Tomb of Qalandar Khan Place – Kalaburagi

District : Kalaburagi
Taluk : Kalaburagi
Locality : Sedam

Geo – Coordinates:
Lat : 17.3273° N
Long : 76.8290° E



History

Tomb of Qalandar Khan is in Sedam village of Kalaburagi District.

3D Point Cloud



18. Ramalingeshwara Temple Place – Hodal

District : Kalaburagi
Taluk : Aland
Locality : Hodal

Geo – Coordinates:
Lat : 17.5627° N
Long : 76.8355° E



History

This Temple is in Hodal village of Aland Taluk in Kalaburagi District

3D Point Cloud



19. Ramalingeshwara Temple

Place – Mogha

District : Kalaburagi
Taluk : Chincholi
Locality : Mogha

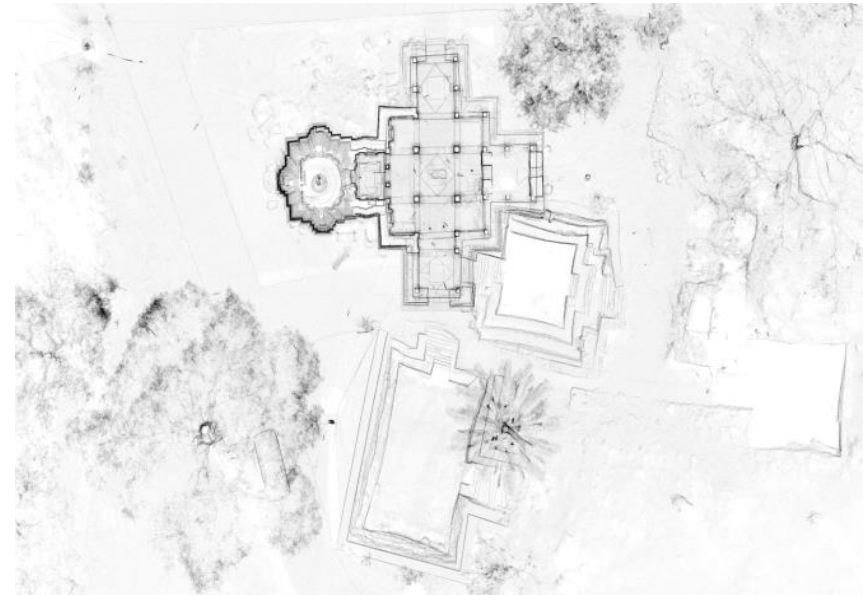
Geo – Coordinates:
Lat : 17.4457° N
Long : 77.2223° E



History

Ramalingeshwara Temple belongs to Kalyani chalukya period. This Temple has 3 small Kalyani s. 1st Kalyani s water is used only for god s pooja, 2nd & 3rd Kalyani's called as Embala gundi and Kyar gundi.

3D Point Cloud



**20. Shah Bazar Mosque
& Hummam**
Place – Kalaburagi

District : Kalaburagi
Taluk : Kalaburagi
Locality : Kalaburagi

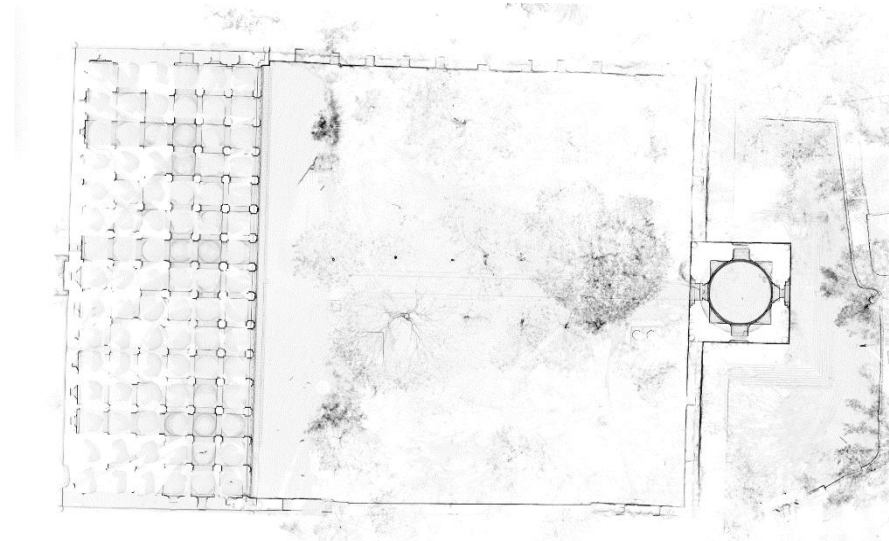
Geo – Coordinates:
Lat : 17.3498° N
Long : 76.8282° E



History



3D Point Cloud



21. Tomb of Allaudin Hasan
Gangu Bahumani
Place – Bahamanipur

District : Kalaburagi
Taluk : Kalaburagi
Locality : Bahamanipur

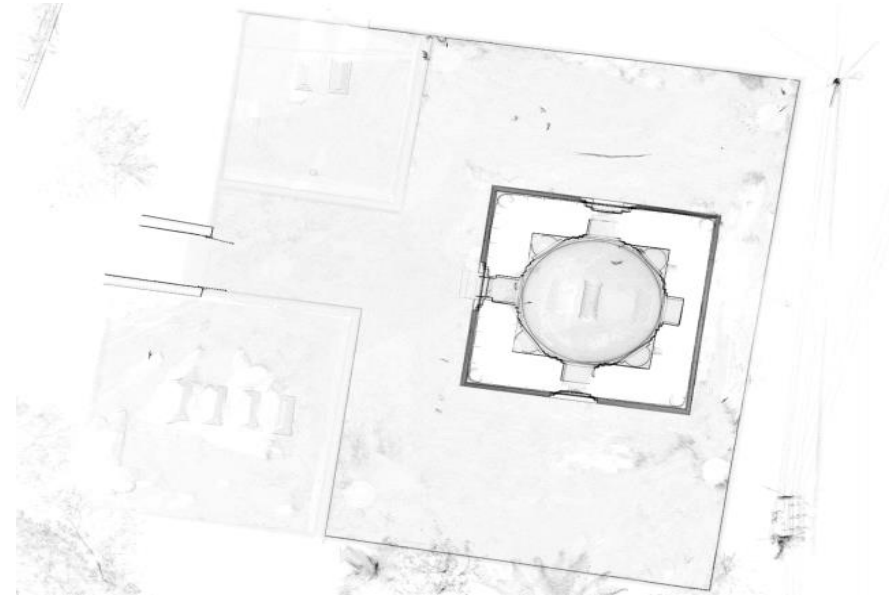
Geo – Coordinates:
Lat : 17.3443° N
Long : 76.8237° E



History

The tomb of All uddin in its architecture is not imposing enough for the tomb of a monarch. The plan of the building comprisk a square hall (about 12.3 sq.) built on a platform, which is about 1m high from the surrounding ground. The hall is crowned by a flat shaped dome of the Tughlaq type. The height of the walls from the platform is about 6.1 m and at the top turn or bordered by a parapet of arch-heads with ornamented finials at the four corners

3D Point Cloud



22. Tomb of Mohammad Shah I Place – Bahamanipur

District : Kalaburagi
Taluk : Kalaburagi
Locality : Bahamanipur

Geo – Coordinates:
Lat : 17.3458° N
Long : 76.8222° E



3D Point Cloud

History

The tomb of Mohammed Shah I is a replica of his father's tomb, except for open mosque attached to the west of the farmer's tomb. At the apex of the dome, the traces of a ruined finial of the Tughluq style may be seen, which is not to be found in the later tombs of the Deccan. The interior of the building is square in plan, measuring of about 8 m, each way. The walls, which are extremely thick – of about 2.4 m, near the base are built of irregular courses of masonry.

