

01. Channakeshwara temple

Place - Harnahalli

District : Hassan
Taluk : Arasikere
Locality : Harnahalli

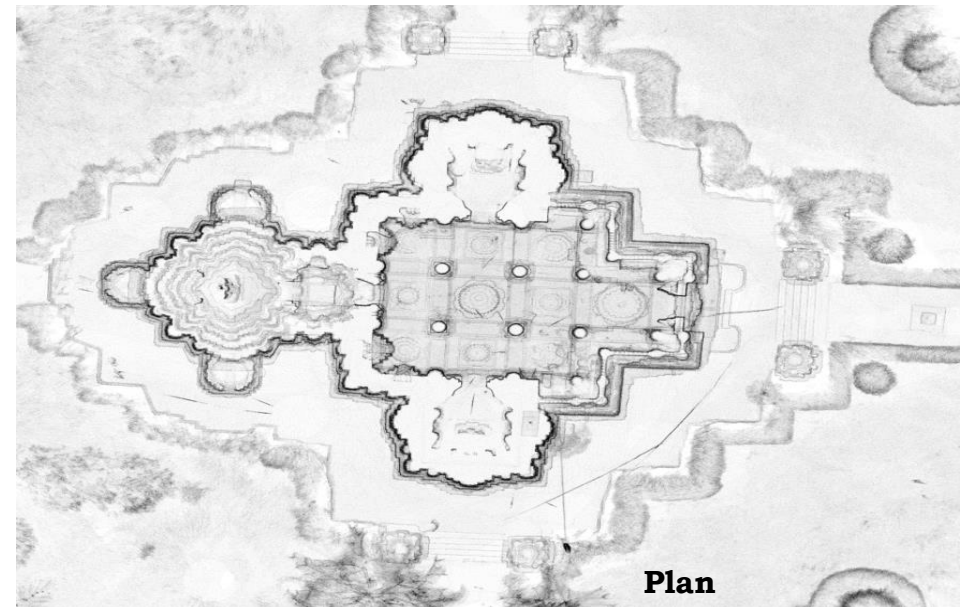
Geo - Coordinates:
Lat : 13.246911 °N
Long : 76.223783 °E



3D Point Cloud

History

The Chennakeshava temple is located at Harnahalli village in Arasikere taluk, Hassan district. The Chennakeshava temple also known as Lakshminarayana Temple is an excellent specimen of Hoysala architecture. This is the well preserved structure built by the three brothers, Pedda Heggade, Sovanna And Kesanna, is a triple-shrined structure. This temple is situated on a mound in the centre of the city. The temple was constructed around 1236. It has three star shaped Garbhagruha (sanctum sanctorum), all being connected to the Navagrahas. The carvings on outer wall are extremely beautiful. A stone Brindavan is in front of the temple. A Vijayanagara Style Laxmi Temple was built on the western side of the temple whose remains are visible.



Plan

02. Someshwara Temple

Place - Harnahalli

District : Hassan
Taluk : Arasikere
Locality : Harnahalli

Geo - Coordinates:
Lat : 13.247527 ° N
Long : 76.226275 ° E

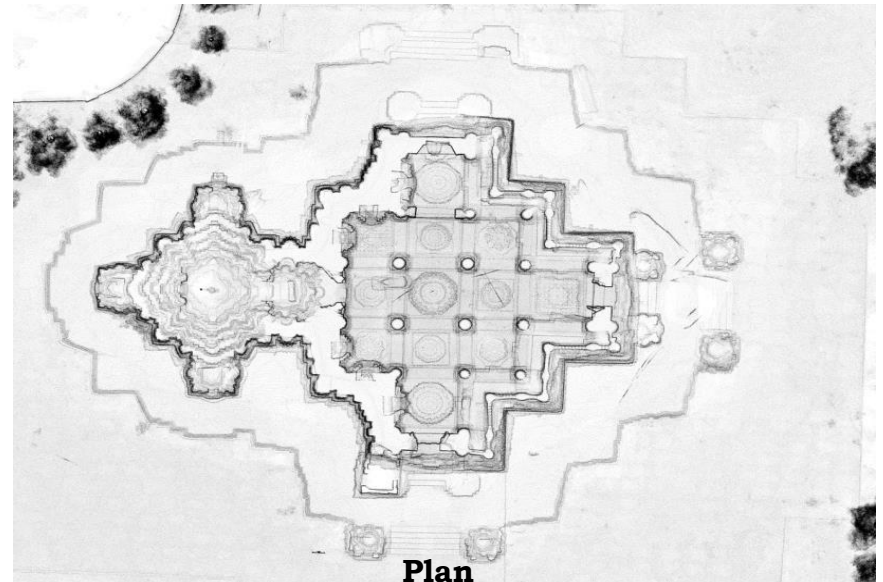


3D Point Cloud

History

The Someshwara temple is located at Harnahalli village in Arasikere taluk, Hassan district.

The temple, similar in workmanship to the Keshava temple, has one cell and 3 entrances. The main cell has a star-shaped exterior with outer and inner niches and is entered by a sukhanasi. The navaranga with 3 entrances has 6 towered niches. The temple has 3 flights of steps to the east, south and north, each flanked by a niched tower. The basement, with 5 cornices, has an animated elephant frieze. The images are predominantly Saiva in character. The soap-stone tower is composed of 4 tiers of ornamented turrets. The navaranga with 9 ankanas has 3 extensions to east, south and north. The lintels of all the 3 doorways have small Nataraja groups. The 4 central pillars of the navaranga are bell-shaped and the remaining 6 are star-shaped.



Plan

03. Lakshminarasimha Temple Place - Javagal

District : Hassan
Taluk : Arasikere
Locality : Javagal

Geo - Coordinates:
Lat : 13.301046 °N
Long : 76.059904°E



History

The Lakshminarasimha temple is located at Javagal village in Arasikere taluk, Hassan district.

The Lakshminarasimha temple is a triple-shrined temple. It houses the sculpture of Kesava in the main shrine, Gopala to the right and Lakshminarasimha to the left shrines. Although placed in a subsidiary shrine, Lakshminarasimha is regarded as the main deity. This Vishnu temple comprises figures of Ganesha and Mahishamardini in the niches by the side of the main shrine. The mukhamantapa, the granite mahadvara and the Lakshmi temple constitute the additions of the main temple. The navaranga doorway bears on its lintel, dvarapalas and Kaliyamardana. The south cell contains a 6' high image of Venugopala, while the north cell has the image of Lakshminarasimha on a Garuda pedestal, with garuda carved in front. The sanctum has a lotus dome carved out of a single slab. The image of Vishnu as Sridhara stands on a pedestal with garuda carved in front. The mahadvara about 18' high and 7' wide, made up of granite slabs, is typical of Vijayanagar period construction.

3D Point Cloud



Plan

04. Channakeshwara temple

Place - Hullekere

District : Hassan

Taluk : Arasikere

Locality : Hullekere

Geo - Coordinates:

Lat : 13.191033°N

Long : 76.366088°E

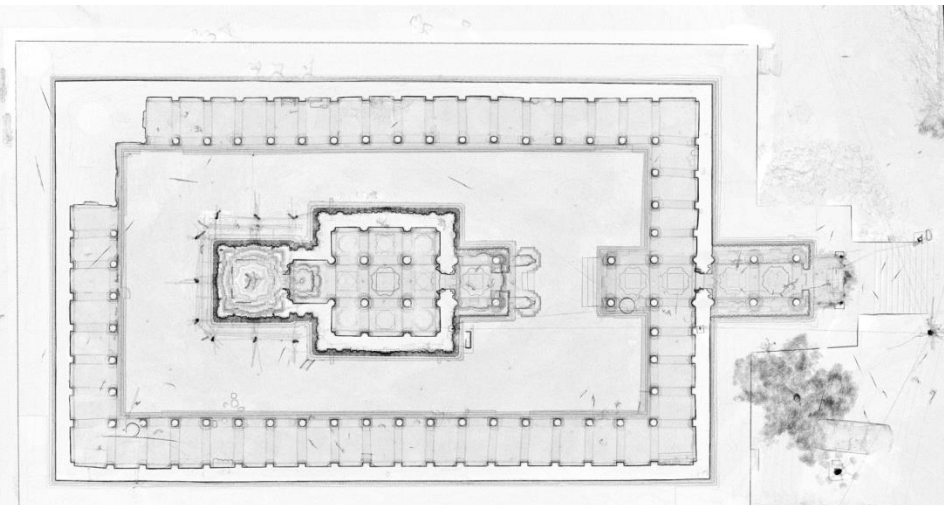


History

The Chennakeshava temple is located at Hullekere village in Arasikere taluk, Hassan district.

The Chennakeshava temple, has a sanctum over which is a tower, an open sukhanasi, a navaranga, a porch and cloistered verandas. The temple, built by Buchiraja, has a square porch and a garbhagriha and is built on a floating foundation. The walls, with turreted pilasters and canopies are enclosed in scroll toranas. They are of the stepped pyramid design. The Vishnu images on the walls are 15" high. The soap-stone tower rises in 3 tiers of ornamented turrets. The sikara is surmounted by a stone Kalasa (finial) around. The navaranga of 9 ankanas has 4 bell shaped pillars. The garbhagriha contains a 6' high image of lord Keshava standing on a pedestal with Garuda carved in front. The image is flanked by Sridevi and Bhudevi. The ten incarnations of Vishnu are depicted on the prabhavali.

3D Point Cloud



Plan

05. Mahalingeshwara temple

Place - Mavuthanahalli

District : Hassan

Taluk : Arasikere

Locality : Mavuthanahalli

Geo - Coordinates:

Lat : 13.317992 ° N

Long : 76.123525 ° E



3D Point Cloud

History

The Mahalingeshwara temple is located at Mavuthanahalli village in Arasikere taluk, Hassan district.

The Mahalingeshwara temple, a Trikutachala, comprises 3 shrines housing the images of Harihara, Narasimha and the main deity Mahalingeshwara, also called Sri-Ballala-Harihara-Narasingeswara. This small structure has an artistic interior with elegantly executed ceiling panels. Several of the panels are in the form of lotuses with their petals arranged in beautiful colours, which despite time lapse have not faded. Among the well-carved images are the figures of Ganesha, Mahishasuramardini and Kartikeya. Another notable feature is that although the temple is dilapidated the images in it are intact.



Plan

6. Groups Samadhi Place – Arasikere

District : Hassan
Taluk : Arasikere
Locality : Arasikere

Geo – Coordinates:
Lat :
Long :

Not Traced

History

The

3D Point Cloud

07. Rameshwara temple

Place - Ramanathapura

District : Hassan

Taluk : Arkalgud

Locality : Ramanathapura

Geo - Coordinates:

Lat : 12.607148° N

Long : 76.089209° E

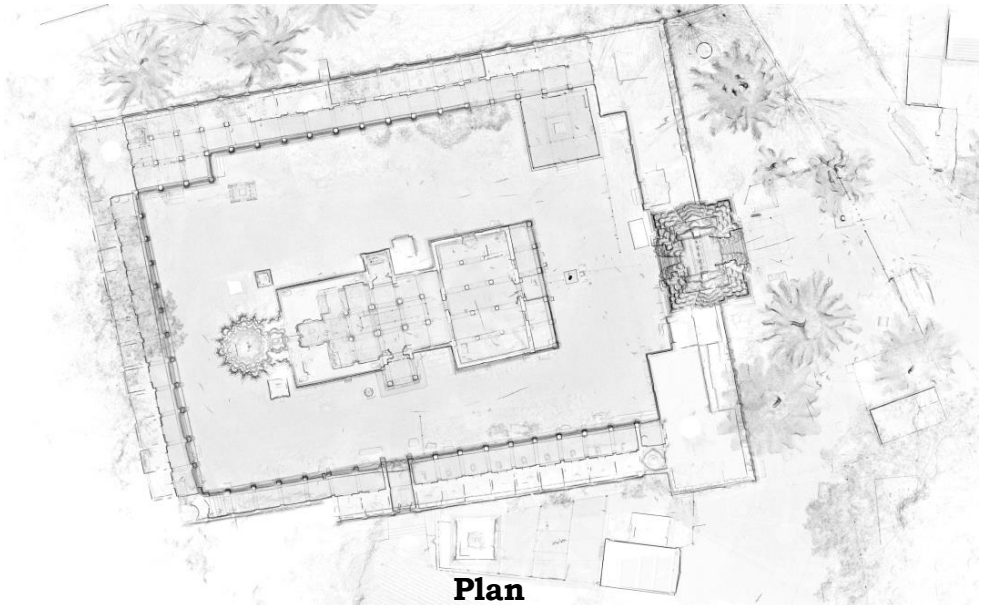


3D Point Cloud

History

The Rameshwara temple is located at Ramanathapura village in Arakalgudu taluk, Hassan district.

This temple is a star shaped single shrined structure. It has a Vesara Sikhara. The temple Consists of the Garbhagriha, A sukhanasi and Mahamantapa. The Hoysala Structure has some additions like another hall and Mukhamantapa, Prakara, Gopura added during Vijayanagara period. The temple is simple structure without decorations. Navaranga and Mahamantapa are also simple in executions. The outer wall consists of only ardhakamba and blank Koshtas. On the Sukhanasi, Hoysala Crest is found.



Plan

08. Lakshmaneshwara Temple

Place - Mallarajupatna

District : Hassan

Taluk : Arkalgudu

Locality : Mallarajupatna

Geo - Coordinates:

Lat : 12.606521 ° N

Long : 76.087971 ° E

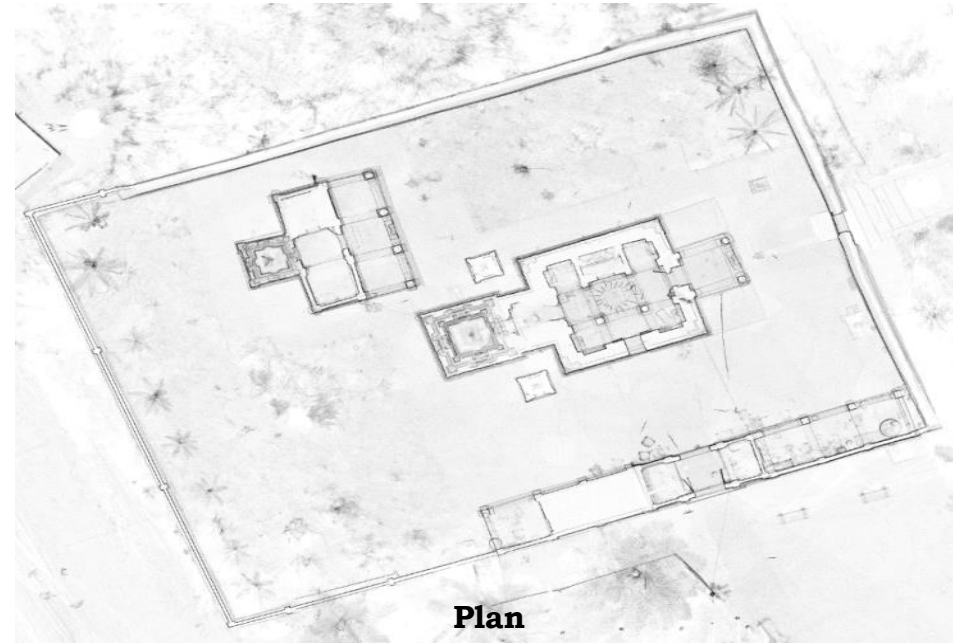


3D Point Cloud

History

The Lakshmaneshwara temple is located at Mallarajupatna village in Arakalgudu taluk, Hassan district.

The temple is built on the Bank of River Kaveri. The temple is of granite, brick work. The temple consists of girbhagriha enshrining a linga. Sukhanasi and Navaranga, a small porch is also built. The pillars of the temple and porch are cylindrical and lathe turned capitals are also seen. The outer walls have the carved panels of sculptures viz., Venugopala, Ramayana themes; Dancing Ganapati etc. The temple is in much dilapidated condition.



Plan

09. Veerabhadra Temple Place - Halebeedu

District : Hassan
Taluk : Belur
Locality : Halebeedu

Geo - Coordinates:
Lat : 13.22045° N
Long : 75.99207° E

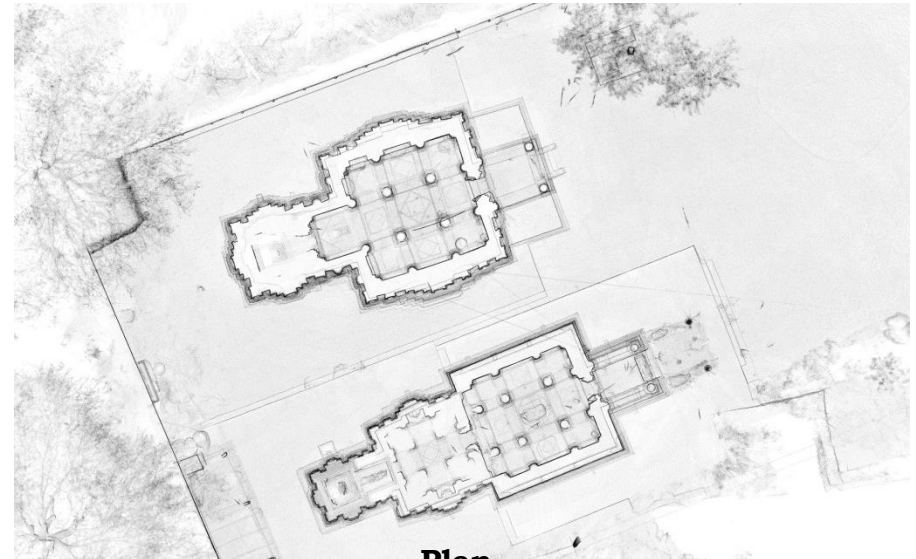


History

The Veerabhadra temple is located at Halebeedu village in Beluru taluk, Hassan district.

The Virabhadra temple is a small structure with a stone tower and the Hoysala crest. The entrance comprises a frieze of 56 large figures each about 3D" high, on the outer walls of the sanctum and sukhanasi. The inner navaranga along with sukhanasi and garbhagriha belongs to the Hoysala period, while the outer one is an addition made during the Vijayanagar Period. The inner navaranga is only 5' high with 2 side niches. In the south niche is a seated image of Shaiva Saint in yogamudra. The chief deity Virbhadra is a 6' high image standing with sword, trident, drum and shield. The torana is of the same stone as the image. It is a composite of floral and Makara. In place of the simhalalata is found a Kirtimukha with a skull. The tower is of the stepped pyramid kind. The Nandi in the outer navaranga belongs to the late Vijayanagar period.

3D Point Cloud



Plan

10. INSCRIPTIONS

Place - Halebeedu

District : Hassan

Taluk : Belur

Locality : Halebeedu

Geo - Coordinates:

Lat : 13.220573 ° N

Long : 75.9921080 ° E

INSCRIPTIONS inside Virabhadra Temple, Halebeedu

History

The inscriptions found in the Veerabhadra temple which is located at Halebeedu village in Beluru taluk, Hassan district. The Hoysala inscriptions written in either old-Kannada or Sanskrit are engraved on stone and are located near the temple, they are labels on the pedestals of sculpted images. The most famous Hoysala inscriptions recording details about the artists are the labels found in the Chennakeshava temple, Belur, during Vishnuvardhana's reign. They vary in length, from one word to a complex sentence. However, later ones mention only the first letter or an abbreviation of the name as seen in Kedareshvara temple at Halebid, etc. Dedicatory inscriptions on large freestanding stones set up to the south east of many temples, contain valuable information about the chief architects and sculptors. Unlike dedicatory inscriptions, the label inscriptions lack precise date pose a difficulty in establishing chronology. The craftsman's sense of pride in his skill and his desire to excel as a mark of devotion for the deity is common to all the inscriptions.

3D Point Cloud

Plan

11. Chatteshwara temple

Place - Chatachatanahalli

District : Hassan
Taluk : Belur
Locality : Chatachatanahalli

Geo - Coordinates:
Lat : 13.231380°N
Long : 76.024586° E

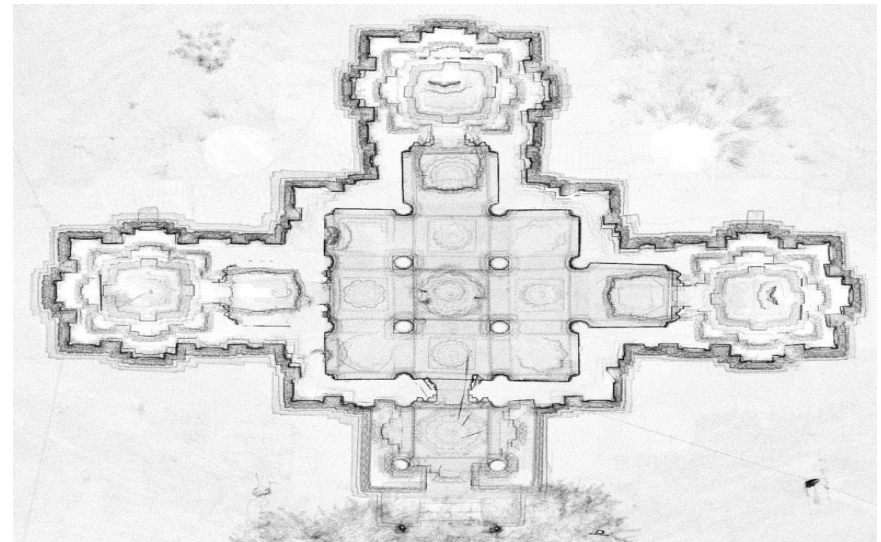


History

The Chatteshwara temple is located at Chatachatanahalli village in Beluru taluk, Hassan district.

The temple contains 3 squarish cells with a figure of Vishnu in the east shrine, Surya in the south shrine and the Linga in the north shrine. Each cell comprises a sukhanasi with screens on either side. The temple, constructed by Chattadanayaka, a Hoysala officer, is built on a floating foundation over which rises the basement with 5 cornices. The eaves, like the outer walls, are all plain with small square pilasters set in at the corners. The parapet is composed of a series of ornamented turrets on the dentil projections and sikharas. The porch is entered by a flight of steps flanked by turreted niches. The navaranga doorway is flanked by door guardians and Gajalakshmi on the lintel. The navaranga with 9 ankanas has a decorative srichakra in high relief. In the garbhagriha of the east cell is the sculpture of Surya installed as one of the principle deities. Similarly the sanctum temple houses a linga.

3D Point Cloud



Plan

12. Lakshminarayana Temple

Place - Anathi

District : Hassan

Taluk : Channarayapatna

Locality : Anathi

Geo - Coordinates:

Lat : 13.139613° N

Long : 76.433554° E



History

The Lakshminarayana temple is located at Anathi village in Channarayapatna taluk, Hassan district.

The temple is a simple structure with a garbhagriha, sukhanasi, navaranga, mantapa and an enclosed jagali on either side of the central doorway. The ceilings over the garbhagriha and sukhanasi, like the central ceiling of the navaranga, are well-carved. Of these, the ceiling in the sukhanasi divided into 9 panels, is considered to be the best. The central panel has an image of Lakshminarayana, while the other panels bear floral motif. There are 2 dwarapalas guarding the entrance of the sukhanasi. An image of garuda decorates the lintel of the entrance to the sanctum. Above the lintel is a Narasimha image carved in relief, flanked by garuda and Prahlada.

3D Point Cloud



Plan

13. Shanthinatha Basadi

Place - Jinanathapura

District : Hassan

Taluk : Channarayapatna

Locality : Jinanathapura

Geo - Coordinates:

Lat : 12.86561 ° N

Long : 76.488283 ° E

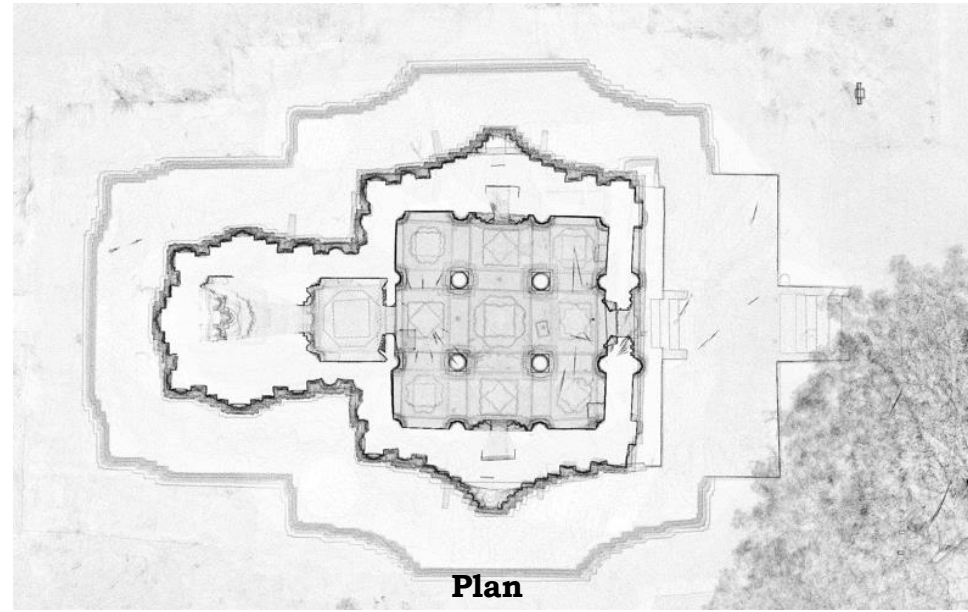


History

The Shanthinatha Basadi is located at Jinanathapura village in Channarayapatna taluk, Hassan district.

The Shantinatha Basadi, consisting of a garbhagriha, a sukhanasi and a navaranga, is unique. On the outer walls of the temple are images of Jinas, Yaks, and Yaksinis, which is a rare feature in Jain temples. The 5 1/2' high image of Shantinatha, with prabhavali, is flanked by male chauri bearers. The navaranga, with 4 elegantly carved pillars, is adorned with festoon decoration. The outer walls, surmounted by beautiful turrets and scrolls, are remarkable for their ornamentation.

3D Point Cloud



Plan

14. SINGESHWARA TEMPLE

Place - HEBBALU

District : Hassan

Taluk : Channarayapatna

Locality : Hebbalu

Geo - Coordinates:

Lat : 12.98395° N

Long : 76.50005° E



3D Point Cloud

History

The Singeshwara temple is located at Hebbalu village in Channarayapatna taluk, Hassan district.

The Singeshwara Temple was built by the minister of Ballala-II in 1200 AD. The temple is situated on the bank of village tank. It is a trikutachala temple. Consisting three girbhagrihas, a sukhanasi and Navaranga. The mukhamantapa on the southern entrance. The temple is in dilapidated condition. Though the temple is non-ornate one, contains simple and fine architecture features.



Plan

15. Veerabhadra Temple Place – Golenahalli

District : Hassan
Taluk : Holenarasipura
Locality : Golenahalli

Geo – Coordinates:
Lat :
Long :

Not Traced

History

The

3D Point Cloud

16. Narasimha Temple

Place - Holenarasipura

District : Hassan
Taluk : Holenarasipura
Locality : Holenarasipura

Geo - Coordinates:
Lat : 12.782644 ° N
Long : 76.241535 ° E



UNDER RENOVATION

History

The Lakshminarasimha temple is located at Holenarasipura Town in Holenarasipura taluk, Hassan district.

The Lakshminarasimha temple is a trikutachala. It has a Mahadwara with a lofty gopura, a Patalankana and several shrines. In the inner navaranga is found the image of Venkatappa Nayaka, who built the temple. The outer Navaranga constructed with heterogeneous materials has 4 soapstone pillars and several indented square pilasters. This triple shrine temple houses the image of Nambinarayana in the West shrine followed by Gopalakrishna in the south shrine and Lakshminarasimha in the north. Despite occupying a subsidiary cell, Lakshminarayana is considered the chief deity. The navaranga, with 3 entrances, has a carved central ceiling. It also has granite pillars in a novel design along with octagonal shafts. In the Sukhanasi, with pierced stone windows, are kept the processional images of Rama, Lakshmana and Sita. The Garuda pillar is facing South east and the Prakara comprises shrine of the temple goddess, Prasannakamala.



17. Someshwara Temple

Place - Honnavara

District : Hassan

Taluk : Holenarasipura

Locality : Honnavara

Geo - Coordinates:

Lat : 12.739483 ° N

Long : 76.256863 ° E



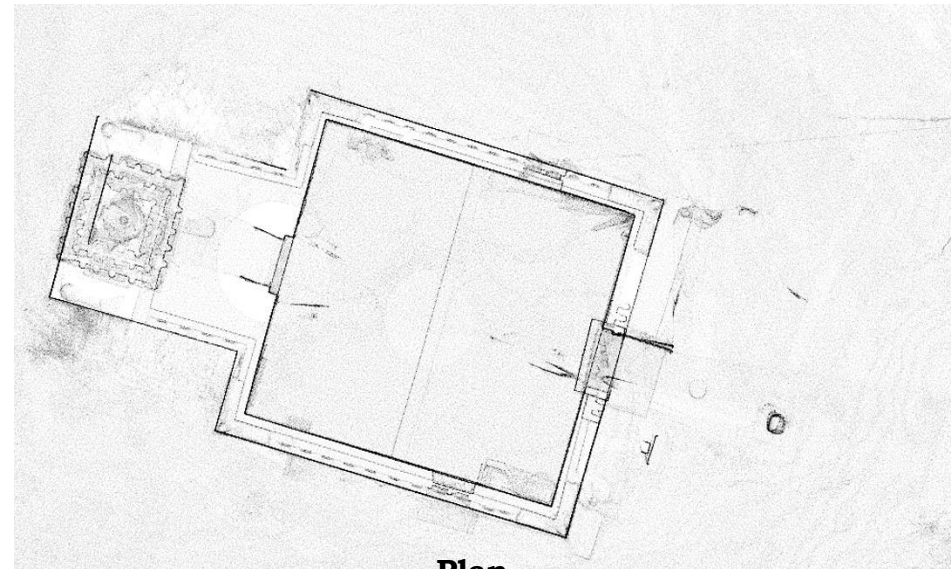
History

The Someshwara temple is located at Honnavara village in Holenarasipura taluk, Hassan district.

Honnavara is a small Village/hamlet in Holenarsipur Taluk in Hassan District of Karnataka State, India. It comes under Honnavara Panchayath. It belongs to Mysore Division . It is located 36 KM towards South from District head quarters Hassan. 171 KM from State capital Bangalore

Honnavara is surrounded by Arkalgud Taluk towards west, Krishnarajpet Taluk towards East, Krishnarajanagara Taluk towards South, Channarayapatna Taluk towards North.

3D Point Cloud



Plan

18. Keshava Temple

Place – Honnavara

District : Hassan

Taluk : Holenarasipura

Locality : Honnavara

Geo – Coordinates:

Lat : 13.121933 ° N

Long : 76.176317 ° E

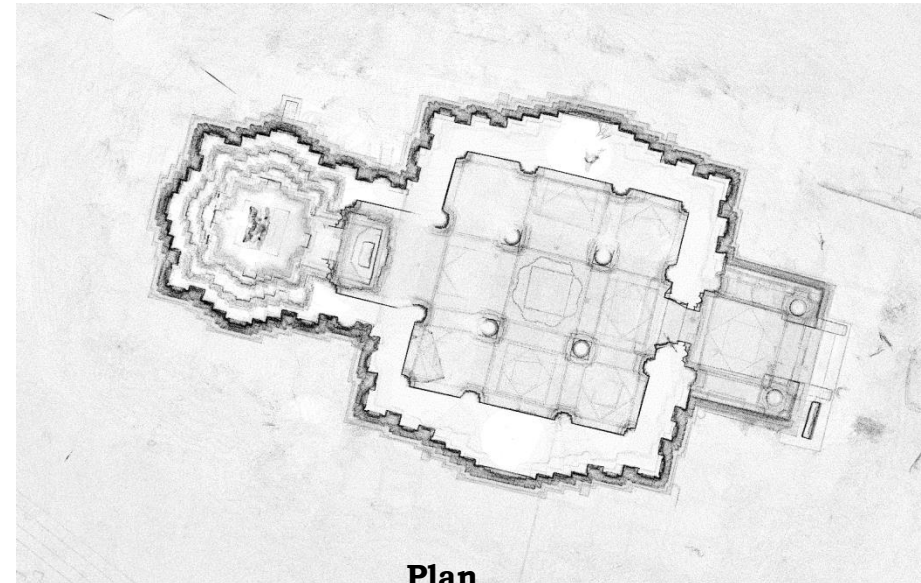


History

The Keshava temple is located at Honnavara village in Holenarasipura taluk, Hassan district.

The Kesava temple consists of a garbhagriha, an open sukhanasi, a navaranga and a porch, approached by a flight of steps. The outer walls are raised on a basement of 6 cornices with dentil mouldings. The walls with right-angled pilasters have carved turret-bearing shallow niches, which enshrine gods. The navaranga doorway is flanked by two door guardians. The bell-shaped central pillars are lathe-turned ones. The central ceiling consists of a well-worked octagon and square, divided into 9 panels. The garbhagriha door jambs of the sanctum have vertical bands of scroll and Medallion ornamentation. The 6' high image of lord Kesava, on a pedestal with garuda stands in samabhanga. The ten incarnations of Vishnu are carved on the torana.

3D Point Cloud



Plan

19. D. C. House

Place - Hassan

District : Hassan
Taluk : Hassan
Locality : Hassan Town

Geo - Coordinates:
Lat : 13.00147 ° N
Long : 76.103005°E



History

The DC's official Residential building is a heritage building which is a protected monument located in Hassan town in Hassan district.

3D Point Cloud



Plan

20. Govindeshwara temple

Place - Koravangala

District : Hassan

Taluk : Hassan

Locality : Koravangala

Geo - Coordinates:

Lat : 13.053965 N

Long : 76.176958 E

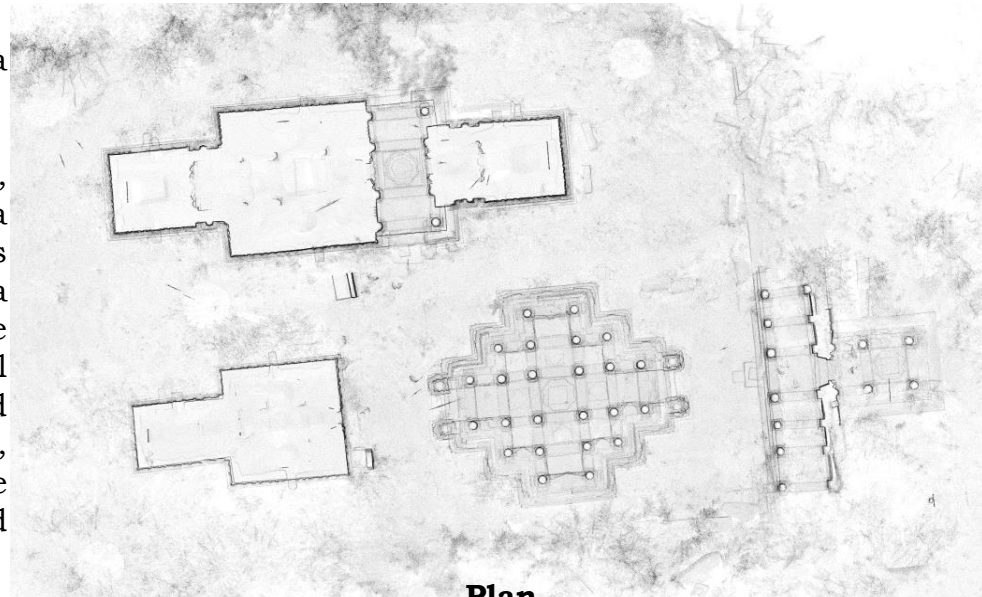


3D Point Cloud

History

The Govindeshwara temple is located at Koravangala village in Hassan Taluk and District.

The Govindeshwara temple, erected by Govindaraja, minister of Hoysala Narasimha I, consists of a garbhagriha, a sukhanasi and a navaranga of 9 squares or ankanas. The entrance to the navaranga is through a porch with entrances from north and south. The Govindeshwara shrine has a ruined dome with octagonal ribs. The ornamented outer walls contain designed turrets borne on single or double pilasters. The porch, built in 1180 (inscription Hassan 74) has an ornate ceiling with Mahishamardini surrounded byashtadikpalas.



Plan

21. Nageshwara Temple

Place - Koravangala

District : Hassan
Taluk : Hassan
Locality : Koravangala

Geo - Coordinates:
Lat : 13.054028 ° N
Long : 76.176907 ° E

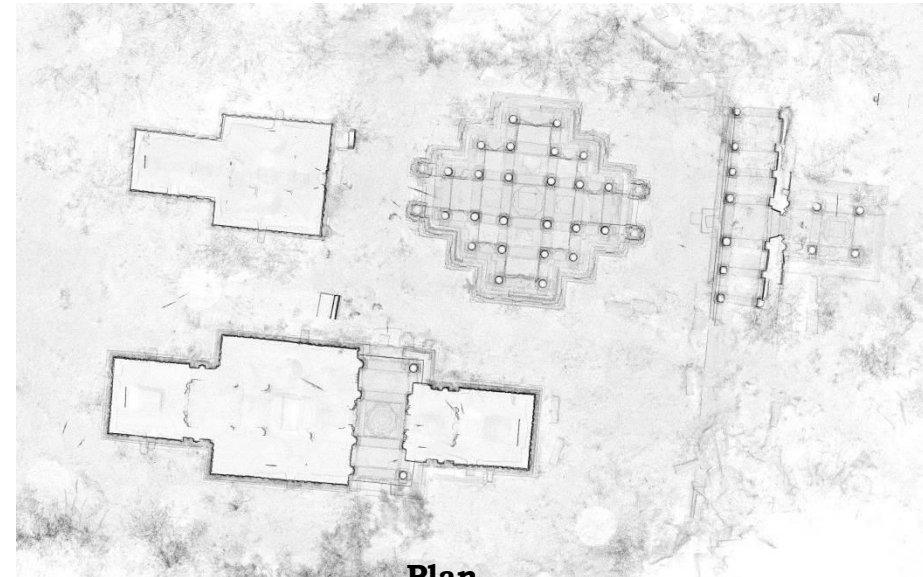


History

The Nageshwara temple is located at Koravangala village in Hassan Taluk and District.

The Nageshwara temple and the Govindeshwara temple are twin temples. Though ornate it is smaller in size and much plainer than the Bucheshwara temple. Nageshwara temple erected by Nakimayya during the reign of Hoysala Narasimha I, consists of a garbhagriha, an open sukhanasi, a navaranga, a porch and a mukhamantapa. The navaranga has a fine doorway with two pierced square windows and 24 bell-shaped pillars. Among the carved ceilings, the central one bears the figure of Nataraja surrounded by musicians. The ceiling of the porch is a grand piece of workmanship. The outer walls showing single or double pilasters are surmounted by turrets.

3D Point Cloud



Plan

22. Keerthinarayana temple

Place - Heragu

District : Hassan

Taluk : Hassan

Locality : Heragu

Geo - Coordinates:

Lat : 13.055783°N

Long : 76.266855°E

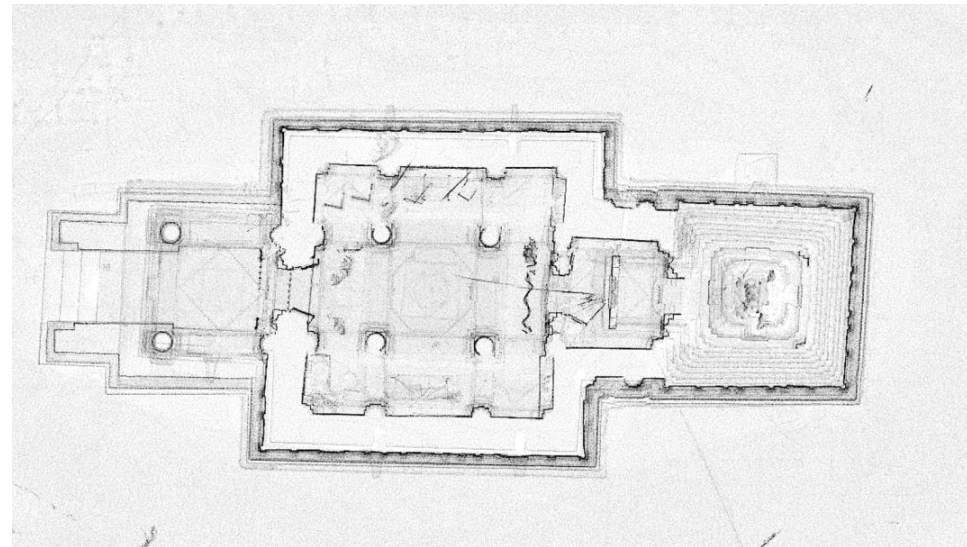


3D Point Cloud

History

The Keerthinarayana temple is located at Heragu village in Hassan Taluk and District.

It is also called Jaitanarayana is the most important. The temple consists of a garbhagriha, sukhanasi, navaranga and the porch. The image, about 7', 6" high stands on a pedestal with Garuda carved on it. It holds a lotus, and a mace along with a Chakra and Shankha in the two fire arms. The Lord is flanked by Sridevi and Bhudevi. The ten incarnations of Vishnu is carved on the Prabhavali. The processional image holds a Shankha and Chakra along with a mace in the forearm. This Hoysala temple with plain straight outer walls and a step-like tower of uncarved blocks has a fine Kalasa (finial) In front of the tower above the Sukhanasi ceiling is an ornate figure of Garuda. The well-carved Navaranga ceilings contain the figures of Nammalvar, Bhashyakara and Ganesha. The lintel in the Garbhagudi bears the figure of Narayana while the Sukhanasi lintel has Kaliyamardhana, and the Navaranga lintel bears Venugopal



Plan

23. Yoganarasimha Temple Place - Mudigere

District : Hassan
Taluk : Hassan
Locality : Mudigere

Geo - Coordinates:
Lat : 13.0947 ° N
Long : 76.2448 ° E

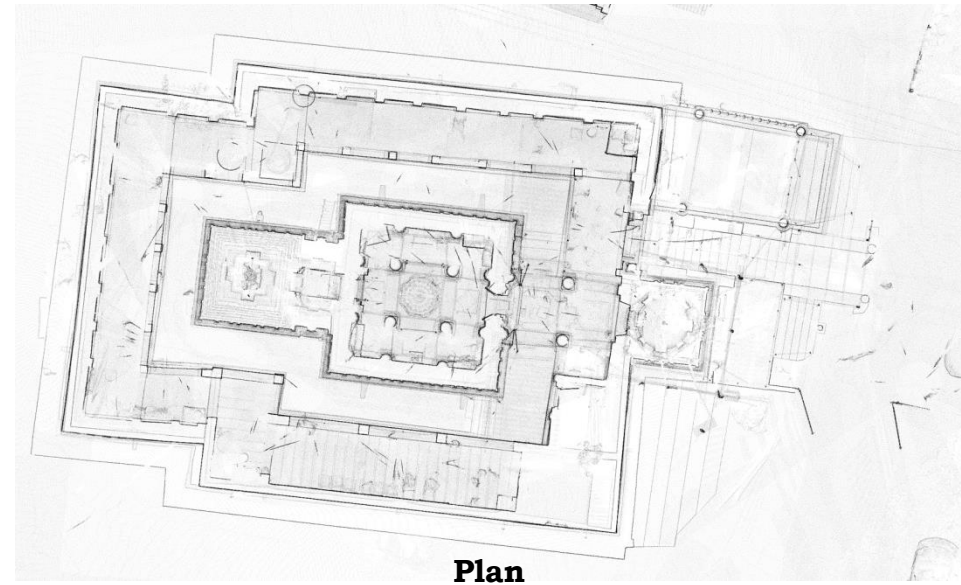


History

The Yoganarasimha temple is located at Mudigere village in Hassan Taluk and District.

This is a homogenous structure consisting of a garbhagriha, a navaranga, a sukhanasi and a porch with a prakars. The outer walls of the temple, relieved by thin right-angled pilasters, have been raised on a basement consisting of cornices. The straight and short eaves also have dentil mouldings. The tower in the form of a stepped pyramid with decorated cornices is surmounted at the top by a stone finial. The two front pillars of the porch are bell-shaped. The sukhanasi doorway is flanked by perforated screens. The sukhanasi ceiling is set in the shape of an octagon. The well carved doorway of the sanctum has a Gajalakshmi panel on the the lintel. Further the sanctum contains the gracefully seated 6' high image of Yoganarasimha on a pedestal, with garuda carved in front.

3D Point Cloud



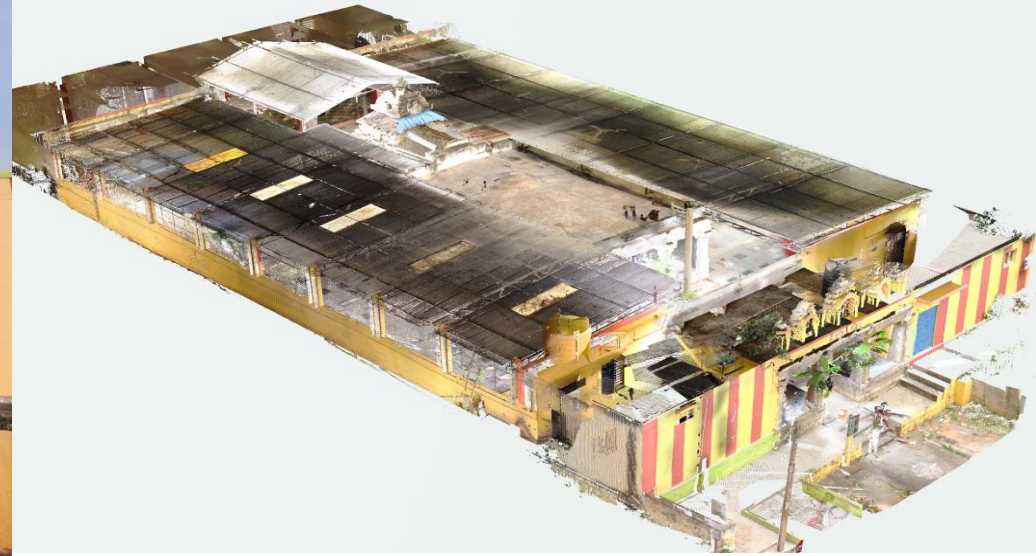
Plan

24. Prasanna Chennakeshava Temple

Place - Ambuga

District : Hassan
Taluk : Hassan
Locality : Ambuga

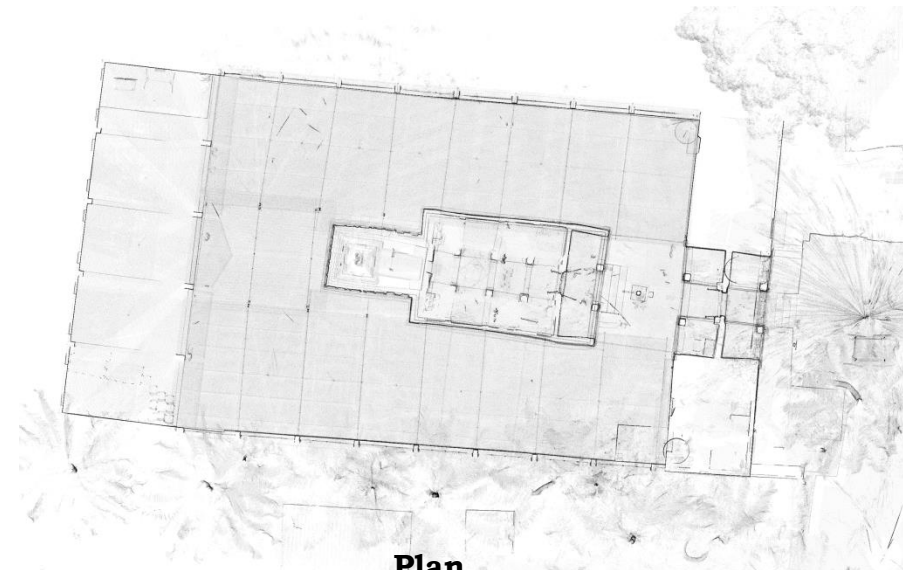
Geo - Coordinates:
Lat : 12.92726° N
Long : 76.145413° E



History

The Prasanna Channakeshava temple is located at Ambagu village in Hassan Taluk and District. This temple is a small structure. It consists of a garbhagriha, a sukhanasi and a navaranga with a verandah in front. The image of Yoganarasimha placed in a small niche is in the navaranga, to the left of the sukhanasi doorway. The 4' high main image of Chennakeshava holding a conch, discus, lotus and mace is on a pedestal in the garbhagriha. The temple which is comes under Muzrai department which is having an Inam of about 15 acres

3D Point Cloud



Plan

25. Vishnu Temple

Place - Kondajji

District : Hassan

Taluk : Hassan

Locality : Kondajji

Geo - Coordinates:

Lat : 13.118940° N

Long : 76.066018° E

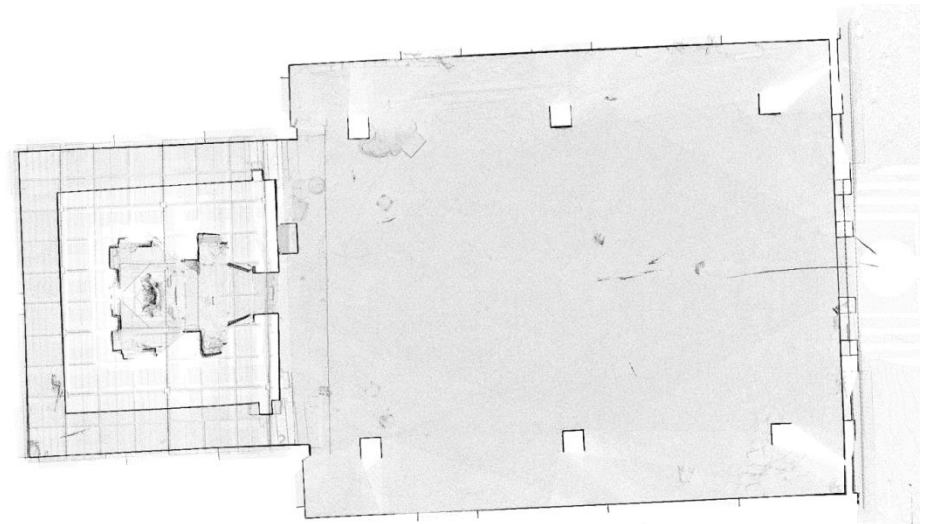


3D Point Cloud

History

The Vishnu temple is located at Kondajji village in Hassan Taluk and District.

The Varadaraja image in the Vishnu temple represents four-armed standing Vishnu as the savior of King elephant, which prayed to him when he was caught by the crocodile. It is carved out of dolerite rock. Standing in Samabhanga posture on a lotus pedestal, the image carries discus in the right hand and conch in the left. What distinguishes this image & from the Vishnu image at Maddur is its massiveness and height, measuring roughly 5 Mts.



Plan

26. Trikuteshwara Temple

Place - Gorur

District : Hassan

Taluk : Hassan

Locality : Gorur

Geo - Coordinates:

Lat : 12.823137 ° N

Long : 76.067785 ° E

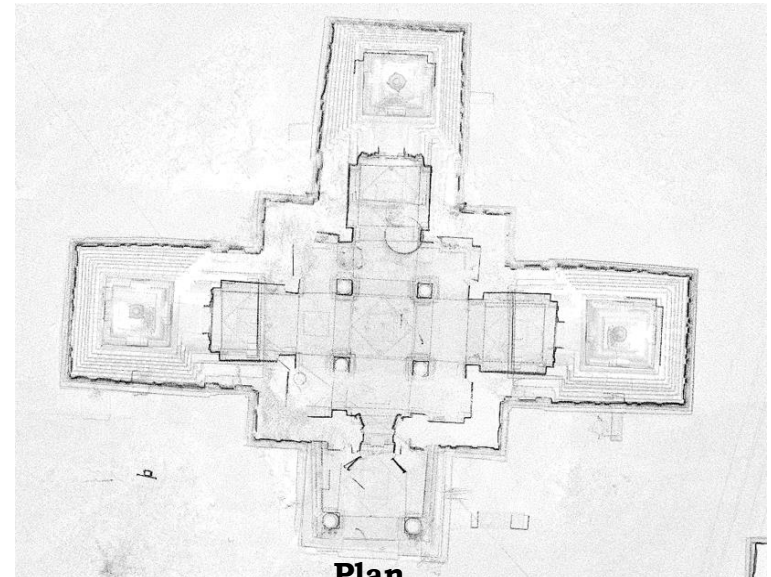


History

The Trikuteshwara temple is located at Goruru village in Hassan Taluk and District.

The Trikuteshwara temple is a typical Hoysala building with 3 garbhagrihas, 3 open sukhanasis, common navaranga of 9 ankanas and an open porch. The trikuta lingas were installed by Vijayaditya-Heggade during the reign of Narasimha I. The decorative walls with angular pilasters bear bell-shaped mouldings. The three towers, square in plan and formed of stepped dentil cornices, are plain. The porch has 2 cylindrical pillars with wheel mouldings on top; while the 4 pillars of the navaranga have cubical mouldings with 16 fluted shafts. The lintel of the navaranga entrance has dancing Shiva. The ceilings are either flat or shallow carved domes. The ceilings of the 3 sukhanasis and the garbhagriha have fine designs. The images of Ganesha and Mahishamardini, a mutilated Surya and Saptamatrika panel are lintel in the navaranga. The garbhagriha bears the lakshmi lintel. The lingas in all the 3 garbhagrihas are of natural stone.

3D Point Cloud



27. Rangaswamy Temple

Place - Markuli

District : Hassan

Taluk : Hassan

Locality : Markuli

Geo – Coordinates:

Lat :

Long :

Not Traced

History

Rangaswamy temple is a small Hoysala structure, has threekuta shrines. Constructed in 1173 AD by Buchimayya, Dandanayaka of Ballala II. The Temple has three garbhagrihas, sukhanasis and a navaranga. The central shrine facing to the east, while other two towards the north and south. The temple is a simple non ornate type. Consisting the Panjara and Koshtas on the wall. Navaranga has nine ankanas having decorated ceilings. The shikaras are typical Dravida and Kadambanagara type. The chief deity of the temple is Adideva or Adishwara in seated posture.

3D Point Cloud

28. Parshvanatha Basadi

Place - Markuli

District : Hassan
Taluk : Hassan
Locality : Markuli

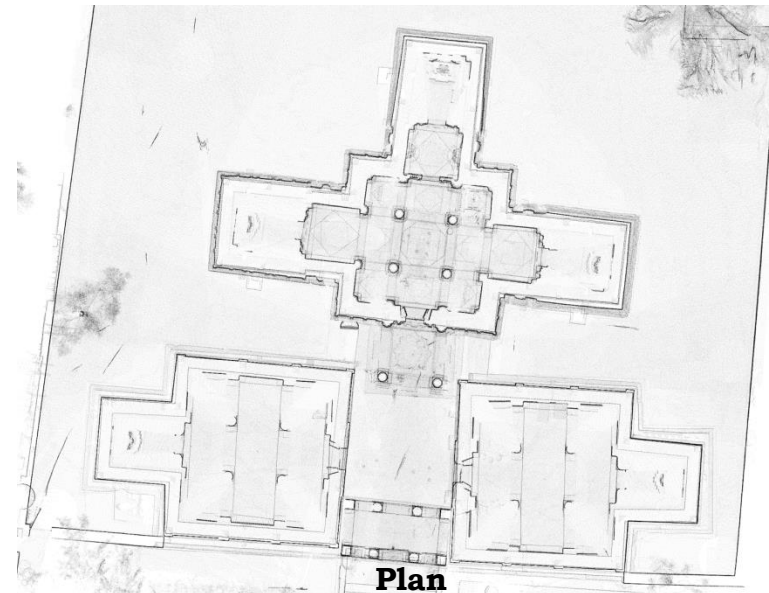
Geo - Coordinates:
Lat : 12.928077 ° N
Long : 76.186713 ° E



History

The Parshvanatha Basadi was erected by Buchimayya, minister of Ballala Deva located in Markuli village in Hassan Taluk and District. This trikutachala temple consists of 3 garbhagrihas, 3 sukhanasis, a navaranga and a porch. It has a high enclosure wall with a gateway, reached by a flight of steps. Each of the 3 shrines in the main temple measures 8'x7'. The sukhanasi before the east and west cells is open, while that in front of the south cell is closed by two perforated screens. The central ceiling of the navaranga in the main shrine is flat. The main shrine on the south contains a 5' high seated figure of Adinatha in the lotus posture. There is a prabhavali behind the image. In the east shrine is the 6' high standing image of Bahubali. Likewise, the west shrine contains a 5' high standing image of Parsvanatha.

3D Point Cloud



Plan

29. Bhoga Narasimha Temple

Place - Shanthigrama

District : Hassan

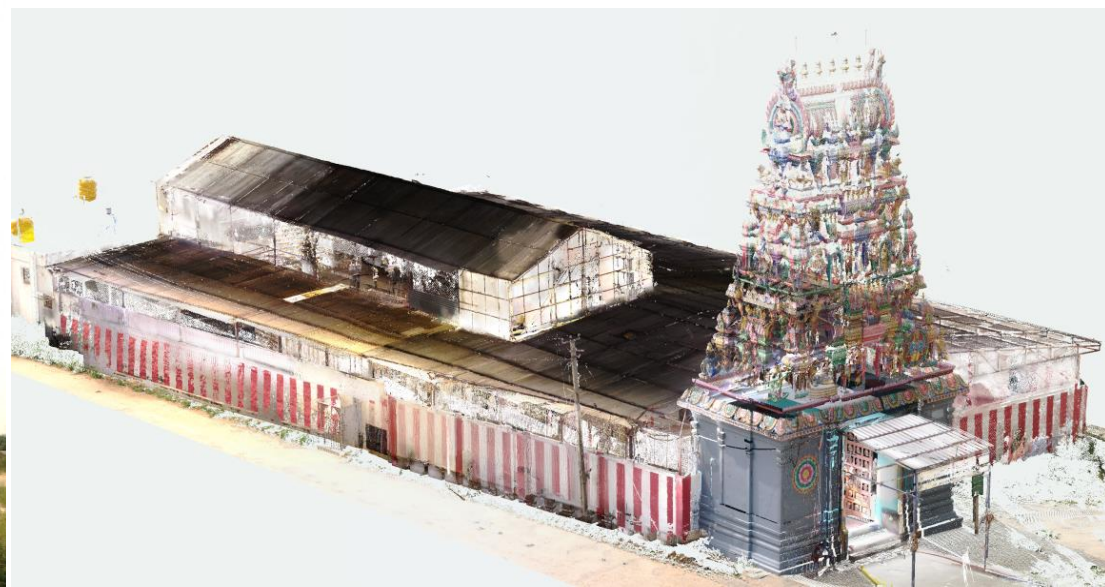
Taluk : Hassan

Locality : Shanthigrama

Geo - Coordinates:

Lat : 12.987065 ° N

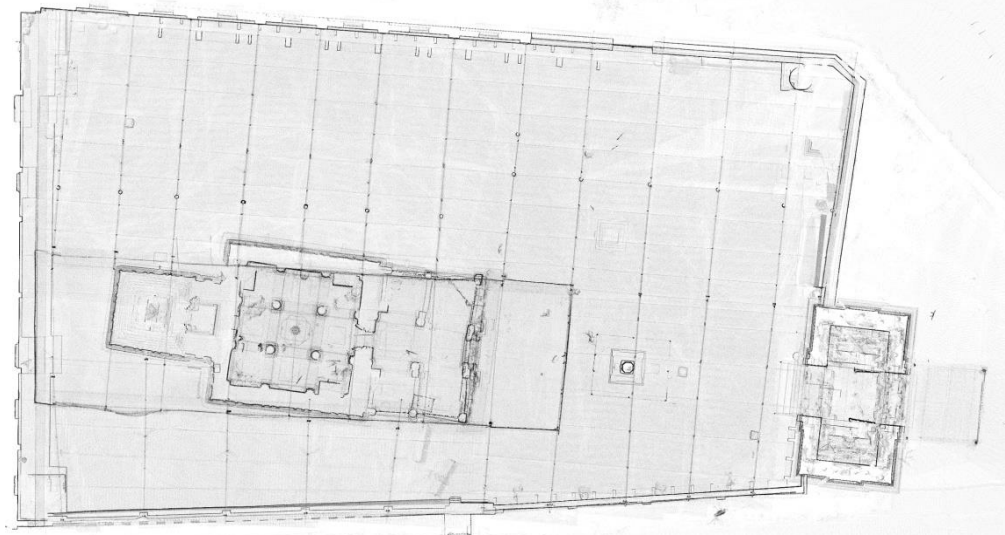
Long : 76.215985 ° E



3D Point Cloud

History

The Bhoga Narasimha Swamy Temple is located at Shanthigrama village in Hassan taluk and district. It is located on the shore of the village lake is the temple dedicated to Sri Varada Yoga Bhoga Narasimha Swamy. This is the most popular temple among pilgrims. Again a simple temple in terms of the plan and carving, it was built by Acala Prakasa Muni in the 12th century. The idol dates back to the Chola period and depicts Narasimha in a meditative posture, hence the name Yoga Narasimha. The ring of nine forms of Narasimha (Nava Narasimha Vritta) incorporated in the ceiling of the portico of the temple is a rare sculpture.



Plan

30. Sowmya Keshava Temple Place - Shanthigrama

District : Hassan
Taluk : Hassan
Locality : Shanthigrama

Geo - Coordinates:
Lat : 12.98612 ° N
Long : 76.21525 ° E

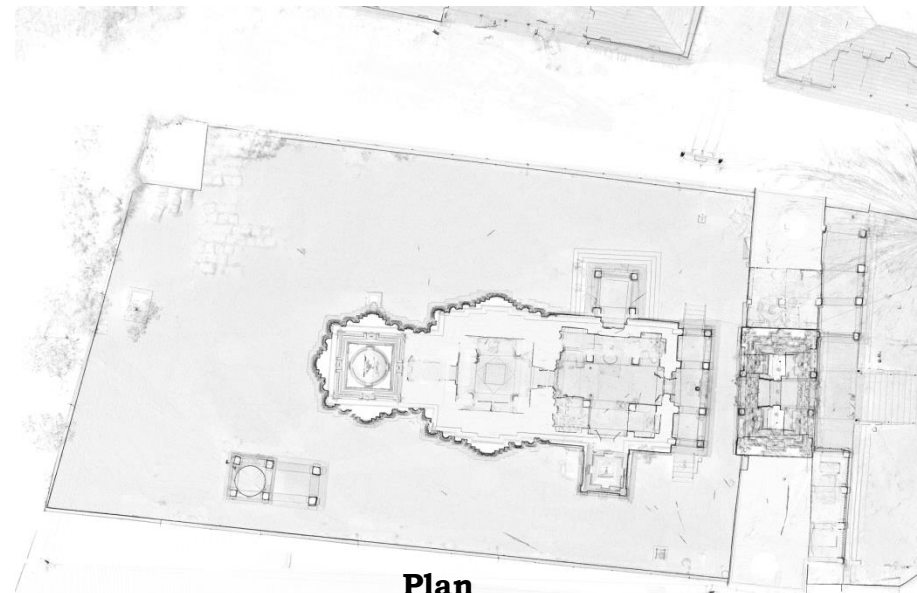


History

The Sowmya Keshava Temple is a Vishnu Temple is located at Shanthigrama village in Hassan taluk and district.

This Temple is dedicated to a form of Vishnu, favourite to the Hoysalas. It is a small and simple temple bereft of any carving and ornamentation. It is an ekakuta with a closed hall in front. The sanctum houses a beautifully carved idol of Chennakeshava.

3D Point Cloud



Plan

HASSAN DISTRICT MONUMENTS EXTRACT

Total No. of Monuments protected in Hassan District	30
Total No. of Monuments scanned	26
No. of Monuments Not Traced	3
No. of Monuments under Renovation	1

List of Monuments Not Traced

Groups Samadhi in Arasikere Town

Veerabhadra Temple in Golenahalli,
Holenarasipura Tq.

Rangaswamy Temple in Markuli Hassan Tq.

List of Monuments under Renovation

Narasimha Temple in Holenarasipura