

01.Sri Eshwara temple

Place - Anekonda

District : Davanagere

Taluk : Davanagere

Locality : Anekonda

Geo - Coordinates:

Lat : 14.477605° N

Long : 75.930083° E



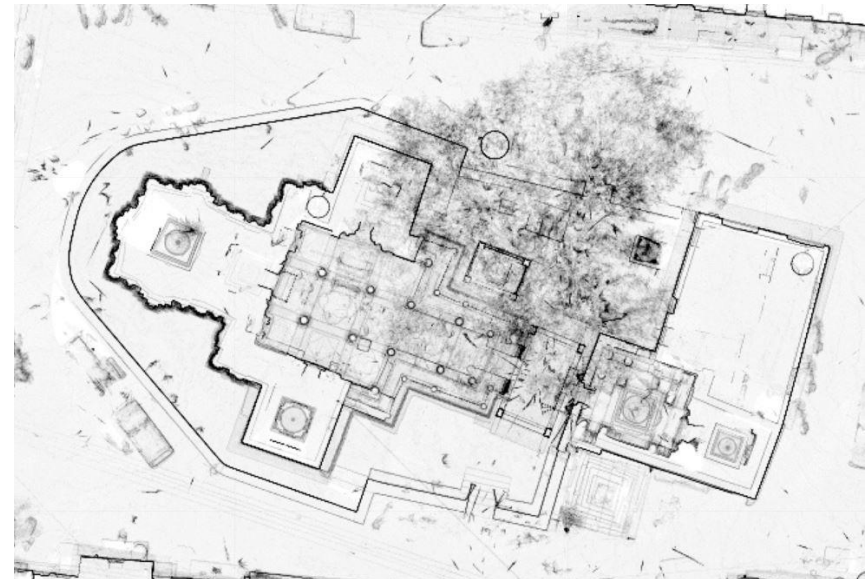
History

Sri Eshwara temple is located at Anekonda village in Davanagere taluk and District

This is a small triple shrine temple, but only two cells are extant now. The main cell has a *sukanasi* and a *navaranga*. The well-executed doorway of the *garbhagriha* has a figure of Gajalakshmi on the lintel. At the sides of the *sukanasi* doorway are two fine niches with female *chauri*-bearers on either side; the right one containing a figure of Sarasvati and the left one that of Mahishasuramardini. The central ceiling has the figure of Siva in dancing posture in the centre and Ashtadikpalakas at the eight cardinal points. The front *ankana* of the porch has Tandavesvara surrounded by petals of flowers.

The outer side of this small but beautiful Hoysala temple was restored with mud walls and plastered in 1912.

3D Point Cloud



02. Ranganatha temple

Place - Neerthadi

District : Davanagere

Taluk : Davanagere

Locality : Neerthadi

Geo - Coordinates:

Lat : 14.353027° N

Long : 76.146797° E



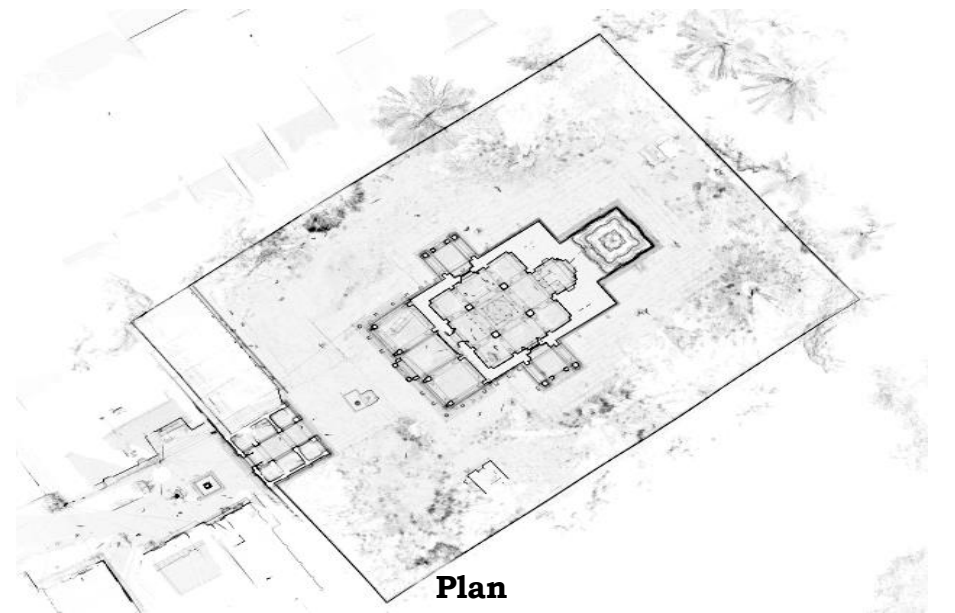
History

Sri Ranganatha temple is located in Neerthadi village in Davanagere taluk and District. The temple consists of a *garbhagriha*, a *sukanasi*, a *navaranga* and two small shrines on either side of the *navaranga* attached to the *sukanasi*. There is an open *mukhamantapa* with piers on either side of the entrance on the east and porches on the north and the south.

The central pillars of the *navaranga* are square and tapering to the top and have figures carved on all sides. The pillars of the *mukhamantapa* are also square and composite; the two middle ones contain figures of *yalis* and riders and the two outer ones have small pilasters. The central ceiling is deep with a pendant supported by four parrots.

The present image of Ranganatha is in a standing posture. The image of the goddess is kept in a room to the right of the *sukanasi* doorway. There are 12 images of Alvars,

3D Point Cloud



Plan

03. Thimmanna Nayaka's Tomb

Place - Mattigrama

District : Davanagere
Taluk : Davanagere
Locality : Mattigrama

Geo - Coordinates:
Lat : 14.285381° N
Long : 75.887093 ° E



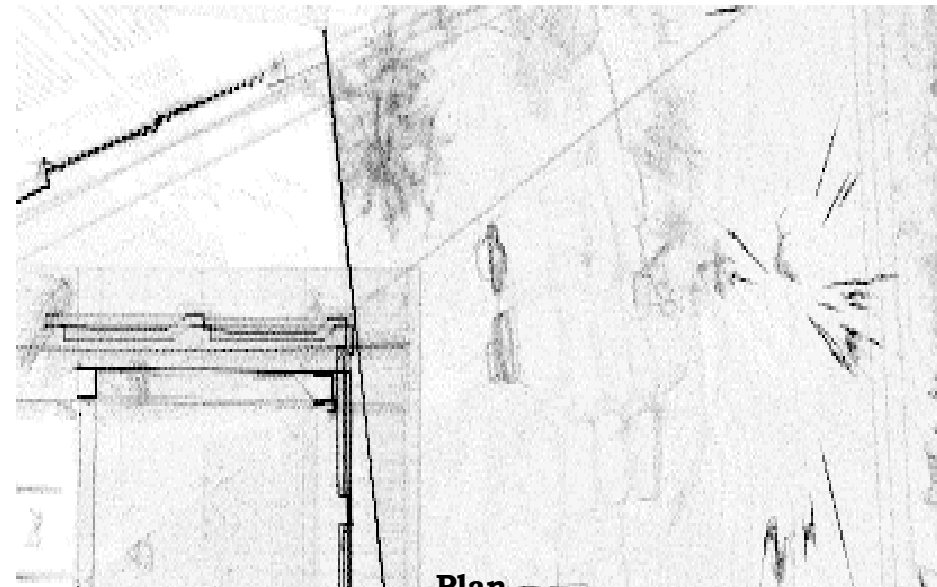
3D Point Cloud

History

Thimmanna Nayaka's Tomb is located in Mattigrama village in Davanagere taluk and District.

The *mantapa* of Timmanna Nayaka contains a stone relievio of a horse-rider with a *masti* stone beside it. There is another *masti* stone outside, to the south of the *mantapa*.

The horse-rider is identified as Timmanna Nayaka, the progenitor of the family of Madakari Nayaka. His figure is well executed. The horse is caparisoned. The figure holds a sword in his right hand and the reins of the horse in his left hand, and wears a *kacha* and a girdle containing a dagger sheath. The *masti* stone standing by the side of Timmanna Nayaka's tomb is pointed out as representing his concubine, while that standing outside is said to represent his wife.



Plan

04. RAJA MADAKARI NAYAKA'S TOMB Place - Mayakonda

District : Davanagere
Taluk : Davanagere
Locality : Mayakonda

Geo - Coordinates:
Lat : 14.292439° N
Long : 76.081083° E



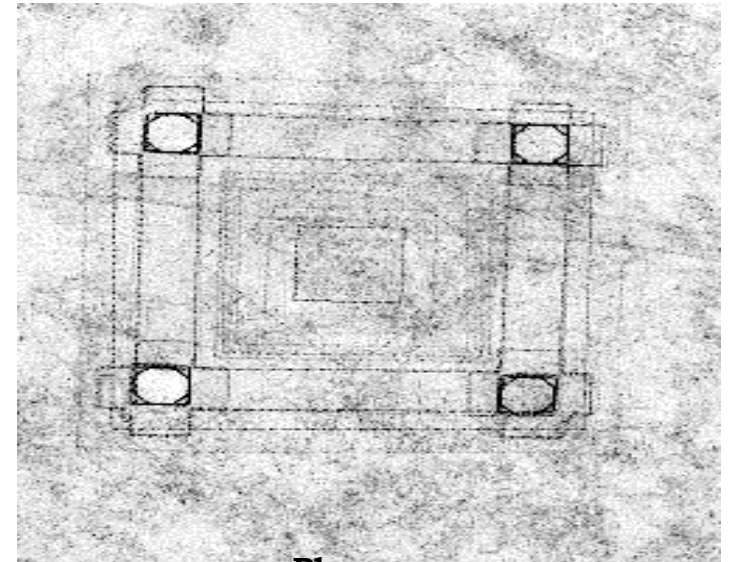
History

Raja Madakari Nayaka's Tomb is located at Mayakonda village in Davanagere taluk and District.

To the north of the village is a ground known as *gaddehalla* (*gadduge halla?*). To its north stands the village burial ground. At the centre of a site measuring approximately 40 x 40 m, is a stone *mantapa* about 2 m length x 2 m width x 2 m height. The *gadduge*, an elevated platform, set in memory of Hire Madakari Nayaka, is accommodated in this *mantapa*. Recently, a high wall has been constructed around this *mantapa*, with an entrance to the south. The floor of the *mantapa* and the *gadduge* are decorated in recent years with ceramic tiles.



3D Point Cloud



Plan

05. Sri Eshwara temple Place - Nandigudi

District : Davanagere
Taluk : Harihara
Locality : Nandigudi

Geo - Coordinates:
Lat : 14.413513° N
Long : 75.643297° E



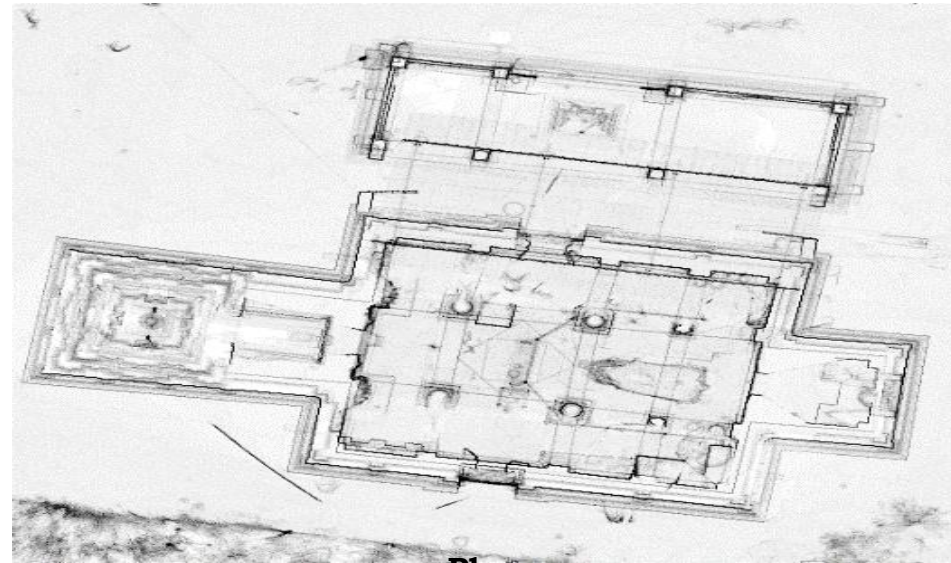
3D Point Cloud

History

Sri Eswara temple is located at Nandigudi in Harihara taluk, Davanagere district.

It consists of a *garbhagriha*, a small closed *sukanasi* and a *navaranga*. The *navaranga* has six pillars and a large central *ankana*. The outer walls of the *navaranga* are completely covered up. An ugly modern tower has replaced the old tower. In the *garbhagriha* a large *linga* with tapering head, is set on a low square pedestal. There is a low relieve *padma* in the ceiling. The doorway has Gajalakshmi on the lintel.

The *sukanasi* has a beautiful doorway of hard black stone. Each of its jambs has a Saiva-dvarapala at the bottom. The four main pillars of the *navaranga* are lathe-turned and have Chalukyan characteristic. The pilasters on the north wall and a beam above them suggest ancient renovations. In the *navaranga* is a large (2.5 x 2 m) finely carved black stone bull. At the east end of the temple is a small cell containing a standing Surya figure.



Plan

06. Sri Eshwara temple

Place - Nanditavare

District : Davanagere

Taluk : Harihara

Locality : Nanditavare

Geo - Coordinates:

Lat : 14.409482°N

Long : 75.783458°E



History

Sri Eshwara temple is located at Nanditavare in Harihara taluk, Davanagere district.

The temple is a small structure ornamented with beautiful sculptures. The *garbhagriha* and *sukanasi* are intact, but the *navaranga* has been restored with mud walls. The *navaranga*, with four pillars of the round lathe-turned type, has a small cell to its north. The lintel of the *sukanasi* doorway has a figure of Tandavesvara in the middle flanked by Brahma and Vishnu on the right and left. In a niche to the left of this doorway is a fine figure of Mahishamardini. Other figures there are Sarasvati and Saptamatrikas, Subramanya, Umamahesvara and Naga-dampati. In a cell to the left stands a fine figure of Vishnu. The central ceiling has delicately carved figures of Ashtadikpalakas. The outer walls of the *garbhagriha* and *sukanasi* have sculptures on them. A row of large figures runs round the temple. They are mostly mutilated and include Siva, Ganapati, Virabhadra, Hanuman, Dakshinamurti, Mohini, Rati and Manmatha. Around the *garbhagriha* are three fine niches in the three directions.

3D Point Cloud



Plan

07. Kalleshwara temple

Place - Channagiri

District : Davanagere

Taluk : Channagiri

Locality : Channagiri

Geo - Coordinates:

Lat : 14.021916°N

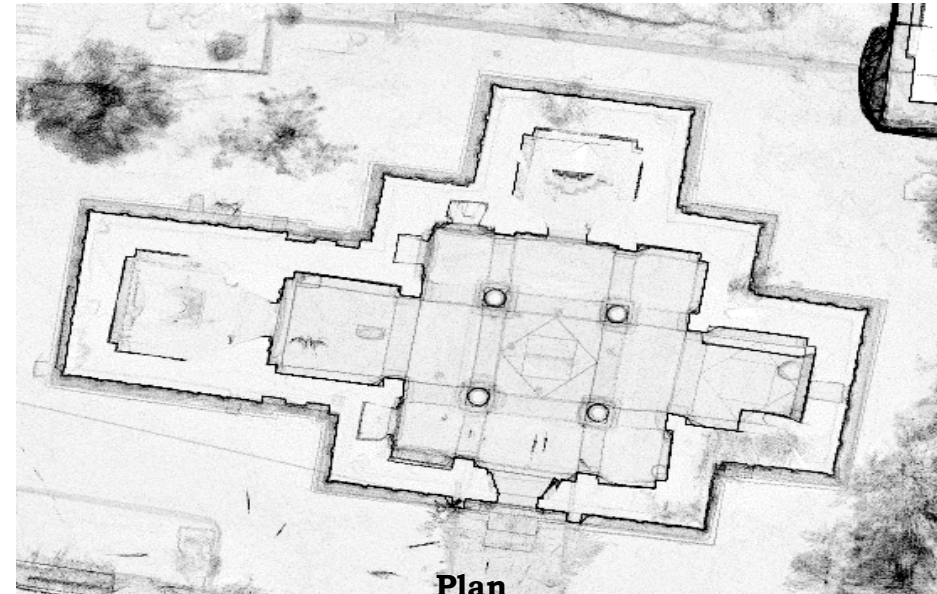
Long : 75.928738°E



History

Sri Kalleswara Temple is located at Channagiri town in Dvanagere district. The temple of Kallesvara, originally known as Ketesvara, has a small *navaranga* of four pillars, a *sukanasi*, a *garbhagriha* on the west, a simple cell on the north and an open *ankana* on the east. The *garbhagriha* contains a linga, which is the old Ketesvara. (It is split into two but joined together by a metal band). In the north cell stands Kesava, about 1.2 m high, a fine image resembling the Hoysala type with the ten *avatars* on the *Prabhavali*. Its nose is damaged and its *kirita* is peculiar. The open *ankana* on the east appears to have housed a Nandi image, which has now disappeared. At its back is a perforated stone window. The outer wall of the temple shows three plain cornices below, while the wall is ornamented with plain right-angled pilasters.

3D Point Cloud



Plan