

01. JAINA BASADI

Place - Heggere

District : Chitradurga

Taluk : Hosadurga

Locality : Heggere

Geo - Coordinates:

Lat : 13.607163°N

Long : 76.437321°E

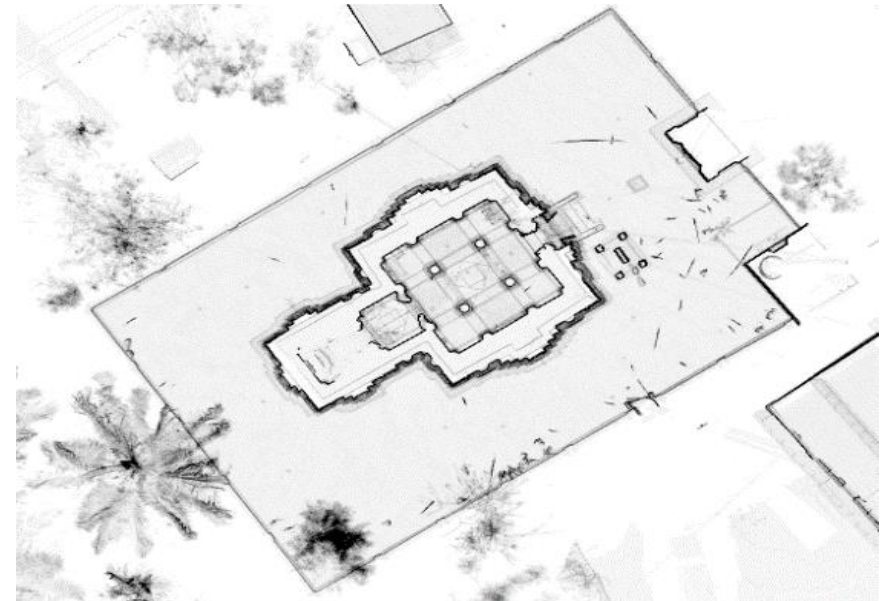


3D Point Cloud

History

The Parsvanatha basadi is located in Heggere, Hosadurga taluk, Chitradurga district. It is built of soap stone consists of a *garbhagriha*, a *sukanasi* and a *navaranga* in early Hoysala style.

It is an elegant structure possessing considerable architectural merit, being perhaps the only *basti* of its kind in the state. The *sukanasi* doorway has perforated screens at the sides. The *navaranga* has four black stone pillars and its central ceiling, about 2 feet deep, has a lotus bud. Similar ceilings are there in the *garbhagriha* and *sukanasi* also. The original Jina image seems to have been lost and in its place there is now a small figure of Anantanatha. The outer walls have a row of fine flowers of various patterns all round.



Plan

02. Sri Siddeshwara temple

Place - Nirgunda

District : Chitradurga

Taluk : Hosadurga

Locality : Nirgunda

Geo - Coordinates:

Lat : 13.781591°N

Long : 76.188188°E



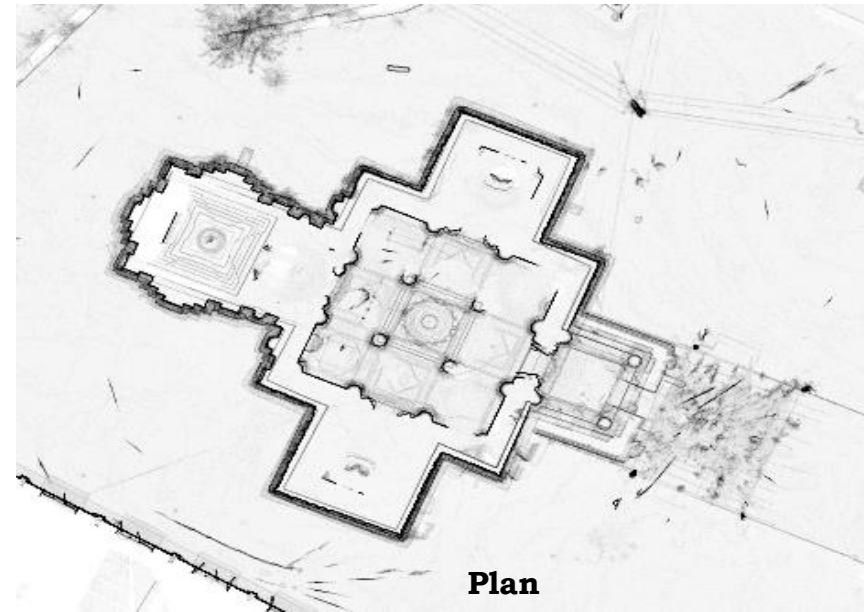
History

Sri Siddeswara temple is located in Nirgunda, Hosadurga taluk, Chitradurga district. This is a triple shrine temple (*trikutachala*) with a set of *garbhagriha* and *sukanasi* each placed to the north, west and south of a common *navaranga*. A porch is attached to the eastern side of the *navaranga*. The walls are plain but relieved by square pilasters and have two courses of eaves with bud-like ornamentation. The brick and mortar tower over the *garbhagriha* is probably a later addition.

The front porch of the temple is reached by a flight of steps on either side of which are the roughly worked elephant balustrades. The figures of Venugopala and Channakesava in the side shrines are of good workmanship. The *garbhagriha* has a well-worked *somasutra* and *linga*. The *sukanasi* has two finely carved jambs with perforated screens of fine scrolls; within each scroll a human figure is carved.

The side-shrines dedicated to Chennakesava and Venugopala have Vaishnava dvarapalas.

3D Point Cloud



Plan

03.Sri Channakeshava temple

Place - Bagur

District : Chitradurga

Taluk : Hosadurga

Locality : Bagur

Geo - Coordinates:

Lat : 13.816032° N

Long : 76.194082° E



History

Sri Channakeshava temple is located in Bagur, Hosadurga taluk, Chitradurga district.

The temple consists of a *garbhagriha*, a *sukanasi*, a *navaranga* and a *verandah*. A bronze image of Kodandarama in the temple that weighs 30 kilograms is of the Chola period. The image of Garuda, got prepared by Obannanayaka, palegar of Chitradurga, in 1601 is about 1.5 m tall. This interesting image is gold plated. this temple s built by chola s architecture.

It is one of the wonderful temple of Vijaya nagara dynasty and it is about 800 year old temple.

3D Point Cloud



Plan

04. Sri Trishankeshwara temple

Place - Brahmagiri Hill

District : Chitradurga

Taluk : Molakalmuru

Locality : Brahmagiri Hill

Geo - Coordinates:

Lat : 14.8054° N

Long : 76.8090° E

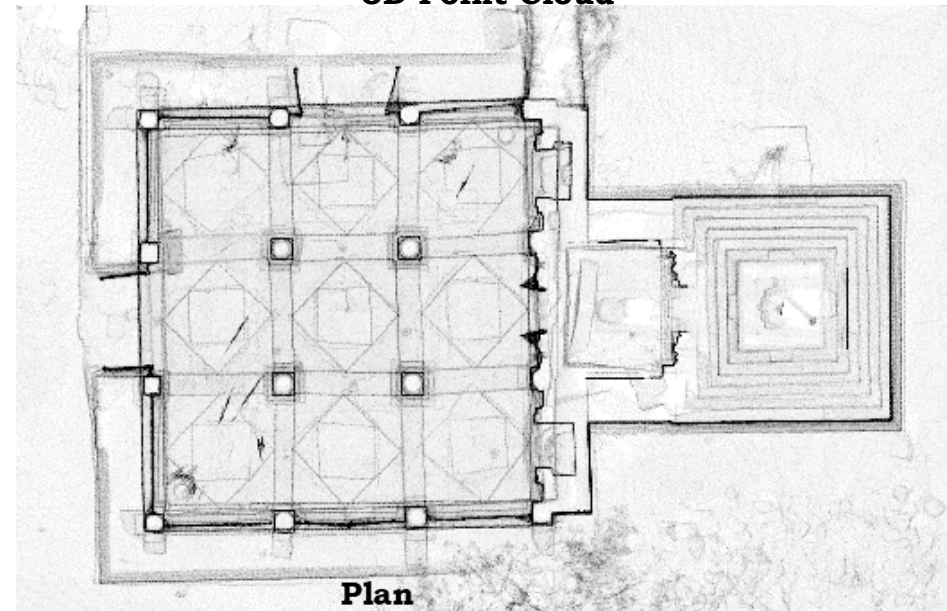


History

Trishankeswara temple is located on Bhahmagiri hill near Siddapura, Molakalmuru taluk, Chitradurga district. This building is typical of a prevalent local type and has a *garbhagriha*, a *sukanasi* and a *navaranga*. The *garbhagriha* contains a *linga*, about 2 m high, and a pedestal of black stone, placed under a shallow lotus *bhuvanesvari*. The *garbhagriha* doorway has Saiva *dvarapalas* on the jambs. The lintel has projections and drops, common to the Chalukyan and Hoysala style. The *sukanasi* doorway has a Gajalakshmi lintel supported by jambs with rhomboid floral ornamentation, all in granite. A *kalasa* is carved on the lower portion of each jamb. On the sides, there are niches now containing a Ganesa and a Kesava, evidently brought here from some other temple.

The open *navaranga* has 16 pillars and shallow *padma* ceilings. A stone railing, 75 cm high, runs round the *navaranga*. A Ganesa and a *viragal* are kept here. The temple has a plain pyramidal *vimana*.

3D Point Cloud



Plan

05. ROCK - CUT TEMPLE

Place - Ramadurga

District : Chitradurga

Taluk : Challakere

Locality : Ramadurga

Geo - Coordinates:

Lat : 14.40559° N

Long : 76.54236° E



History

The Rock-cut temple is located in Ramadurga village in Challakere taluk, Chitradurga district. Between the two fort walls on the west where the rock slopes down, there appears to have been a shallow cave, which is now converted into a cave temple.

The face of the rock has been cut by the architects until a vertical wall (about 7.5 x 3.5 m) was made. Next a regular hall has been hewn with eight pilasters and four pillars. The rock roof above is about a meter thick. Its inner side, i.e. the *navaranga* ceiling, is divided into 9 compartments. These are carved with beautiful padmas of Hoysala design.

The *navaranga mantapa* is 9 x 6 m. The *garbhagriha* doorway is a well-worked piece. The sanctum, the ceiling of which is unfinished, has a black stone linga (about 1 m high) which appears to have been brought from outside. The group is inset in a projecting *torana* on which are *chauri*-bearers and *dvarapalas*.

3D Point Cloud



Plan

06. Lakshminarasimha Swamy Temple

Place -Horakere Devarapura

District : Chitradurga

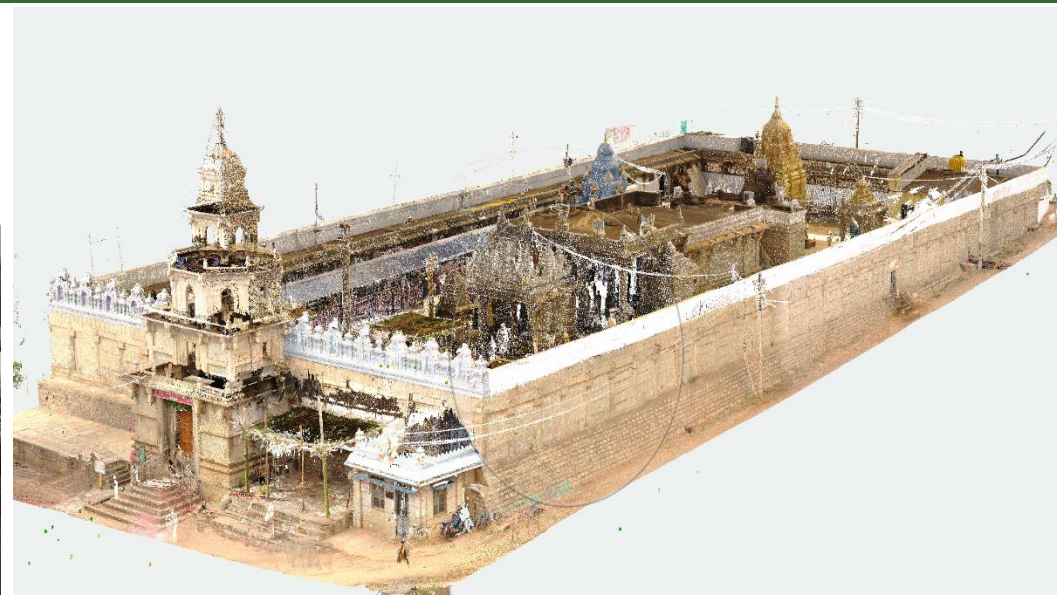
Taluk : Holalkere

Locality : Horakere Devarapura

Geo - Coordinates:

Lat : 14.032745° N

Long : 76.327248° E

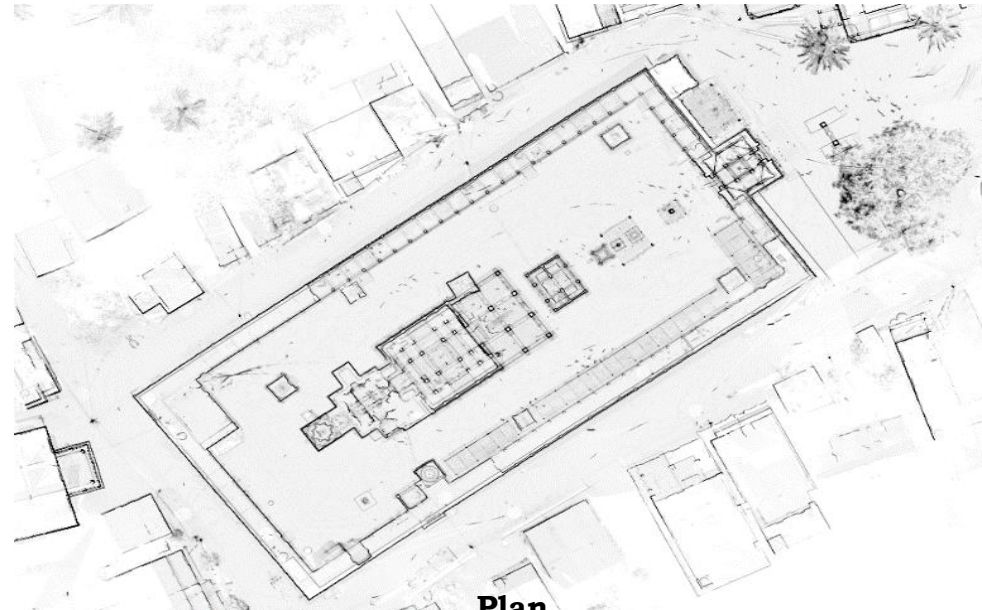


History

Sri Lakshmi Narasimha swamy temple is located in Horakere Devarapura village in Holalkere taluk, Chitradurga district. This temple with a large *prakara* has a *gopura* with five storeys. The temple proper consists of a *mukhamantapa*, a large porch, a *navaranga*, a *sukanasi* and a *garbhagriha*. The pillars in the temple are decorated with figures of various deities, animals, etc. The *mukhamantapa* is very interesting. Within the *garbhagriha*, upon an anthill may be seen the image of Ranganathasvami and in between the *garbhagriha* and *sukanasi* is the image of Lakshminarasimhasvami.

The sleeping Ranganatha image is placed in the *sukanasi*; the serpent Kalinga is seen behind the head of Ranganatha. The images of consorts' are at his feet. The temple is known for its beautiful sculptural work.

3D Point Cloud



Plan

07. Rangaiahna Bagilu

Place – Chitradurga City

District : Chitradurga
Taluk : Chitradurga
Locality : Chitradurga

Geo – Coordinates:
Lat : 14.2209° N
Long : 76.4039° E



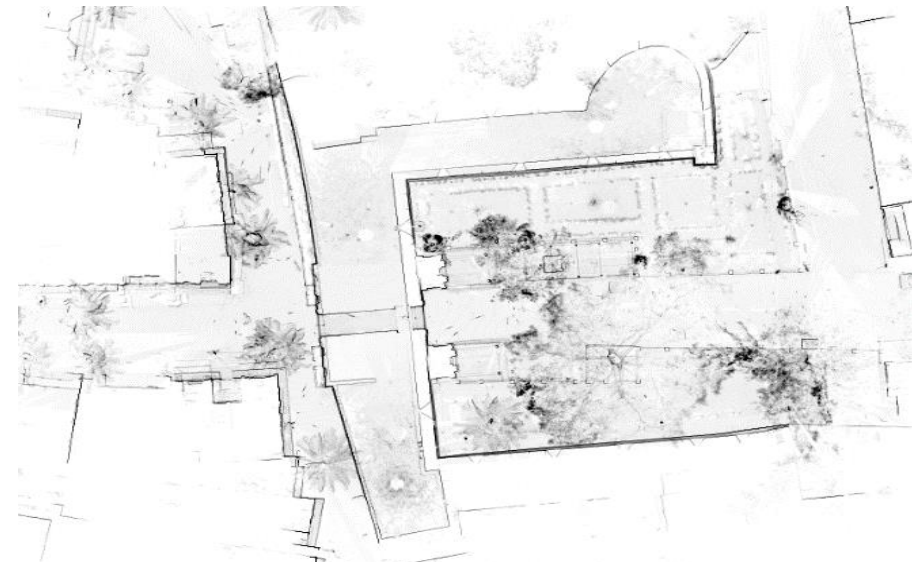
History

Rangaiahna Bagilu is located in Chitradurga city in Chitradurga district.

This is part of the outer fortifications. It is named after Nirthadi Ranganatha, the family deity of the Nayakas of Chitradurga. It appears to have been originally built in the last days of Vijayanagara and is ornamented with sculptures of Gandabherunda, Ganesa and other deities. The fort wall on either side (height about 7.5 m) is made of large finely dressed blocks of granite and was a formidable obstacle to the enemy.

A museum maintained by the Commissionerate of Archaeology and Museums, Govt of Karnataka is located near this gateway.

3D Point Cloud

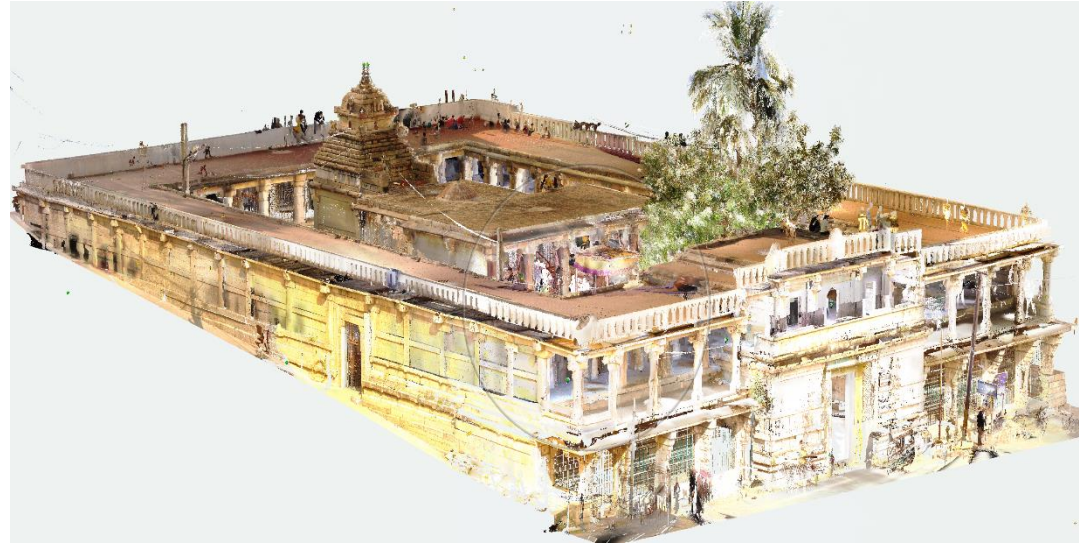


Plan

08. Uchangi Yellamma temple Place – Chitradurga City

District : Chitradurga
Taluk : Chitradurga
Locality : Chitradurga City

Geo – Coordinates:
Lat : 14.220405° N
Long : 76.399263° E



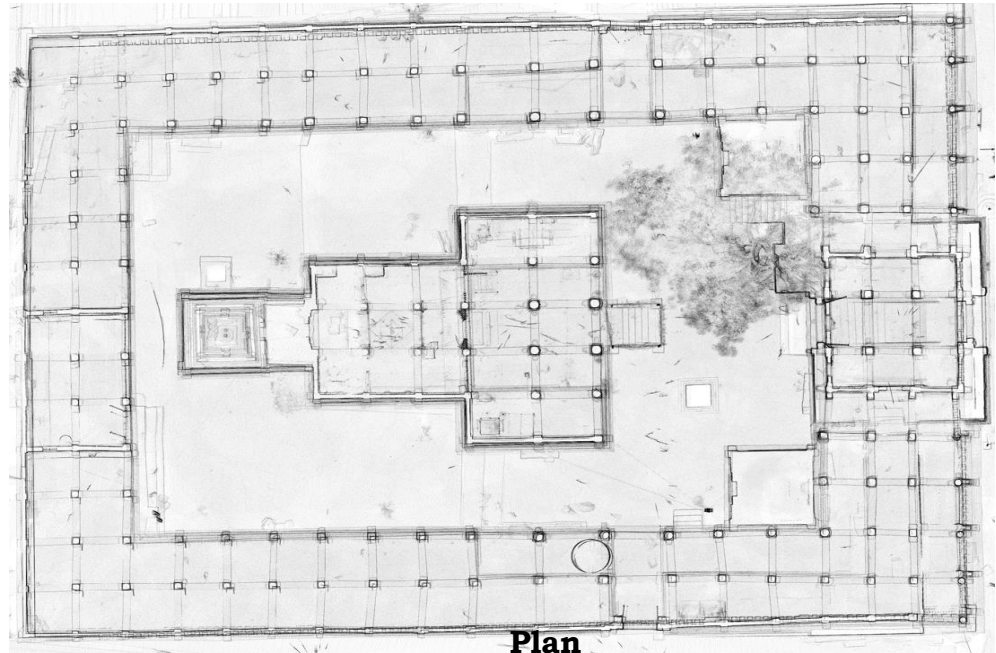
3D Point Cloud

History

The Uchangi Yellamma temple is located in Chitradurga city, Chitradurga district. It is located on the way to Fort in Chikkapete.

Yellamma popularly known as Renuka Yellamma is powerful deity in the town and this temple is facing east direction which has various mandapams. This temple was constructed in Vijayanagar style of architecture.

This temple was constructed by Madakari Nayaka dynasty and believed to be their goddess.



Plan