

01. Chennakeshava Temple

Place - Marale

District : Chikkamagalur
Taluk : Chikkamagalur
Locality : Marale

Geo - Coordinates:
Lat : 13°16'44"N
Long : 75°51'41"E

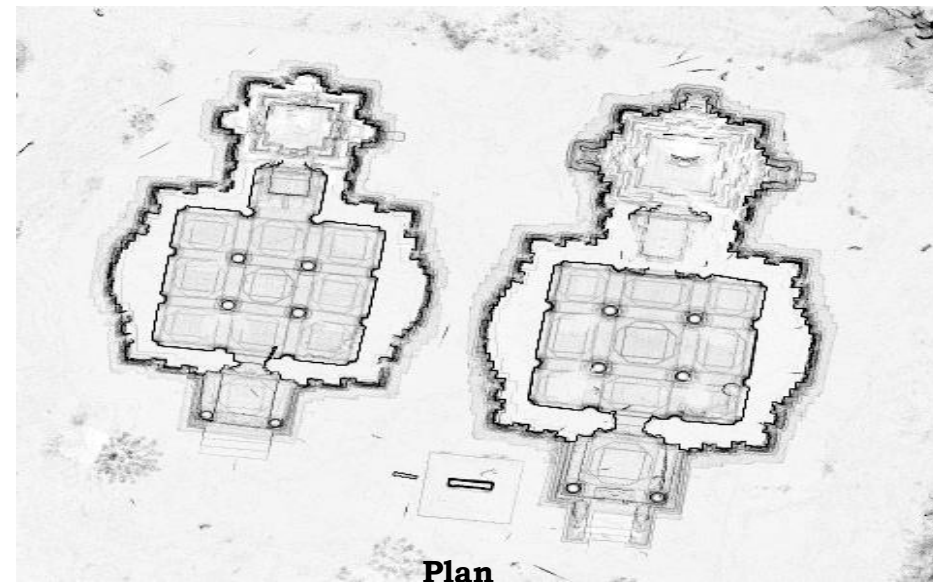


3D Point Cloud

History

The Chennakeshava temple is located at Marale Village in Chikkamagalur Taluk and District

This Keshava temple was constructed by Rayana Dandanatha. This temple together with Siddeshwara temple resembles the twin temples at Mosale. The temple has a garbhagriha, a closed sukhanasi and a navaranga of 9 ankanas. The basement has 4 cornices, while the navaranga and the Garbhagriha are squarish. The ornamented turrets on the walls are of the stepped pyramid kind. The porch ceiling with 9 squares bears the figure of Lakshminarayana. The four Navaranga pillars bearing beaded work have designed creeper toranas.



Plan

02. Siddeshwara Temple

Place – Marale

District : Chikkamagalur
Taluk : Chikkamagalur
Locality : Marale

Geo – Coordinates:

Lat : 13°16'44.00"N

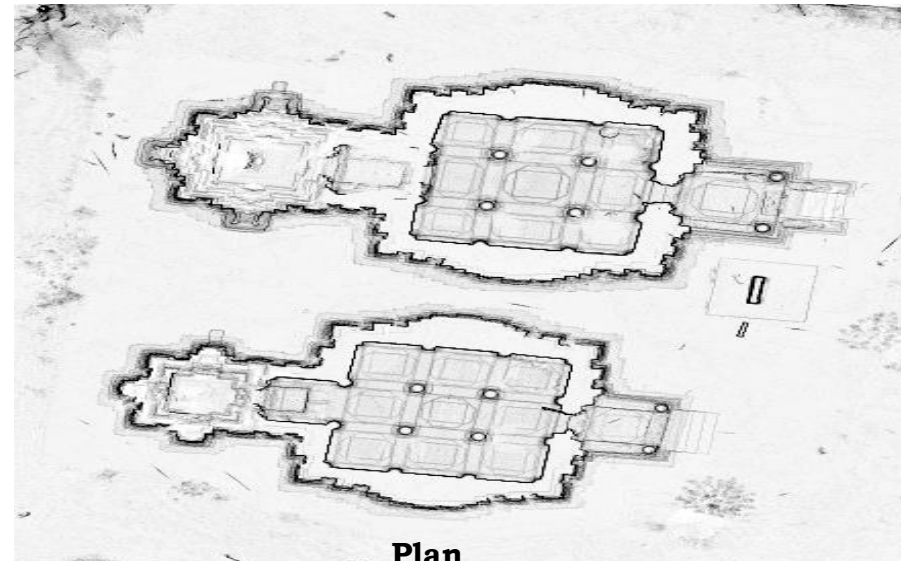
Long : 75°51'41.48"E



History

The Siddeshwara temple is located at Marale Village in Chikkamagalur Taluk and District. The Siddeshwara temple, square in form, is slightly smaller than the Keshava temple, but has several sculptures. The porch is flanked by Ganesha and Saraswati on the lintel and Nataraja surrounded by guardians of the directions on the ceiling. There is a fine central ceiling in the navaranga. The open sukhanasi contains an image of Vidyaganapati. On the lintel of the sanctum is the image of Gajalakshmi. In the sanctum is the Siddeshwara linga.

3D Point Cloud



Plan

03. Eshwara Temple and Kodandaramaswamy Temple Place - Hiremagalur

District : Chikkamagalur
Taluk : Chikkamagalur
Locality : Hiremagalur

Geo - Coordinates:
Lat : 13°18'17.31"N
Long : 75°47'49.09"E



History

The Eshwara and Kodandaramaswamy temple is located at Hiremagalur in Chikkamagalur Taluk and District.

Traditionally assigned to have been built by Parashurama. It has a garbhagriha, sukhanasi and navaranga. The navaranga has lathe-turned pillars, while sukhanasi opens into an extension. The decorative doorway belongs to the star-shaped kind. In the prakara are minor shrines with the images of Vedantacharya, Ramanujacharya and Alvars. There is an image of Yoganarasimha, 3Y2' high, with a prabavali depicting the 10 incarnations of Vishnu.

3D Point Cloud



Plan

04. Kodandarama Temple Place - Hiremagalur

District : Chikkamagalur
Taluk : Chikkamagalur
Locality : Hiremagalur

Geo - Coordinates:
Lat : 13°18'14.97"N
Long : 75°47'49.72"E

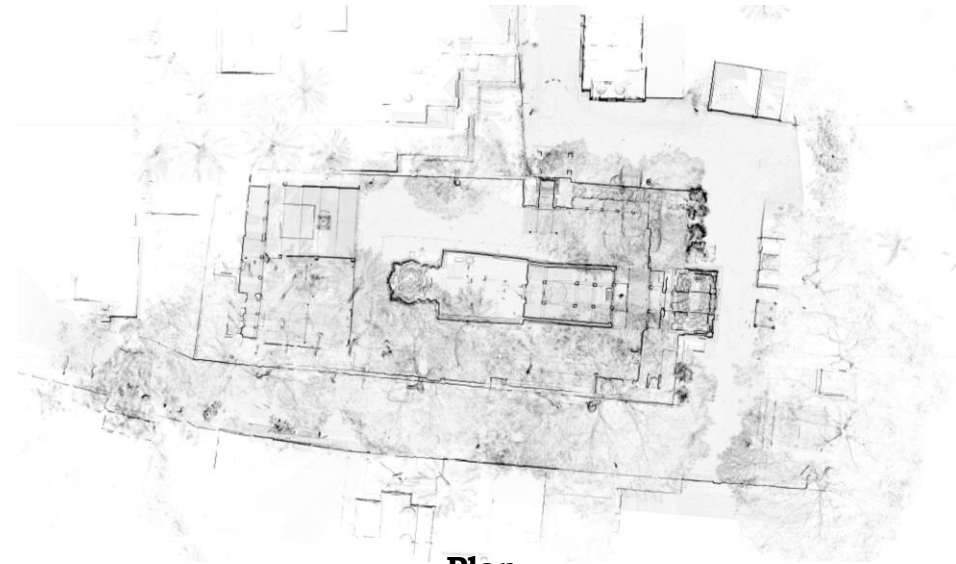


3D Point Cloud

History

The Eshwara and Kodandaramaswamy temple is located at Hiremagalur in Chakkamagalur taluk and District

Traditionally assigned to have been built by Parashurama. It has a garbhagriha, sukhanasi and navaranga. The navaranga has lathe-turned pillars, while sukhanasi opens into an extension. The decorative doorway belongs to the star-shaped kind. In the prakara are minor shrines with the images of Vedantacharya, Ramanujacharya and Alvars. There is an image of Yoganarasimha, 3Y2' high, with a prabavali depicting the 10 incarnations of Vishnu.



Plan

05. Markandeshwara Temple

Place - Khandya

District : Chikkamagalur

Taluk : Chikkamagalur

Locality : Khandya

Geo - Coordinates:

Lat : 13°22'49.88"N

Long : 75°31'11.67"E

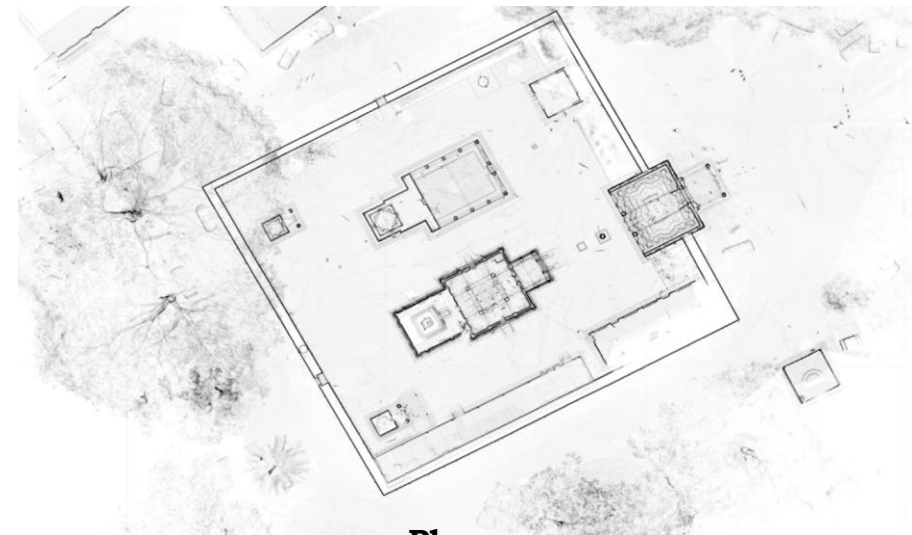


History

The Markandeshwara temple is located at Khandya in Chikkamagalur Taluk and District.

The Markandeshwara temple, one of the 3 important temples in Khandya is a homogenous structure of the Post-Vijayanagar style. It consists of a garbhagriha enshrining an old linga, a sukhanasi with a circumambulatory path and a navaranga with 4 granite pillars.. The figures of Virabhadra, Bhairava, Garuda and Hanuman are carved on the pillars. The temple is said to have been constructed by Venkatappanayaka (of Belur or Ikkeri)

3D Point Cloud



Plan

06. Gangeshwara and Dharmeshwara Temple Place - Asandi

District : Chikkamagalur

Taluk : Kadur

Locality : Asandi

Geo - Coordinates:

Lat : 13°42'54" N

Long : 76°05'32" E



3D Point Cloud

History

The Gangeshwara and Dharmeshwara temple is located at Asandi Village in Kadur Taluk and Chikkamagalur District

The Gangeshwara and Dharmeshwara temples form a large single homogenous structure with 2 adjacent shrines and an extended open mantapa in front. They have 2 porches on east, one for each shrine. The outer walls of both shrines are constructed on an indented square plan. The basement with 4 cornices has an array of dentil mouldings. The Dravidian turrets borne by single columns stand underneath floriated simhalalatas. The common open mantapa is a 19' long 3-aisled hall with 2 entrances.



Plan

07. Veerabhadhra and Chandikeshwara Temple Place – Asandi

District : Chikkamagalur
Taluk : Kadur
Locality : Asandi

Geo – Coordinates:
Lat : 13°42'51.15"N
Long : 76° 5'33.86"E

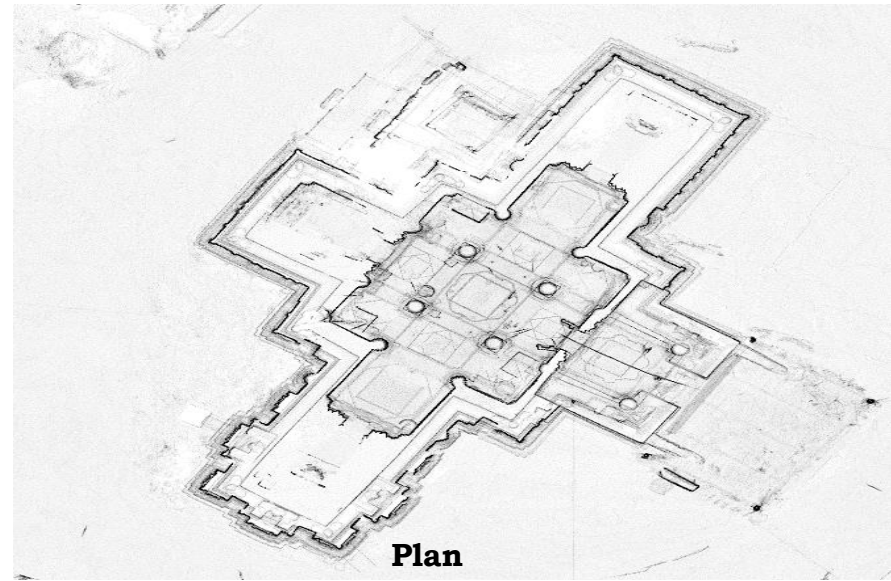


3d Point Cloud

History

The Veerabhadra and Chandikeshwara temple is located at Asandi village in Kadur Taluk , Chikkamagalur District.

The Virabhadra temple, constructed by Haraha Sahani, is a trikutachala. The shrines bereft of a linga, however, have the images of Virabhadra (eastern and western shrines). In the north shrine is a set of metallic images.. On the outer walls of the western cell are images standing under Kalasa bearing niches. On the eastern railing is a Nataraja group, and the Trivikrama incarnation of Vishnu on the western. The Chandikeshvara temple contains a linga in the south shrine and is called Chandikeshwara.



Plan

08. Mallikarjuna Temple Place - Hirehallur

District : Chikkamagalur
Taluk : Kadur
Locality : Hirehallur

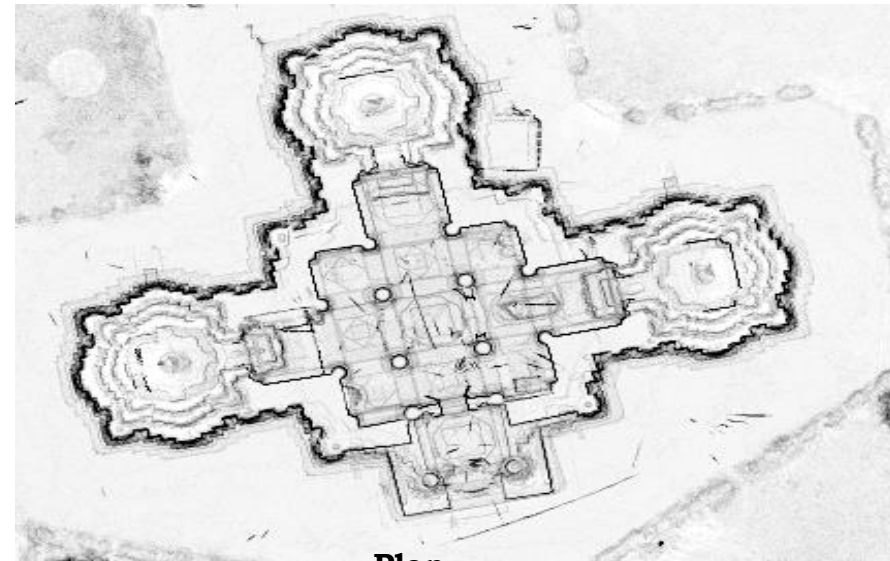
Geo - Coordinates:
Lat : 13°40'22.25"N
Long : 76°02'27.65"E



3D Point Cloud

History

The Mallikarjuna temple is located at Hirehallur village in Kadur Taluk, Chikkamagalur District. The temple was built in about C. 1208 AD during the reign of Hoysala king Ballala-II. The structure is a Trikuta temple with Dravida shikhara. It consists of three Girbhagrishas: Sukhanasi and a Navaranga, and also a Mukhamantapa. Navaranga has nine ankanas and a centrally raised platform. The temple has intricate carvings, especially on the towers. On the walls are kuta and panjara panels. The temple is quite an interesting one for its fusion of architectural details.



Plan

09. Lakshmikanta Temple Place - Devanuru

District : Chikkamagalur

Taluk : Kadur

Locality : Devanuru

Geo - Coordinates:

Lat : 13°25'33.45"N

Long : 76° 5'27.53"E

Under Renovation

History

The Lakshmikanta temple is a moderate sized structure. It consists of a garbhagriha and a sukhanasi leading to the inner navaranga. On a platform to the north are 11-seated images, one of which is a statue of the local poet, Lakshmikantha Hebbar. The sculpture is under worship. The outer navaranga with 6 pillars also contains the metallic processional image in the middle bay. On the rear side of the temple, in a mantapa, is an English tablet, about the poet.

3D Point Cloud

Plan

10. Jain Basadis

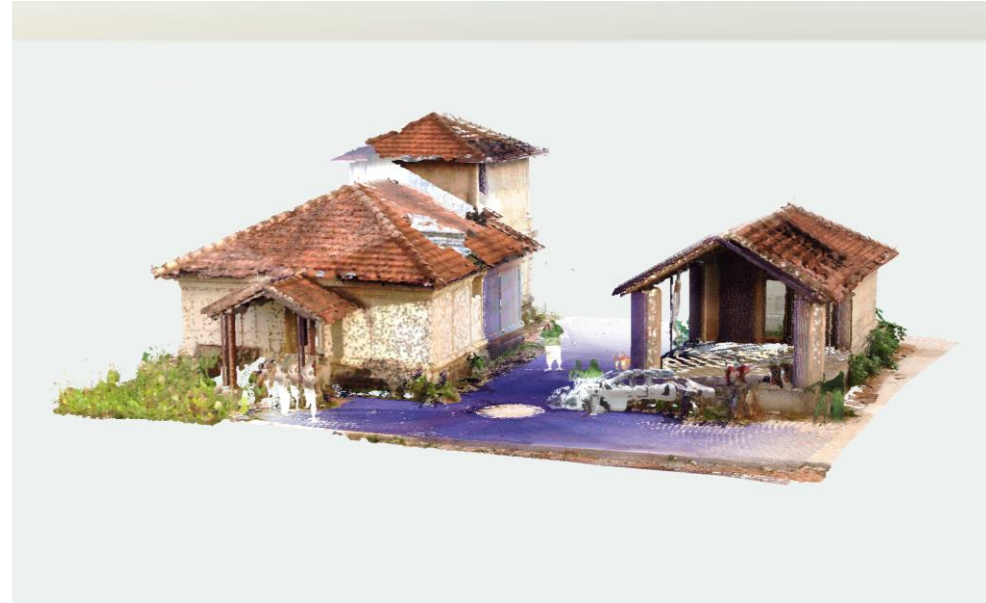
Place - Angadi

District : Chikkamagalur
Taluk : Mudigere
Locality : Angadi

Geo - Coordinates:

Lat : 13° 3'26.24"N N

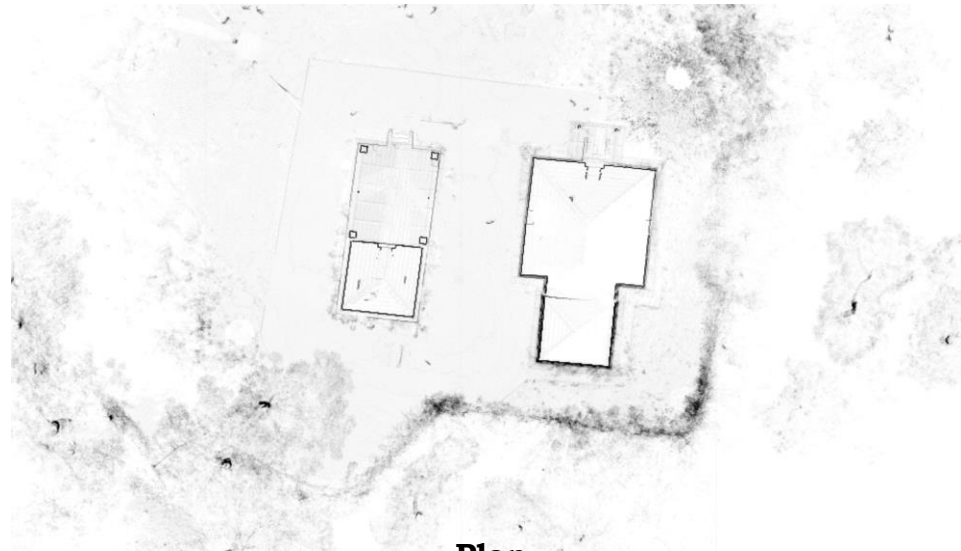
Long : 75°39'1.56"E



History

The Jain Basadis are located at Angadi village in Mudigere Taluk, Chikkamagalur District. Angadi is also called Sosevur in the inscriptions. The 2 Jain temples along with 3 other temples-although in ruins-are significant. One of the Jain basadi is called Makarajinalaya, is believed to have been built by Manika Poysalachari. The large basadi contains 3 standing images in the sanctum while the smaller basadi contains a huge seated figure of Shantinatha.

3D Point Cloud



Plan

11. Kalaseshwara Temple

Place - Kalasa

District : Chikkamagalur
Taluk : Mudigere
Locality : Kalasa

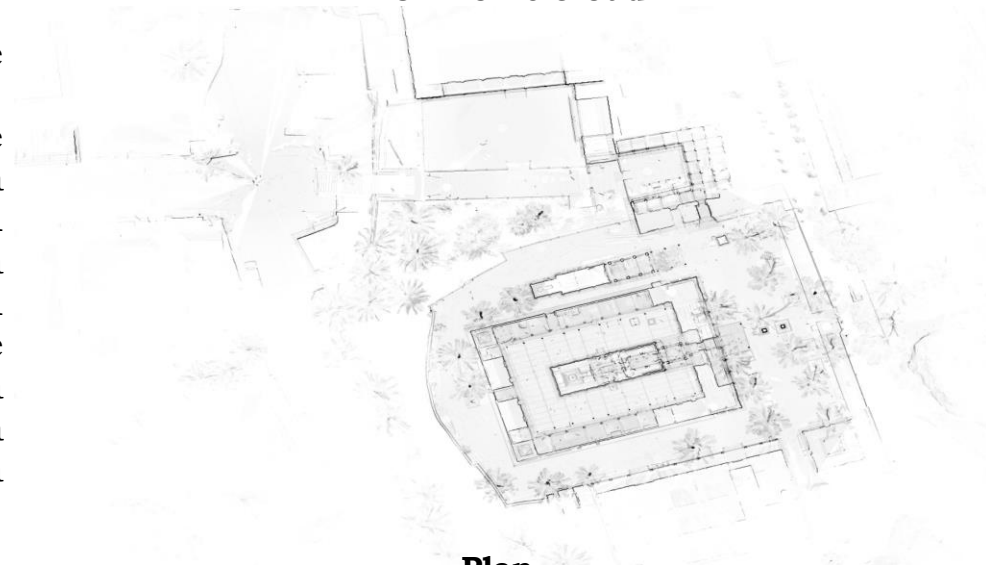
Geo - Coordinates:
Lat : 13°13'57.45"N
Long : 75°21'48.72"E



History

The Kalaseshwara temple is located at Kalasa village in Mudigere Taluk, Chikkamagalur District. The Kalaseshwara temple has a modern enclosure wall. It consists of a garbhagriha, a navaranga and a mukhamantapa. The sanctum contains a 9" high Linga tilted towards the north. The navaranga entered through entrances to the north and south comprises 16 sided wheel topped granite pillars. The temple has a pyramidal stone 'Shikhara' with a metal kalasa. Near the steps and the main gate is a 2' long reclining lion of Soapstone. It is of Hoysala craftsmanship.

3D Point Cloud



Plan

12. Keshava Statue

Place - Angadi

District : Chikkamagalur
Taluk : Mudigere
Locality : Angadi

Geo - Coordinates:

Lat : 13° 3'26.81"N

Long : 75°38'59.57"E



History

The Keshava temple is located at Angadi village in Mudigere Taluk, Chikkamagalur District. The Keshava statue is located in one of the 3 temples, now in ruins dedicated to Lord Keshava, Lord Veerabhadra and Lord Mallikarjuna.

The beautiful Keshava image is an excellent example of figure sculpture representing the legend of Hoysala architecture.

3D Point Cloud



Plan

13. Someshwara Temple Place – Somapura

District : Chikkamagalur

Taluk : Tarikere

Locality : Somapura

Geo – Coordinates:

Lat : 13°43'29.80"N

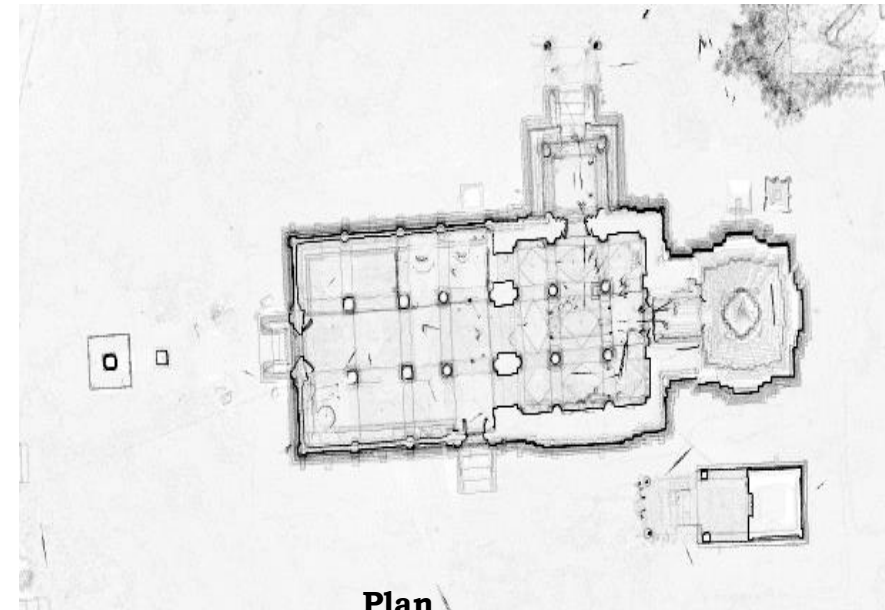
Long : 75°40'36.08"E



3d Point Cloud

History

The Someshwara temple is located at Somapura village in Mudigere Taluk, Chikkamagalur District. The Prasanna Someshwara temple is 3 miles from Rangenahalli station on the Tarikere-Koppa tramway. It consists of a garbhagriha, sukhanasi, navaranga and a mukhamantapa. The western entrance leads to the mukhamantapa. The perforated screens of the entrance to sukhanasi has 2 niches with sculptures of Ganesha and Subramanya. Kalabhairava and Virabhadra are enshrined in the mukhamantapa. The main temple has an ornamental floral frieze. The 2"X3" linga in the garbhagriha, unlike all other lingas, has an elliptic hole in it.



Plan

14. Yoganarasimhaswamy Temple

Place - Baggavalli

District : Chikkamagalur
Taluk : Tarikere
Locality : Baggavalli

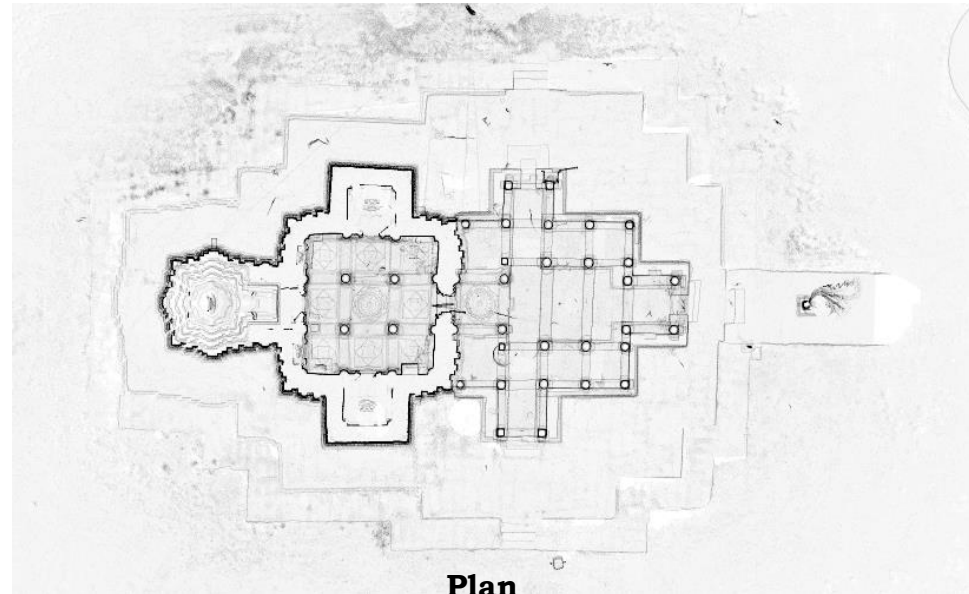
Geo - Coordinates:
Lat : 13°41'35.03"N
Long : 75°58'19.47"E



3D Point Cloud

History

The Yoganarasimhaswamy temple is located at Baggavalli village in Mudigere Taluk, Chikkamagalur District. Temple is popularly called Yoganarasimha but actually the dedication of the structure was made to Keshava. The structure was built during the Hoysala period. The deity in the sanctum sanctorum is Keshava, which is about 1.52 meters in height. Shrine of Lakshmi, stands nearby which is simple square structure, Yoganarasimha sculpture is also found in the same structure, besides Shanmukha Ganesh and Lakshmi Narayana figures are found.



Plan