

# 1. Choubara

## Place – Bidar City

**District** : Bidar  
**Taluk** : Bidar  
**Locality** : Bidar city

**Geo – Coordinates:**  
**Lat** : 17.9119° N  
**Long** : 77.5300° E

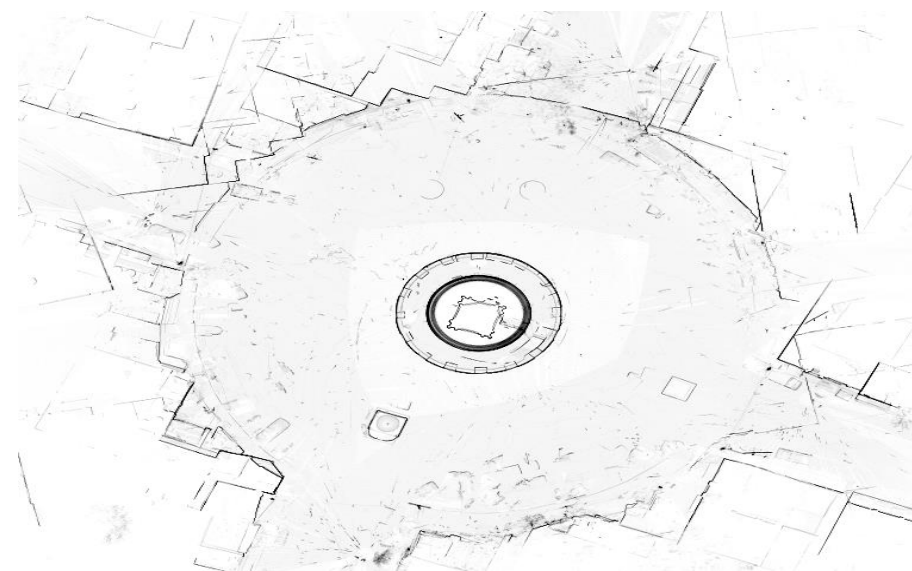


**3D Point Cloud**

## History

The Choubara monument is located in Bidar city, Bidar district.

This is an old cylindrical tower, constructed probably as an observation post. It rises to about 22 meters above the ground level commanding a fine view of the entire plateau from the top. The base of the tower is circular in shape, measuring 55 meters and is about 5.2 meters high with arched niches built along its lower parts. Light and air are allowed to pass through the four rectangular openings.



## 02. Farah Bagh Mosque

Place – Bidar City

District : Bidar  
Taluk : Bidar  
Locality : Bidar City

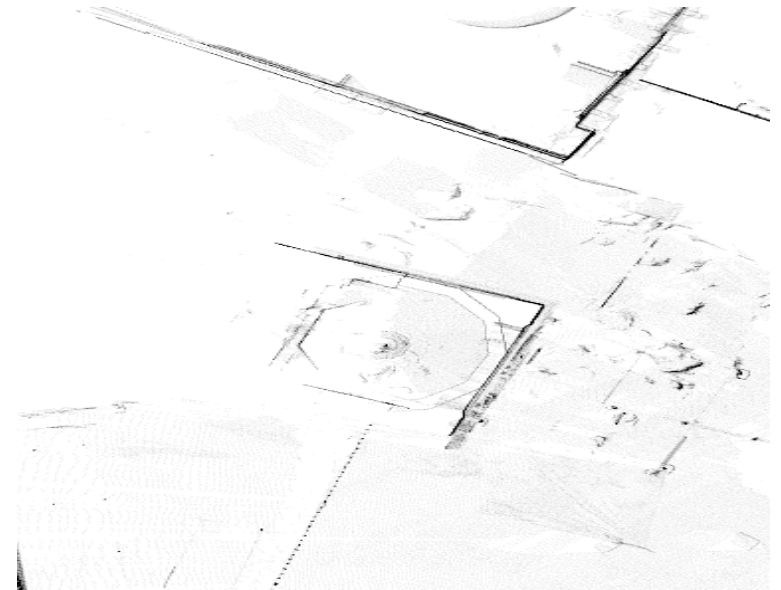
Geo – Coordinates:  
Lat : 17.9030 ° N  
Long : 77.5444 ° E



3D Point Cloud

### History

The Farah Bagh Mosque is located in Bidar city, Bidar district. The mosque is a small structure consisting of a prayer hall with a terrace in front of it. The prayer hall has three arched openings towards the east. The ceiling of the building is vaulted, being divided into three compartments by arches, which are built across the depth of the wall. According to an inscription, this mosque was built by Mukhtan Khan, the then Governor of Bidar. The temple stands towards the west, adjoining the southern wall of the mosque. Its iron gate and cusped arch-head have a modern appearance.

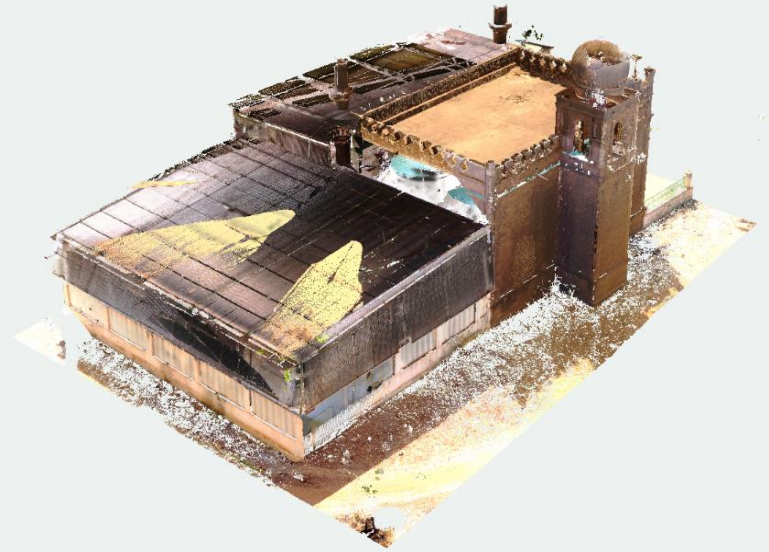


## 03. Kali Masjid

Place - Bidar

District : Bidar  
Taluk : Bidar  
Locality : Bidar city

Geo - Coordinates:  
Lat : 17.9099 °N  
Long : 77.5127 °E



### History

The Kali Masjid is located in Bidar city, Bidar district.

It has been called the Kali (black) Masjid on account of its trap masonry, which is black in colour. The dome of the mosque rests on a high square base having an open arch on all sides. It has a main square base having an open arch on all sides. It has a main hall with two minarets, their neatly dressed masonry, graceful carving and slim form captive the eye of a visitor. The arches of the façade of the mosque have large spans.

3D Point Cloud



## 04. Sadat Spring

Place – Bidar city

District : Bidar  
Taluk : Bidar  
Locality : Bidar city

Geo – Coordinates:  
Lat : 17.9283 ° N  
Long : 77.5090 ° E

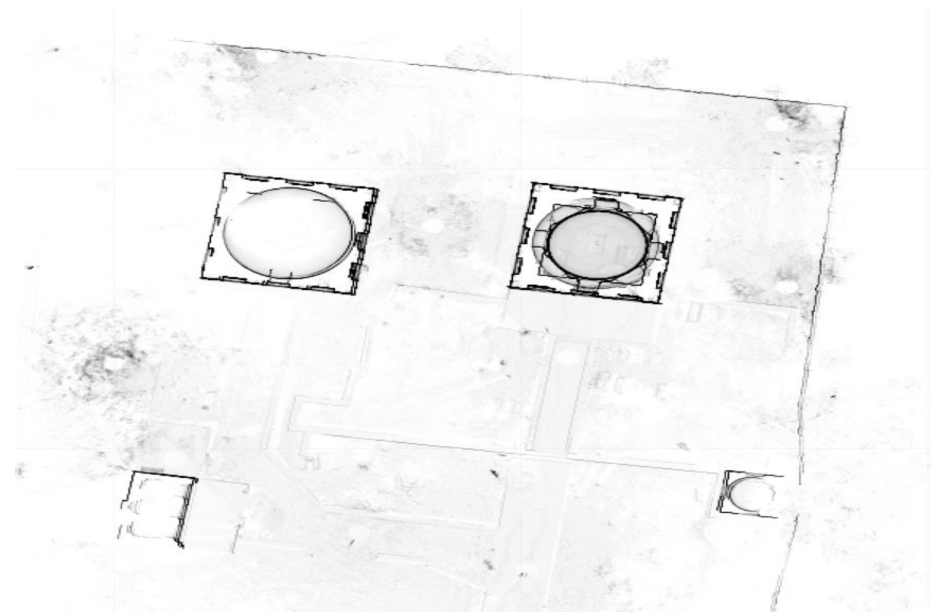


### History

The Sadat Spring is located in Bidar city, Bidar district. To the westwards of the shrine of Hadrat Sayyed Us Sadat, passing through a mango-garden one reaches the Saadat Spring. There is an enclosure wall and several steps to descend to the water level. But the dimensions of the cistern being very small, the water is carried down by means of a covered channel to another cistern, which is built in the garden at a short distance. It measures of about 25 m north to south and about 19 m east to west. People bath in this cistern, the surplus water flows down the lowlands.



3D Point Cloud



## 05. Maqbara Mahmood Gavan

Place – Bidar city

District : Bidar  
Taluk : Bidar  
Locality : Bidar city

Geo – Coordinates:  
Lat : 17.8810 ° N  
Long : 77.5344 ° E



3D Point Cloud

### History

The Maqbara Mahmood Gavan monument is located in Bidar city, Bidar district. This building of the great madrasa was constructed by Mahamud Gawan, who was the Prime Minister of Bahamani ruler Muhammad Shah III. This imposing and spacious building occupies an area of 62.53 meters by 54.9 meters. It has two lofty towers in the front about 30-50 meters high. It is a three-storeyed building housing a mosque, a laboratory, lecture halls, professor's quarters, student's cubicles looking on to library, an open courtyard.



## 06.Amir Fakrul-Mulk Gilan's Tomb

Place – Fatehpur, Bidar

District : Bidar

Taluk : Bidar

Locality : Fatehpur

Geo – Coordinates:

Lat : 17.9848 ° N

Long : 77.5516 ° E



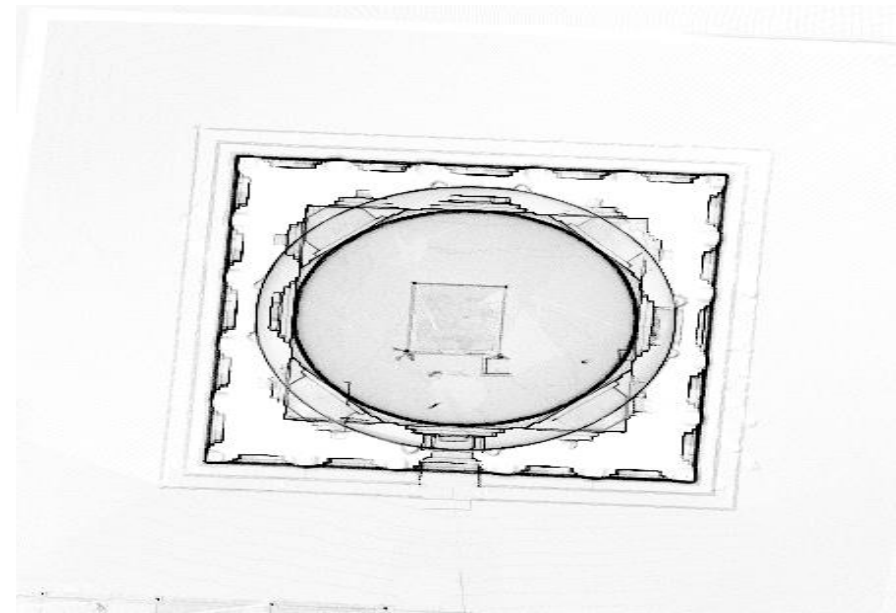
### History

The Amir Fakrul Mulk Gilan's Tomb is located in Fatehpur in Bidar taluk, Bidar district.

This lofty tomb of Fakhr-ul-Mulk-Gilani, who was one of the dignitaries of the Bahmani court, is built on a high, spacious and long-stepped platform. The hemispherical dome of the early Sultans of Delhi and the stilted turnip-shaped dome of the Mughals. The walls here have decorations with two series of arches, built one above the other, and at the top they have a parapet, comprising arch heads and little pillars crowned with orbs.



3D Point Cloud



## 07. Ishwara Temple

Place - Jalasangvi

District : Bidar  
Taluk : Humnabad  
Locality : Jalasangvi

Geo - Coordinates:  
Lat : 17.8314° N  
Long : 77.1763° E



3D Point Cloud

### History

The Ishwara Temple is located in Jalasangvi in Humnabad taluk, Bidar district. This temple, situated on the bank of the tank at the village, is in ruins. This temple is replete with numerous sculptured figures both in the interior and on the exterior surface. The figures on the exterior are all of women in different kinds of apparel and with different styles of hairdressing. They exhibit several dancing postures. There is an image of a lady depicted as inscribing a sanskrit epigraph in Kannada characters which is of about 1100 A.D.

