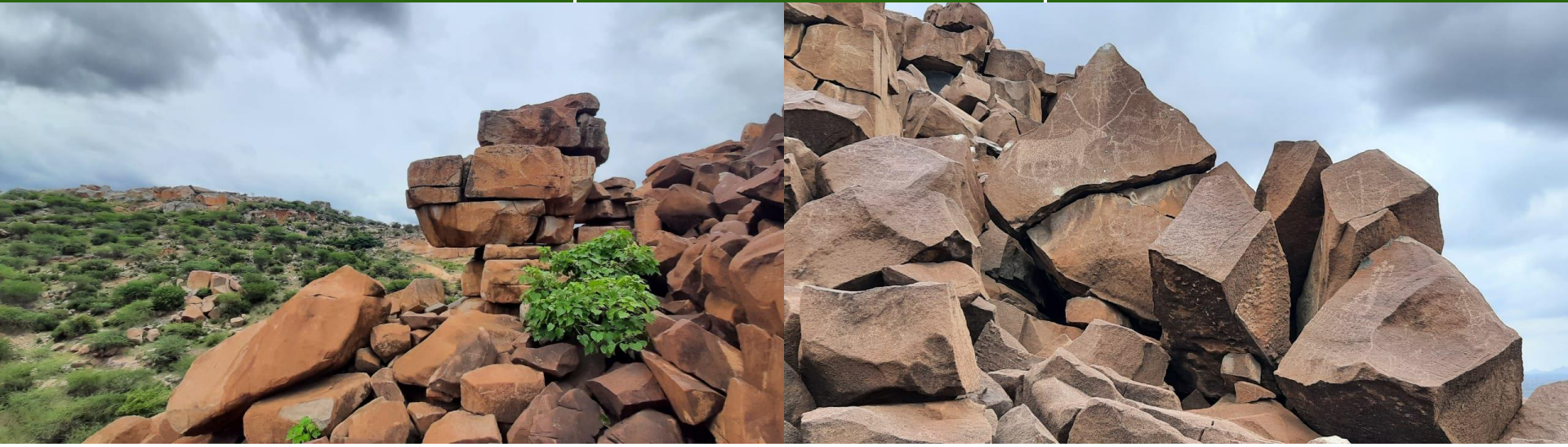


# 01. Sangana Kallu

Place - Sangana Kallu

District : Ballari  
Taluk : Ballari  
Locality : Sangana Kallu

Geo - Coordinates:  
Lat : 15.189418 °N  
Long : 76.973323 °E



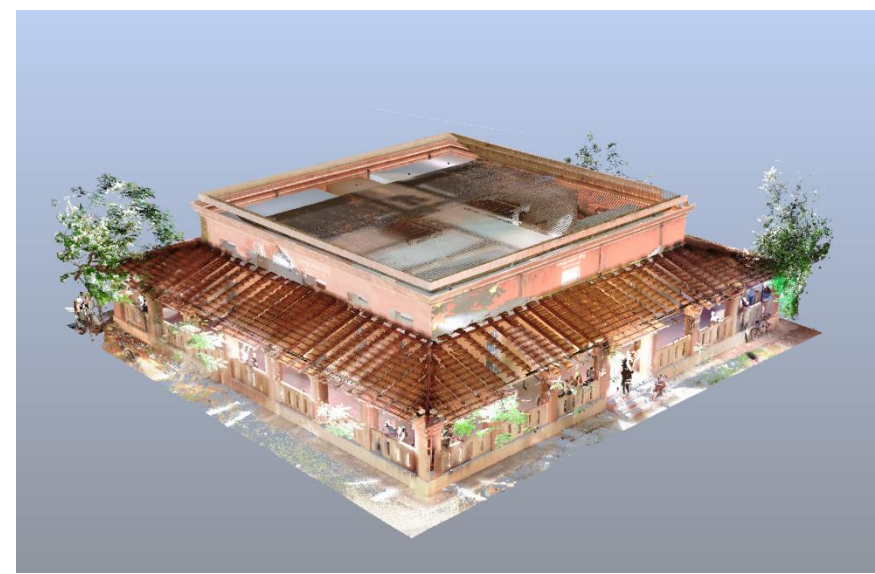
## History



## 02. Allipura Jail Place - Ballari

District : Ballari  
Taluk : Ballari  
Locality : Govt. Hospital

Geo - Coordinates:  
Lat : 15.153205 °N  
Long : 76.896885°E



## History

### 3D Point Cloud



## 03. Krishnanagar Fort

Place - Krishnanagar

District : Ballari  
Taluk : Sandur  
Locality : Krishnanagar

Geo - Coordinates:  
Lat : 15.095385 °N  
Long : 76.556144 °E



### History

The fort is a quadrangular structure with stone curtains some 20 feet high, protected by frequent bastions and terreplein inside and surrounded by a ditch and glacis. Between the walls and glacis runs a deep moat, which was originally about 20 paces in width. The gorges of the eastern and western passes were defended by stone barricades with narrow gateways, and commanded by rude works on the prominent points of the hills. The ridges of the hill were in many places crested by a low wall. The fort had only one gateway as entrance.

3D Point Cloud

**Destroyed**